



Sycamore Close, Mottingham, SE9

£200,000

🛏 1 🚿 1 🚗 1



- Chain Free Sale
- Private Gated Development
- Private Garden
- Quiet Residential Estate
- Easy Reach Of Mottingham Railway Station & Bus Links
- One Bed Ground Floor Maisonette
- Retirement Property - Over 55's Only
- Communal Grounds
- Walking Distance To Mottingham Village Shops & Amenities
- Council Tax Band B - Royal Borough Of Greenwich



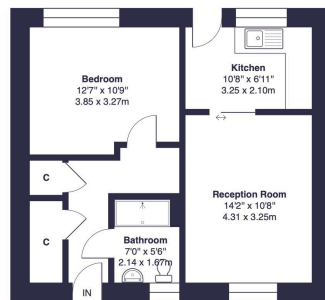
*** CHAIN FREE SALE ***

Situated within a private gated development, this well-presented ground floor one-bedroom retirement property offers comfort, convenience, and peaceful living in a secure setting. Lease Length Years 58 Years | Service Charge £2000.00 Per Annum | Ground Rent £100.00 Per Annum (approx.)



Sycamore Close, SE9

Approximate Gross Internal Area = 513 sq ft / 47.7 sq m



Ground Floor



This floor plan was produced using RICS measurements standards 2nd edition.
For layout guidance only and not drawn to scale unless stated. Window and door openings are approximate.
Whilst every care is taken in the preparation of this plan, we would advise interested parties to check all dimensions, shapes and compass bearings prior to making any decisions reliant upon them. No liability is accepted for any errors.
By www.primetimesteering.com / Copyright 2020

Cockburn EA

352 Footscray Road,
London, SE9 2EB

t: **020 8859 8590**