



**Connells**

Wickets Way  
Banbury



### Property Description

Connells Estate Agents are delighted to present this spacious three bedroom home located in Bodicote, within the sought after development "The Pavillions"

Accommodation comprises; entrance hall, cloakroom, spacious lounge and generous sized kitchen diner with direct access to the rear garden.

On the first floor; three bedrooms, including two spacious double bedrooms, en suite to master bedroom and family bathroom.

Outside; off street parking for two cars and a private rear garden.

Connells Estate Agents are delighted to present this spacious three bedroom home located in Bodicote, within the sought after development "The Pavillions"

Accommodation comprises; entrance hall, cloakroom, spacious lounge and generous sized kitchen diner with direct access to the rear garden.

On the first floor; three bedrooms, including two spacious double bedrooms, en suite to master bedroom and family bathroom.

Outside; off street parking for two cars and a private rear garden.

Connells Estate Agents are delighted to present this spacious three bedroom home located in Bodicote, within the sought after development "The Pavillions"

Accommodation comprises; entrance hall, cloakroom, spacious lounge and generous sized kitchen diner with direct access to the rear garden.

On the first floor; three bedrooms, including two spacious double bedrooms, en suite to master bedroom and family bathroom.

Outside; off street parking for two cars and a private rear garden.

Connells Estate Agents are delighted to present this spacious three bedroom home located in Bodicote, within the sought after development "The Pavillions"

Accommodation comprises; entrance hall, cloakroom, spacious lounge and generous sized kitchen diner with direct access to the rear garden.

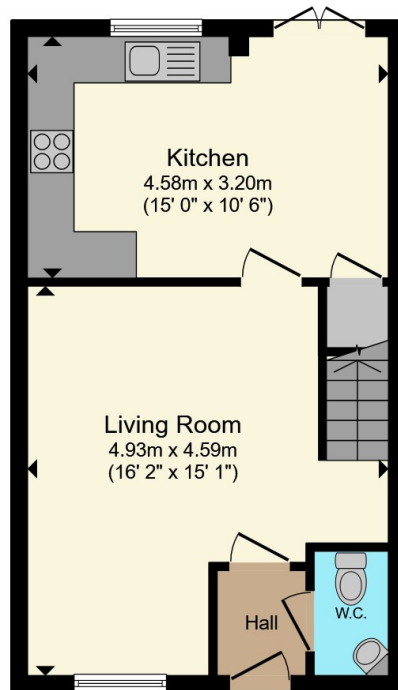
On the first floor; three bedrooms, including two spacious double bedrooms, en suite to master bedroom and family bathroom.

Outside; off street parking for two cars and a private rear garden.

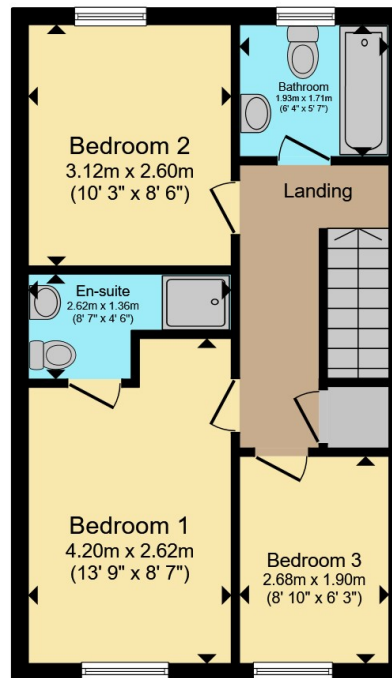








**Ground Floor**



**First Floor**

Total floor area 76.7 m<sup>2</sup> (826 sq.ft.) approx

This floor plan is for illustrative purposes only. It is not drawn to scale. Any measurements, floor areas (including any total floor area), openings and orientation are approximate. No details are guaranteed, they cannot be relied upon for any purpose and they do not form part of any agreement. No liability is taken for any error, omission or misstatement. A party must rely upon its own inspection(s). Powered by www.propertybox.io



To view this property please contact Connells on

**T 01295 268 101**  
**E banbury@connells.co.uk**

33 Bridge Street  
BANBURY OX16 5PN

EPC Rating: B Council Tax  
Band: C

Tenure: Freehold

**view this property online [connells.co.uk/Property/BAN309854](http://connells.co.uk/Property/BAN309854)**



1. MONEY LAUNDERING REGULATIONS Intending purchasers will be asked to produce identification documentation at a later stage and we would ask for your co-operation in order that there will be no delay in agreeing the sale. 2. These particulars do not constitute part or all of an offer or contract. 3. The measurements indicated are supplied for guidance only and as such must be considered incorrect. Potential buyers are advised to recheck measurements before committing to any expense. 4. We have not tested any apparatus, equipment, fixtures, fittings or services and it is in the buyers interest to check the working condition of any appliances.

Connells Residential is registered in England and Wales under company number 1489613, Registered Office is Cumbria House, 16-20 Hockliffe Street, Leighton Buzzard, Bedfordshire, LU7 1GN. VAT Registration Number is 500 2481 05.

**See all our properties at [www.connells.co.uk](http://www.connells.co.uk) | [www.rightmove.co.uk](http://www.rightmove.co.uk) | [www.zoopla.co.uk](http://www.zoopla.co.uk)**

Property Ref: BAN309854 - 0006