



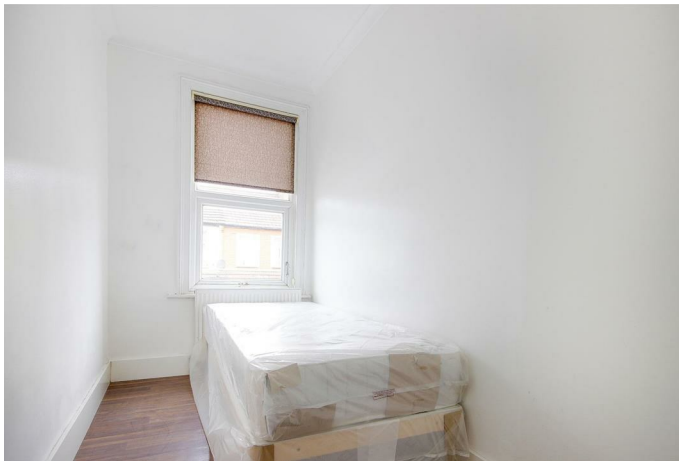
Castles

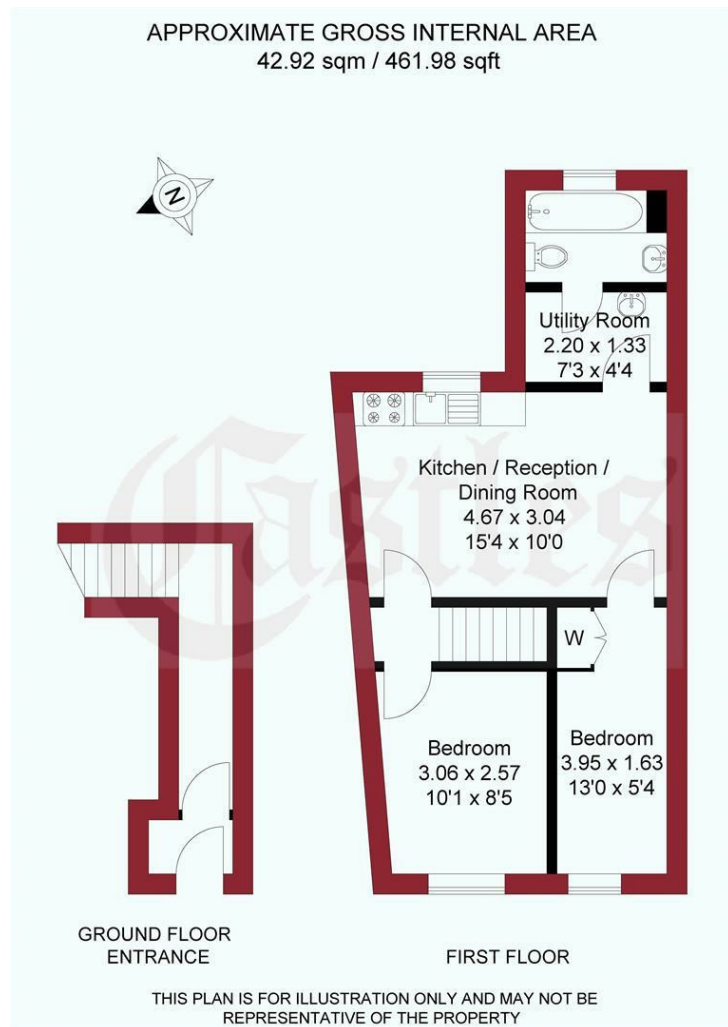
OFFERS IN EXCESS OF
£250,000
Argyle Road
Edmonton, N18 2PW

PROPERTY SUMMARY

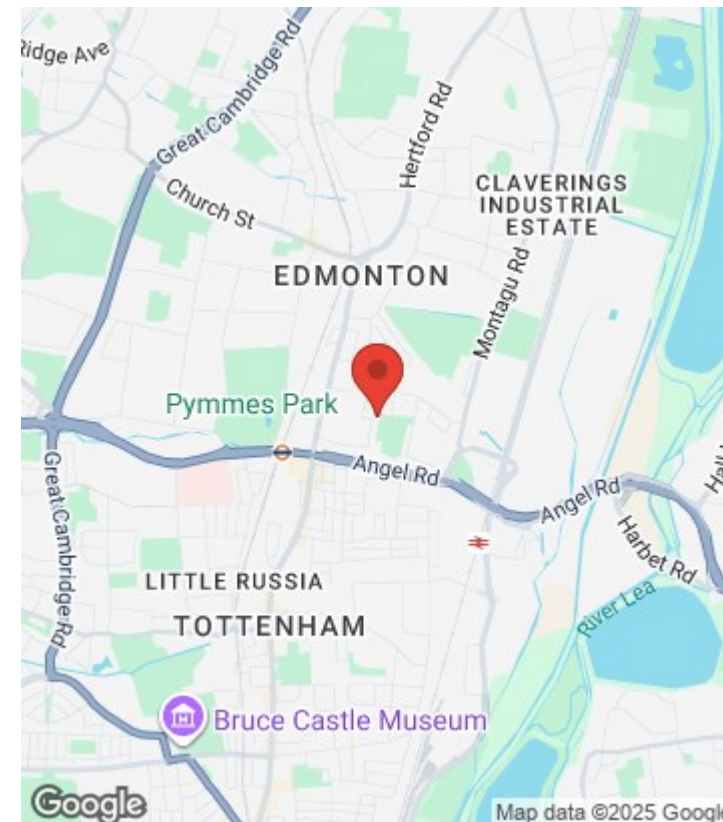
A two bedroom first floor conversion situated within 1/2 mile of Fore Street with its shops and transport links. The property comes with a share of Freehold and Brand new lease to be produced along side the sale. It is also available on a chain free basis.







For a guide to the area
please scan this code for
more information



Flat - First Floor

Share of Freehold

Council:

Council Tax Band: B

Agents Note: Whilst every care has been taken to prepare these particulars, they are for guidance purposes only. All measurements are approximate and are for general guidance purposes only and whilst every care has been taken to ensure their accuracy, they should not be relied upon and potential buyers/tenants are advised to recheck the measurements



OFFICE ADDRESS

438 Hertford Road
Edmonton
London
N9 8AB

OFFICE DETAILS

020 8804 8123
edmonton@castles.london
<https://www.castles.london/>

Energy Efficiency Rating		Current	Potential
Very energy efficient - lower running costs			
(92-100) A			
(81-91) B			
(69-80) C			
(55-68) D			
(39-54) E			
(21-38) F			
(1-20) G			
Not energy efficient - higher running costs			
England & Wales			
EU Directive 2002/91/EC			