



Parkers Way
Tipton

For Sale




Parkers Way
Tipton

4 Bedroom
Semi-Detached House

Parkers Way,
Tipton, DY4

Description

Soul Estates are proud to present this well-presented four-bedroom, three-storey semi-detached family home, ideally located in a quiet cul-de-sac within a highly sought-after part of Tipton. The property is perfectly positioned for families, offering excellent nearby schools, convenient access to local amenities, and strong transport links.

The property welcomes you with a bright entrance hallway giving access to the modern fitted kitchen, guest WC, and a spacious rear lounge overlooking the garden. The family kitchen offers a range of matching wall and base units, splashback tiling, and integrated appliances, including a gas hob and electric oven.

The first-floor landing leads to two generous double bedrooms, a single bedroom, and a large family bathroom, providing ample space for a growing family

The second-floor landing leads off to the master bedroom with an en-suite and dressing area. The property also benefits from gas central heating and double glazing, a large rear garden and a low-maintenance front garden with ample off-road parking and a separate garage.



The finer details



A BEAUTIFULLY PRESENTED SEMI-DETACHED FAMILY HOME



POPULAR MODERN DEVELOPMENT



CUL DE SAC LOCATION



SPACIOUS LOUNGE



FOUR GOOD-SIZED BEDROOMS



MASTER BEDROOM WITH EN-SUITE AND DRESSING ROOM



OFF-ROAD PARKING / GARAGE



CLOSE PROXIMITY TO LOCAL SCHOOLS, SHOPS & AMENITIES

Entrance



WC



Lounge



Kitchen



Landing



Master Bedroom



Master En-Suite



Bedroom 2



Bedroom 3



Bedroom 4



Family Bathroom

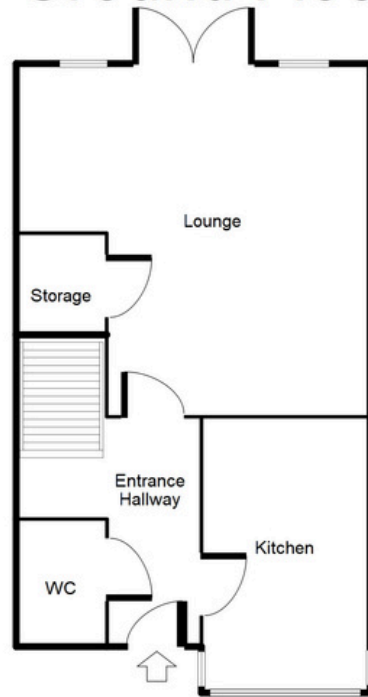


Garden



GROUND FLOORPLAN

Ground Floor



This floorplan is just an example, this is not to scale.
Please see description for exact room sizes.
(c) Soul Estates

KITCHEN:

14' 6" X 7' 11" (4.42M X 2.41M)

LOUNGE:

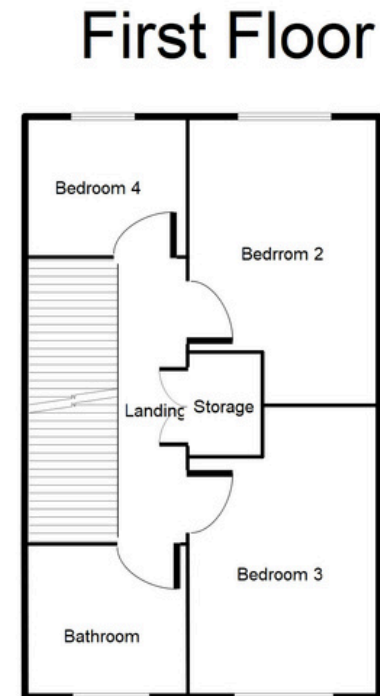
16' 9" X 15' 1" (5.10M X 4.59M)

FIRST FLOOR FLOORPLAN

BEDROOM 2:
14' 5" X 8' 3" (4.39M X 2.51M)

BEDROOM 3:
12' 2" X 8' 3" (3.71M X 2.51M)

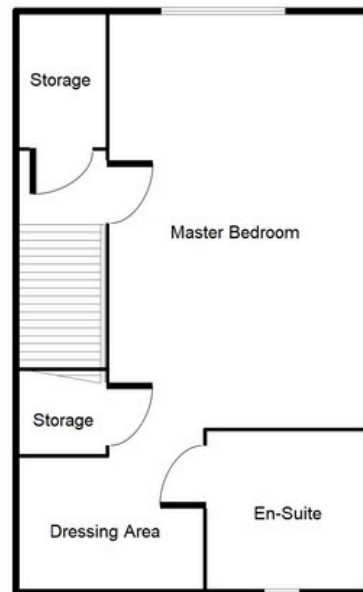
BEDROOM 4:
8' 11" X 6' 7" (2.72M X 2.01M)



This floorplan is just an example, this is not to scale.
Please see description for exact room sizes.
(c) Soul Estates

SECOND FLOORPLAN

Second Floor



This floorplan is just an example, this is not to scale.
Please see description for exact room sizes.
(c) Soul Estates

MASTER BEDROOM:
52' 3" X 10' 0" (15.91M X 3.05M)



Parkers Way

Tipton

CONTACT US

Soul Estates
20 Great Bridge
Tipton
DY4 7HA

0121 647 6779

www.soulestates.co.uk

