



CLAPHAM COMMON SOUTH SIDE, £500,000

Victorian conversion flat
High ceilings and cornicing
Views over Clapham Common
Period features throughout
Chain free
125 year lease

@marshandparsons
marshandparsons.co.uk

MARSH &
PARSONS



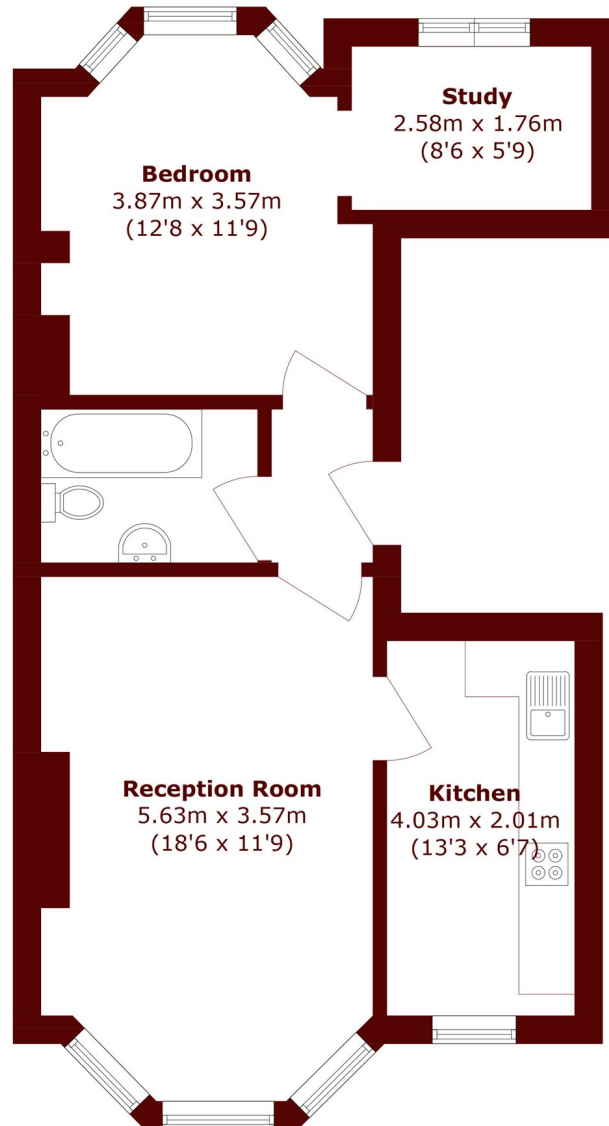
ABOUT THE PROPERTY

A bright and spacious one bedroom flat arranged over the second floor of a handsome Victorian building, boasting high ceilings and attractive period features, with views over Clapham Common. Leasehold and chain free.

This property is being sold with a new 125 year lease. Clapham Common South is a prime location overlooking the Common, making it a rare and highly desirable address. Ideally positioned for Clapham Old Town, Abbeville Village and Clapham South, a wide range of cafés, restaurants and local amenities are within easy reach. Both Clapham Common and Clapham South Underground stations (Northern Line) are nearby.



STEP INSIDE CLAPHAM COMMON SOUTH SIDE



Total area (approx.): 52.2 sq. m (561.8 sq. ft)

Clapham
020 7501 3666

Energy Rating: C We aim to make our particulars both accurate and reliable. However, they are not guaranteed; nor do they form part of an offer or contract. If you require clarification on any points then please contact us, especially if you're traveling some distance to view. Please note that appliances and heating systems have not been tested and therefore no warranties can be given as to their good working order

**MARSH &
PARSONS**