



Turin Street, E2

£450,000

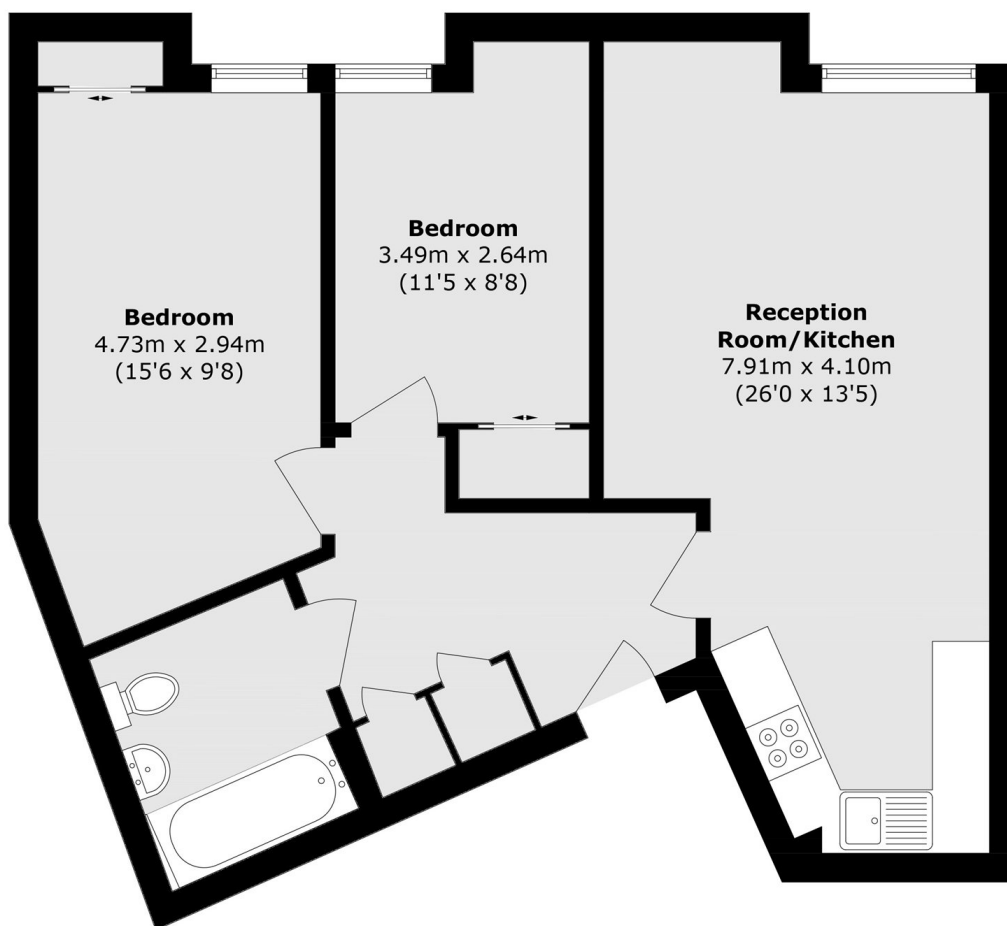
Two bedroom ground floor apartment set in a sought after Bethnal Green location. The apartment has an open plan living room with ample space to dine and two double bedrooms with built-in storage, there is also plenty of further storage in the entrance hall to the apartment. The apartment gets generous natural light from its large windows throughout and is presented in good condition.

In a sought after location, this property is only a short distance from a vast selection of restaurants, bars, cafés and boutiques, as well as the green spaces of Weavers Fields and Spitalfields. Nearby transport links include Shoreditch High Street (Windrush). Bethnal Green (Central) and Old Street (Northern) stations, and multiple bus routes.

Features

- Two bedrooms
- One bathroom
- Private building
- Sought after location
- Great transport links

Turin Street, London, E2



Total area (approx.): 72.7 sq. m (782.5 sq. ft)