



## Warwick Way, SW1V

£2,970 Per week

**Dexters**



## Warwick Way, SW1V

Exceptional Five Bedroom Georgian Family Home in Prime Pimlico

A stunning, fully refurbished Georgian townhouse offering over 2,300 sq ft of beautifully finished living space in one of Central London's most sought-after locations. This elegant residence has been meticulously reimagined throughout, seamlessly combining period charm with contemporary design and high-end fixtures.

The accommodation is arranged over five floors, featuring a grand double reception room on the ground floor perfect for both formal entertaining and everyday family living. The heart of the home is the impressive contemporary kitchen/dining space, fitted to the highest standard and ideal for modern lifestyle living.

There are five generous double bedrooms, including a luxurious principal suite complete with its own dressing room and ensuite bathroom. Three additional contemporary bathrooms and two further wash closets ensure comfort and convenience for family and guests alike. High-quality oak wood flooring flows throughout, adding to the sense of refinement.

### Features

Key features

Fully Refurbished

Five Double Bedrooms

Double Reception Room

Three Modern Bathrooms

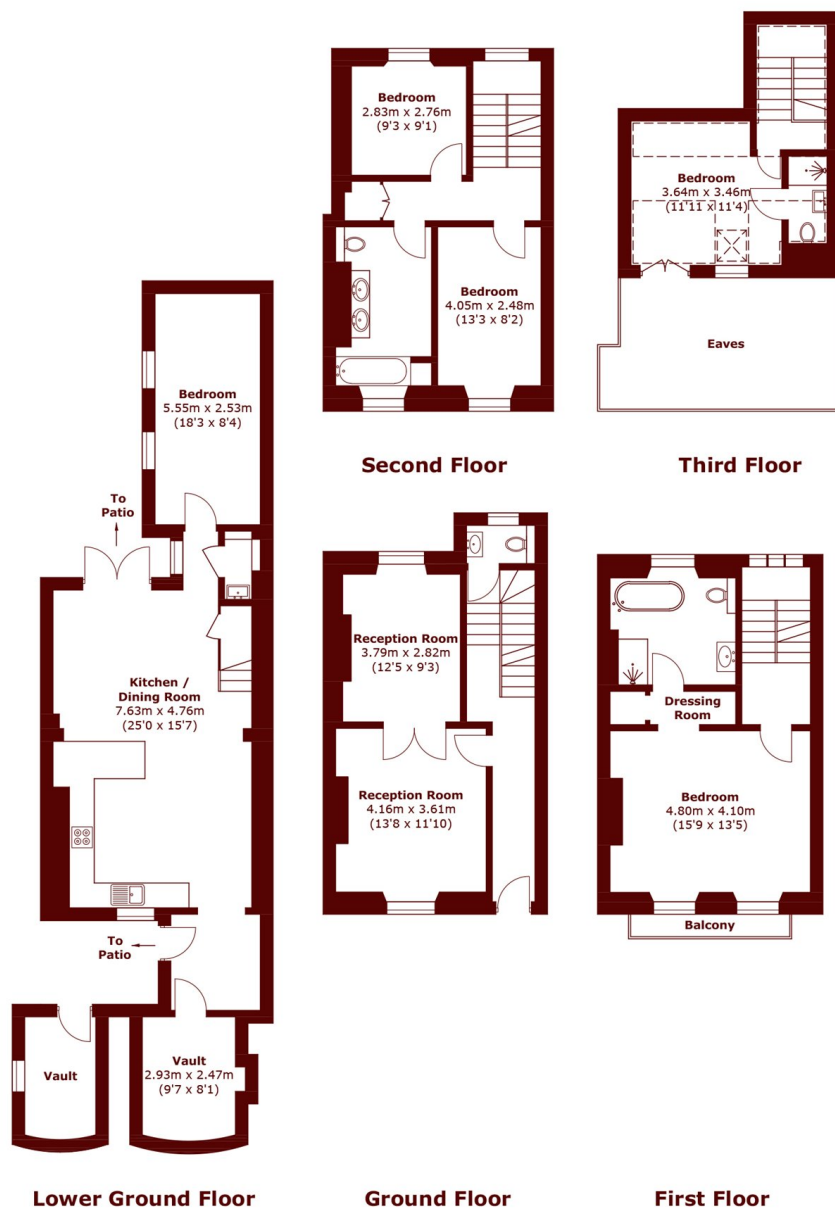
Private Patio







# Warwick Way, London, SW1V



Total area (approx.): 197.7 sq. m (2,128.0 sq. ft)  
 Balcony: 2.0 sq. m (21.5 sq. ft)  
 (Excluding Eaves / External Vault / Including Internal Vault)