



Netherhall Gardens

Hampstead, NW3

£3,000 per month
(£692.31 per week)

A delightful 2 bedroom ground floor apartment with communal gardens in this period conversion in Hampstead. Sole Agent.

CHESTERTONS



Netherhall Gardens

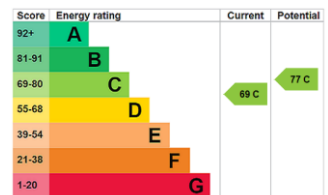
Hampstead, NW3

- A Delightful Ground Floor Apartment
- 2 Bedrooms, 1 Bathroom, Reception, Kitchen
- Communal Gardens
- Situated in Period Conversion in Hampstead



A delightful 2 bedroom ground floor apartment benefiting from communal gardens in this period conversion in Hampstead. The property is walking distance to the shops and amenities of Hampstead Village (Northern Line). Accommodation comprises reception room, kitchen, 2 bedrooms, family bathroom. Sole Agent.

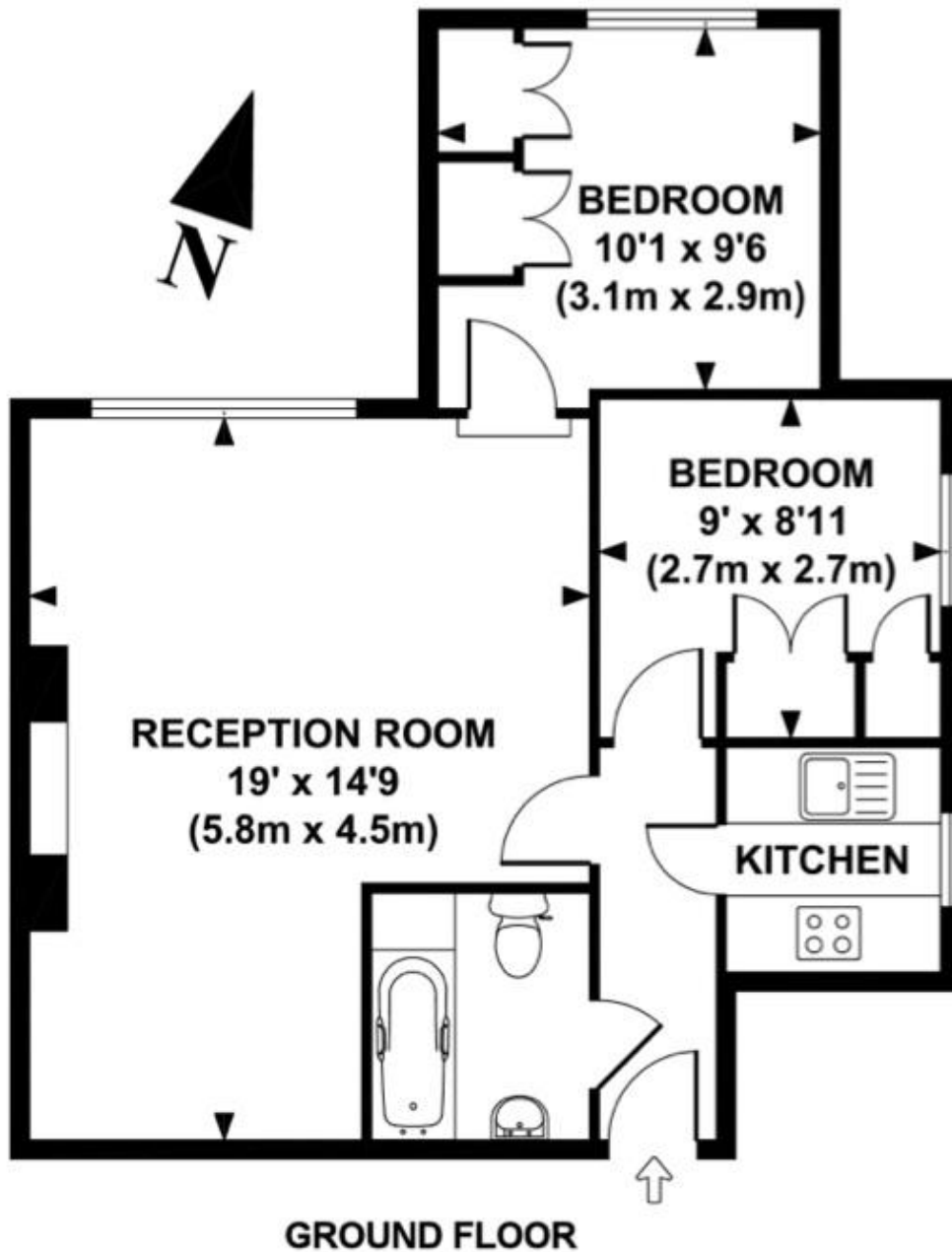
Minimum Term: 12 months
Deposit Required: £3,461.54
Local Authority: London Borough Of Camden
Council Tax Band: D
EPC Rating: C
Furnished



Chestertons Premier Property Management

26 Clifton Road
 London
 W9 1SX
 premier.dept@chestertons.co.uk
 02072985908
 chestertons.co.uk

Additional tenant charges apply (fees apply to non-AST tenancies only)
 Tenancy Agreement Fee: £300
 References per Tenant/Guarantor: £60
 Inventory check (approx. £100 – £250 inc. VAT)
 chestertons.co.uk/property-to-rent/applicable-fees



GROUND FLOOR

APPROX. GROSS INTERNAL FLOOR AREA 531 SQ FT / 50 SQ M

