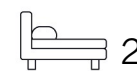




Living  
made  
better

Ballard House  
Greenwich, SE10 9DD



£2,000 PCM

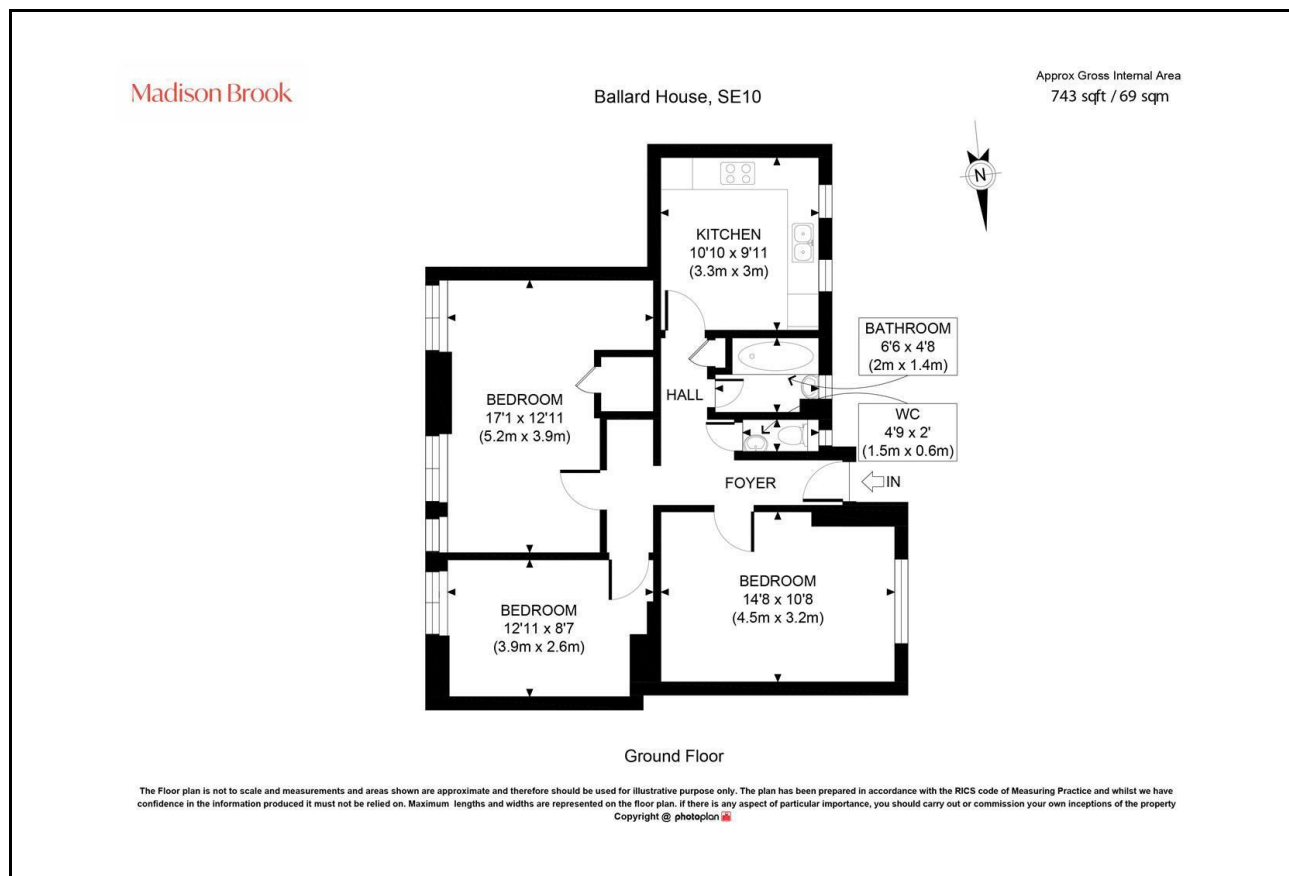
# Ballard House, Greenwich, SE10 9DD

## Property Summary

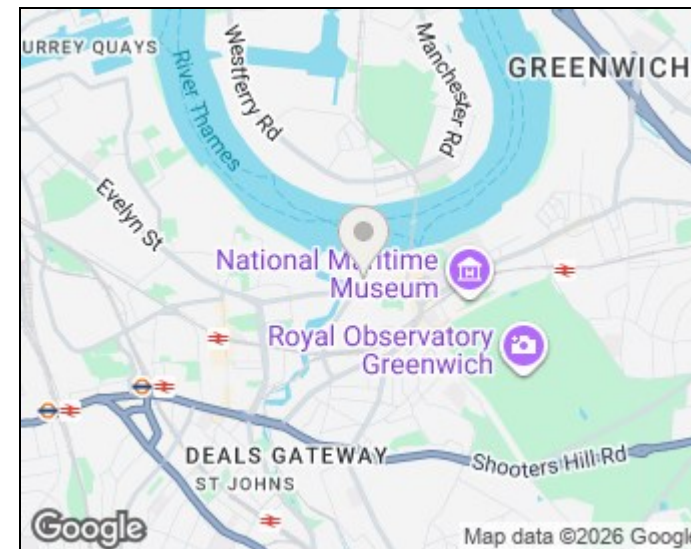
A spacious two-bedroom ground floor apartment in the desirable Ballard House development, ideally located moments from Greenwich town centre, the Cutty Sark and the River Thames. Offering approximately 743 sq. ft. of accommodation, the property comprises a generous living room, separate modern fitted kitchen, two double bedrooms, a contemporary family bathroom and an additional separate WC.

Perfectly positioned within walking distance of Greenwich Market, Greenwich Park, excellent restaurants, cafés and transport links including Cutty Sark DLR, Greenwich Station and Thames Clipper services, providing easy access to Canary Wharf and the City. Available from 26th September 2026.

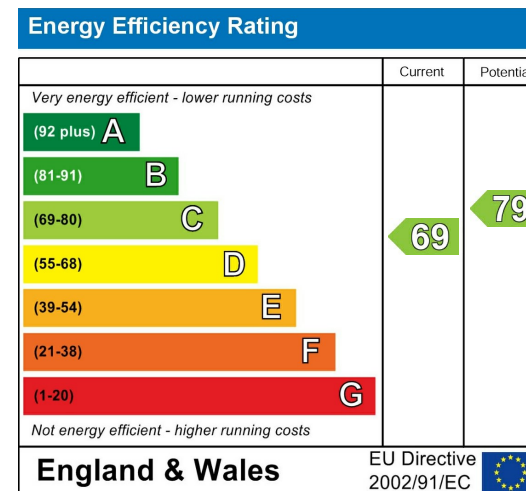
## Floorplan



## Area Map



## Energy Efficiency Graph



43 Loampit Vale, Lewisham, London, SE13 7FT

Tel: 020 3946 6200 Email:

lewisham@madisonbrook.com

https://madisonbrook.com/

These particulars, whilst believed to be accurate are set out as a general outline only for guidance and do not constitute any part of an offer or contract. Intending purchasers should not rely on them as statements of representation of fact, but must satisfy themselves by inspection or otherwise as to their accuracy. No person in this firm's employment has the authority to make or give any representation or warranty in respect of the property.