



LESSINGHAM AVENUE, SW17

£650,000

- Freehold Terrace House
- 2 Double Bedrooms
- Fully Renovated Throughout
- Landscaped Garden
- Excellent Location
- No Onward Chain



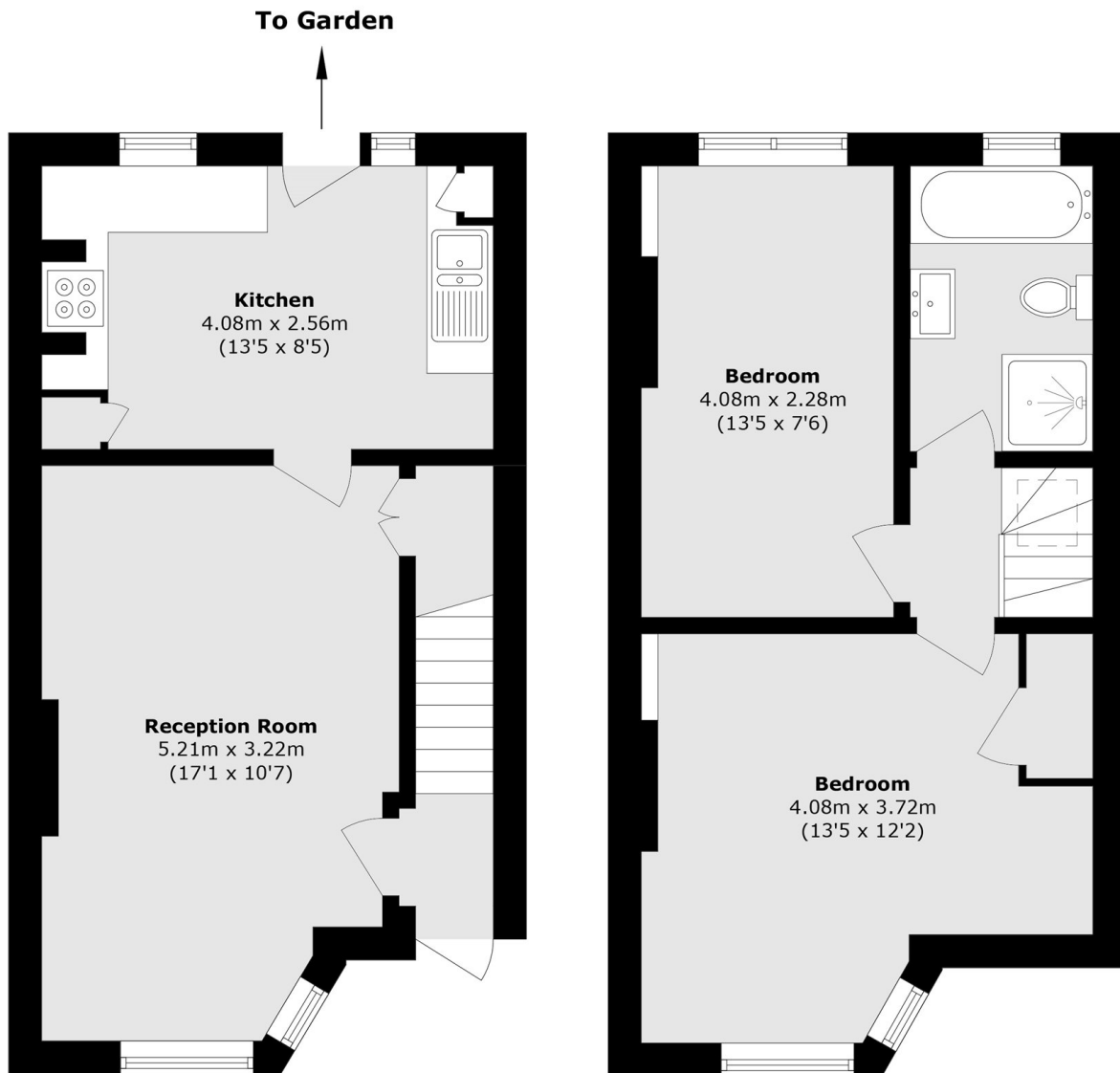


ABOUT THE HOME

A stylishly presented 2 double bedroom terrace house. Located on Lessingham Avenue within the Totterdown Conservation area. Internally the property has benefitted from a complete renovation and a new smart heating system installed by the current owners. The current layout comprises; A large reception room with hardwood flooring and a bay window to offer dining space and under-stair storage area. A modern fully fitted kitchen with ample work counter space and a combination of integrated and free standing appliances. Moving outside to a wonderful landscaped garden with raised paved area and astro turfed lawn, with a mature border. Returning inside to the first floor. You will find 2 very well proportioned double bedrooms for these style houses. A stylish, 4-piece family bathroom with bath and freestanding shower. The property is sold with the additional benefit of being sold with no onward chain. Lessingham Avenue is conveniently located for access to Upper Tooting Road where you will find a fantastic collection of local convenience stores and large chain supermarkets. A fantastic collection of Gastro pubs, Tooting Broadway market and the cafe culture all located at the end of your road.







Ground Floor

First Floor

Total area (approx.): 60.7 sq. m (653.3 sq. ft)

JACKSONS TOOTING

3 Upper Tooting Road, London,
SW17 7TS
Sales: 020 8487 3175
Lettings: 020 8487 3176

Energy Rating: We aim to make our particulars both accurate and reliable. However they are not guaranteed; nor do they form part of an offer or contract. If you require clarification on any points then please contact us, especially if you're traveling some distance to view. Please note that appliances and heating systems have not been tested and therefore no warranties can be given as to their good working order.