



2 Floors



3 Bedrooms



Utility



1 En suite

BYRON THREE BEDROOM HOME

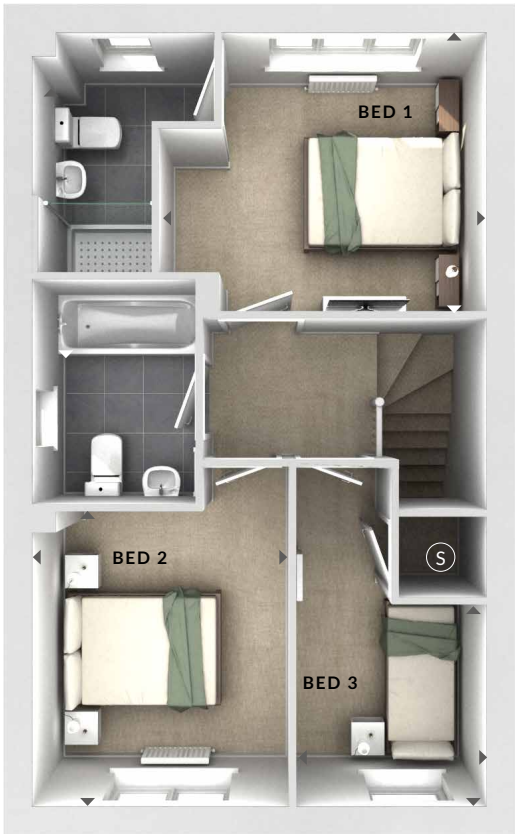
A three bedroom semi-detached home with a spacious lounge and stunning open plan kitchen / dining area with a separate utility and French doors opening onto the garden. Upstairs offers three bedrooms, with the master benefitting from an en suite shower room.

BYRON THREE BEDROOM HOME

⬢ DIMENSIONS

First Floor:

- Bedroom 1
3.46m x 2.93m
11'4" x 9'7"
- En Suite
- Bedroom 2
2.69m x 3.10m
8'10" x 10'2"
- Bedroom 3
1.99m x 2.05m
6'6" x 6'9"
- Bathroom



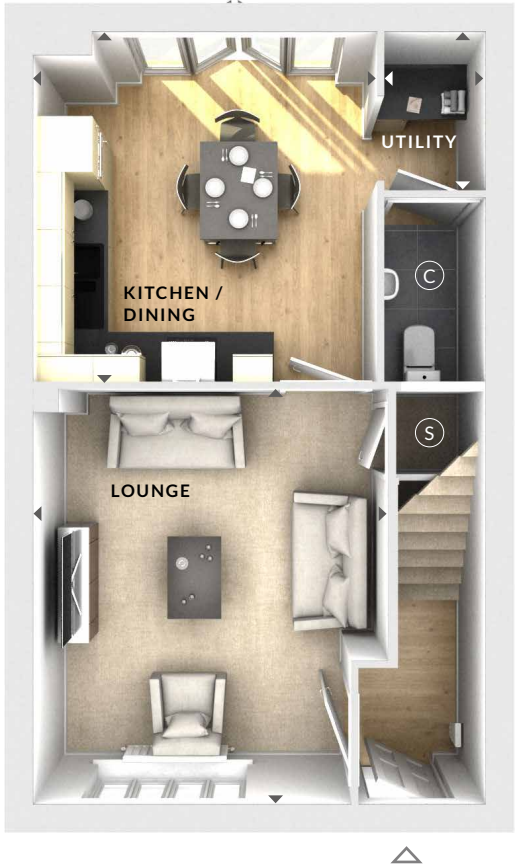
Ground Floor:

- Lounge
3.75m x 4.38m
12'3" x 14'5"
- Kitchen / Dining
3.63m x 3.69m
11'11" x 12'1"
- Utility
1.05m x 1.70m
3'5" x 5'7"

- (S) Storage
- (C) Cloaks

- ◀▶ Measurement Points
- △ External Access

First Floor



Ground Floor