



*jordanfishwick*

Gillbent Road

£1,200 PCM



## Gilbent Road, Cheshire, SK8 6NJ

£1,200 PCM

This spacious two double bedroom ground floor apartment is ideally located for the A34 and offers excellent access to Cheadle Hulme and Bramhall and is only a short drive to Wilmslow, Manchester Airport and the motorway networks.

UNFURNISHED AVAILABLE END JULY - VIEWING RECOMMENDED

Entrance hall with storage, kitchen with electric hob and oven, spacious lounge, two double bedrooms and bathroom with shower over bath.

Communal gardens and parking

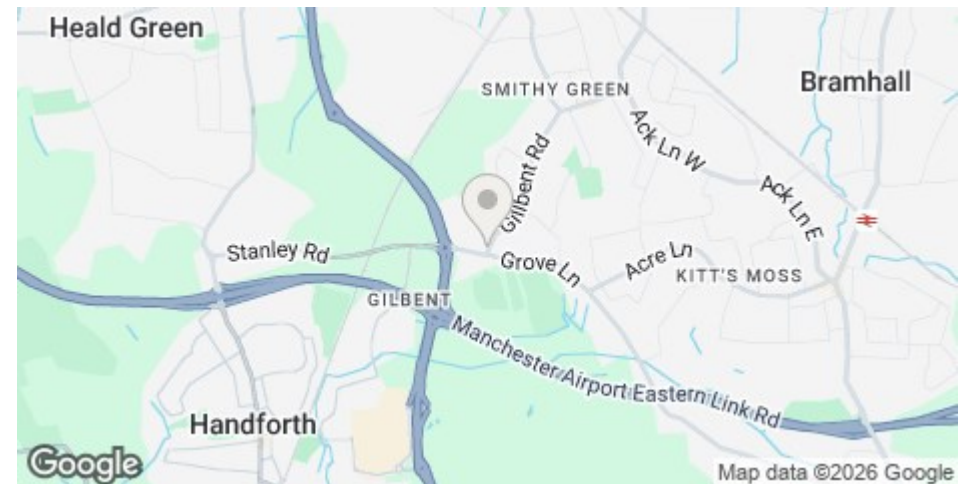
Contact Wilmslow 01625 536300 £1200.00pcm

### LOCATION

Being only a short drive to Handforth Dean and A34 bypass these apartments are set in an ideal location for trips to Wilmslow, Alderley Edge and heading into Manchester. With off road parking and well-maintained interiors these apartments and maisonettes are always a popular choice

### DIRECTIONS

From the A34 bypass heading towards Manchester bear right and come off the A34 onto Stanley Road, at the mini roundabout turn left and the apartments can be found on the left hand side



- GROUND FLOOR
- TWO DOUBLE BEDROOMS
- CLOSE TO A34 AND LOCAL SHOPS
- MODERN KITCHEN AND BATHROOM
- POPULAR LOCATION
- COUNCIL TAX B

Postcode - SK8 6NJ

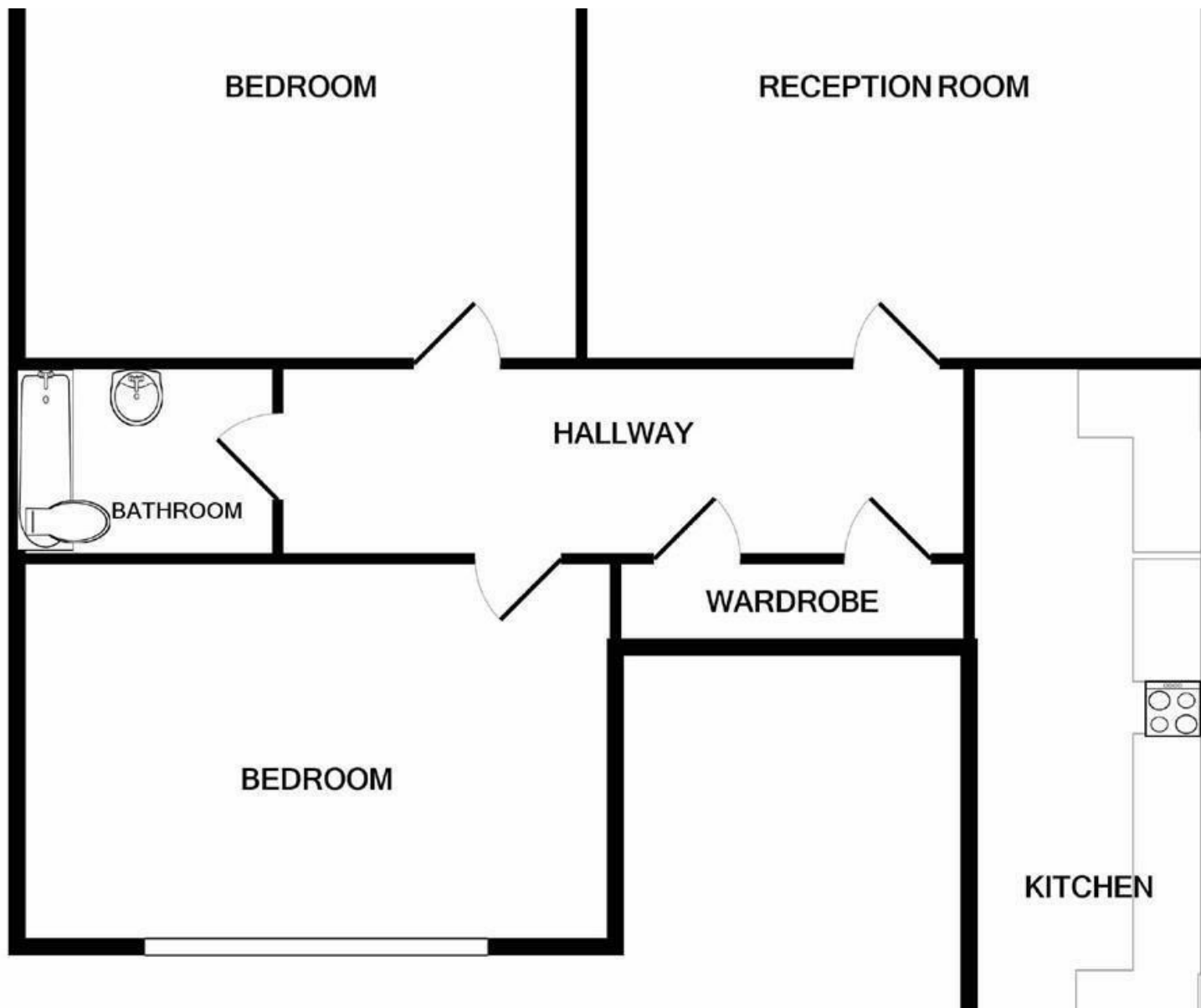
EPC Rating - C

Floor Area - sq ft

Local Authority - Stockport Metropolitan  
Borough Council

Council Tax - B





These particulars are believed to be accurate but they are not guaranteed and do not form a contract. Neither Jordan Fishwick nor the vendor or lessor accept any responsibility in respect of these particulars, which are not intended to be statements or representations of fact and any intending purchaser or lessee must satisfy himself by inspection or otherwise as to the correctness of each of the statements contained in these particulars. Any floorplans on this brochure are for illustrative purposes only and are not necessarily to scale.

Offices at: Offices at Chorlton, Didsbury, Disley, Hale, Glossop, Macclesfield, Manchester Deansgate, Manchester Whitworth Street, New Mills, Sale, Wilmslow and Withington

01625 536300