



Price

£200,000

Leasehold

1x  1x  1x 

**Holmes Park, North
Street, Horsham, West
Sussex, RH12**

OVER 60?

Secure this property
for up to **59% less!**

cubitt & west
Helping you move forwards



Main features

- Great location just a short walk to the town and mainline station
- Convenience of an allocated underground parking space
- Large open plan lounge/kitchen with dining space
- Separate partitioned bedroom area
- At over 470 square feet, this could be an excellent first time buy

Accommodation

FIRST FLOOR

Lounge/Kitchen: 24'5 x 11'9 (7.45m x 3.58m)

Bedroom : 10'11 x 10'8 (3.33m x 3.25m)

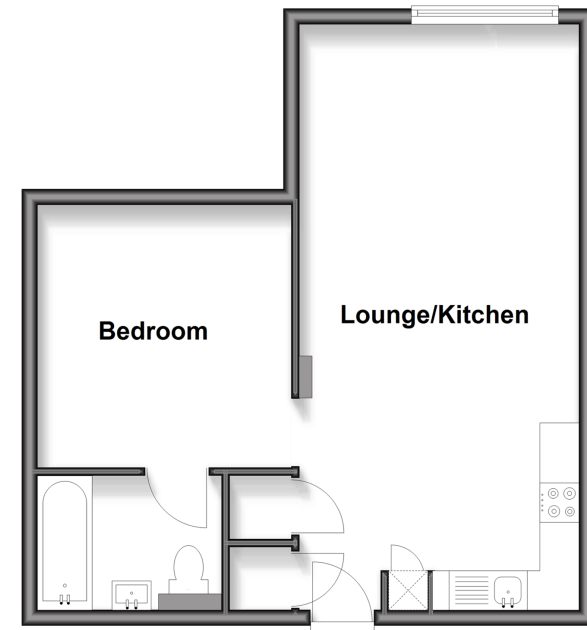
En Suite Shower Room: 7'10 x 5'7 (2.39m x 1.70m)

OUTSIDE

Allocated Parking

First Floor

Approx. 43.9 sq. metres (472.2 sq. feet)



Call Horsham - 01403 269268 ■ cubittandwest.co.uk

■ Legal advice should be taken to verify fixtures/fittings, planning, alterations and/or lease details
 ■ Through a Homewise Home For Life Plan people aged 60+ can secure this property for up to 50% less, by purchasing a Lifetime Lease.

■ Appliances & services are untested, dimensions are approximate and floor plans are not to scale



20918105/20251112/SEH/RSB