

Payton
Jewell
Caines



2 Cunard Row Salem Road, Cwmavon – SA12 9ED
Port Talbot

£99,950

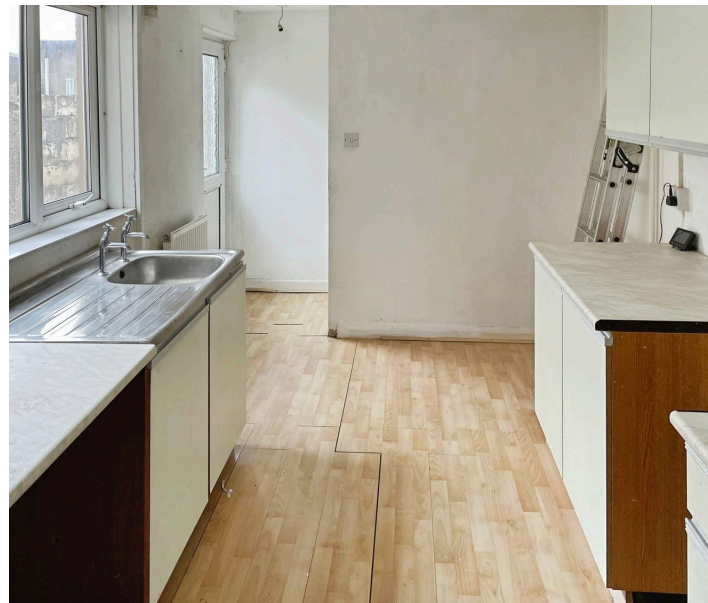


2 Cunard Row Salem Road

Cwmavon, Port Talbot

We are pleased to present for sale with no ongoing chain this two bedroom terrace property situated within the village of Cwmavon and just a short drive away from Port Talbot town centre. The property is ideally located for country/river walks whilst allowing easy access to local amenities, schools and transport links including the nearby M4 corridor and Port Talbot Parkway railway station.

- Two Bedroom Terrace House
- Downstairs Bathroom
- Kitchen
- Lounge
- EPC C





Entrance

Via PVCu opaque glazed door leading into the entrance hall finished with coving, emulsioned walls and laminate flooring. Opaque glazed door leading to lounge.

Lounge

3.00m x 3.82m (9' 10" x 12' 6") Coving, emulsioned walls, opaque double glazed PVCu window overlooking the front of the property, wall mounted feature fire, radiator, meter cupboard and fitted carpet.

Reception Room 2

3.80m x 4.10m (12' 6" x 13' 5") Coving, emulsioned walls, radiator, shelving, feature fireplace, PVCu double glazed window overlooking the rear of the property and laminate flooring. Stairs leading to first floor.

Kitchen

2.42m x 3.66m (7' 11" x 12' 0") PVCu double glazed window overlooking the side of the property, PVCu opaque glazed door to the side, radiator, emulsioned walls and laminate flooring. Stainless steel sink with single drainer. Wall mounted Ideal combination boiler. A range of wall and base units with complementary roll edge work surfaces. Door leading to downstairs bathroom.

Downstairs Bathroom

2.41m x 2.48m (7' 11" x 8' 2") Opaque PVCu double glazed window overlooking the rear and PVCu opaque double glazed window to the side, extractor fan, ceramic tiled walls and radiator. Three piece suite comprising low level WC, pedestal wash hand basin and panelled bath with overhead electric shower attachment. Storage space with shelving. Potential space for a shower cubicle.



First Floor Landing

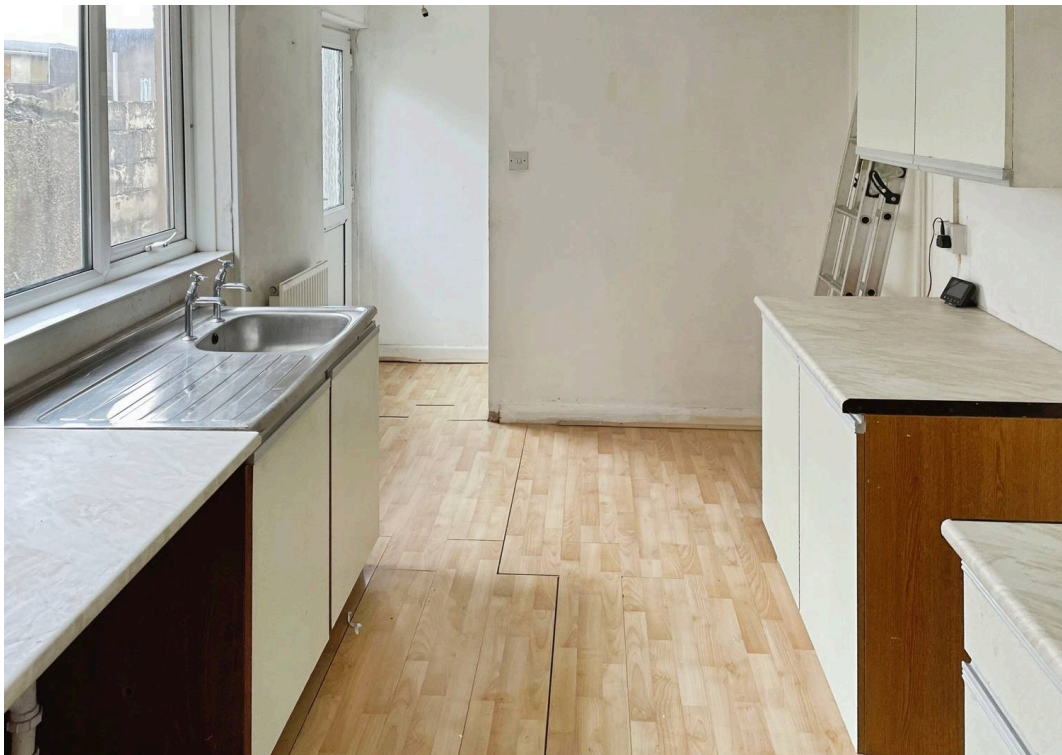
Via stairs. Access to loft. Doors leading to two bedrooms.

Bedroom 1

3.79m x 4.11m (12' 5" x 13' 6") Emulsioned walls, PVCu opaque double glazed window overlooking the front, radiator and wooden flooring.

Bedroom 2

3.20m x 3.73m (10' 6" x 12' 3") Measurement into the wardrobe. Emulsioned walls, a range of fitted wardrobes with sliding doors, shelving, PVCu double glazed window overlooking the rear and radiator.





Payton Jewell Caines

Payton Jewell Caines, 53 Station Road – SA13 1NW

01639891268 • porttalbot@pjchomes.co.uk • pjchomes.co.uk/

We've prepared these property details to give you a helpful overview of the home and its features. Whilst we make every effort to ensure the information is accurate, details, measurements, photographs, and floor plans are intended as a guide only and should not be relied upon as statements of fact. We recommend that all interested parties carry out their own checks and satisfy themselves regarding the property, services, and specifications before making