





A recently redecorated large one bedroom flat on the second and third floor of an attractive redbrick building on Woods Mews benefiting from wooden flooring and access to its own private terrace.

- Private South facing terrace
- Wooden flooring
- Ample storage
- Modern
- Unfurnished

£5,958.33 pcm

Additional tenant charges apply (fees apply to non-AST tenancies only)

Tenancy Agreement Fee: £300

References per Tenant/Guarantor: £60

Inventory check (approx. £100 – £250 inc. VAT)

chestertons.co.uk/property-to-rent/applicable-fees

Energy Efficiency Rating		Current	Potential
95-100	A		
81-94	B		
69-80	C	73	80
55-68	D		
39-54	E		
21-38	F		
1-20	G		

Not energy efficient - higher running costs

EU Directive 2002/91/EC
England, Scotland & Wales

Minimum Term: 12 months
Deposit Required: £8,250.00
Local Authority: City of Westminster
Council Tax Band: G
EPC Rating: C
Unfurnished

Chestertons Mayfair Lettings

47 South Audley Street

Mayfair

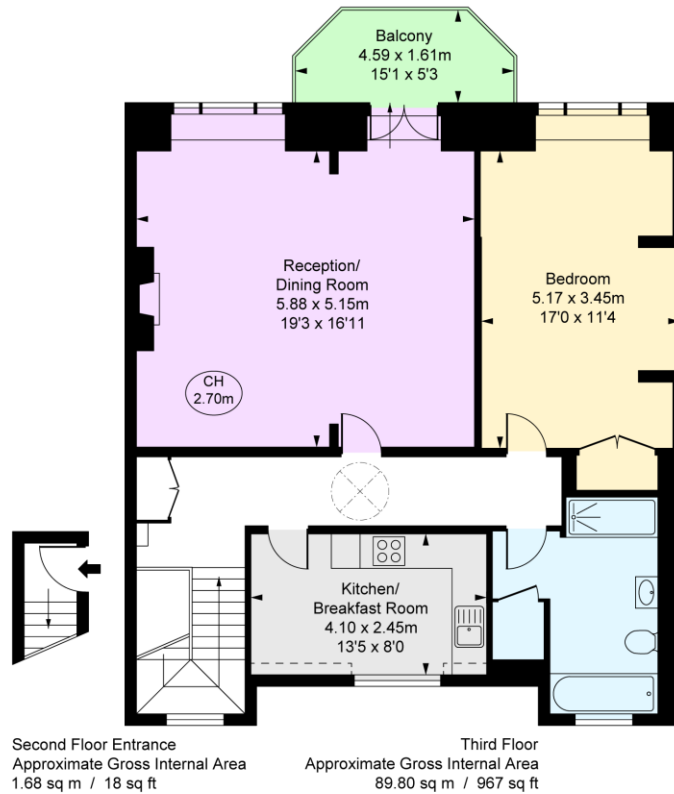
London

W1K 2QA

mayfairlettingsusers@chestertons.co.uk

020 7288 8301

Woods Mews, W1K
 Approximate Gross Internal Area
 91.48 sq m / 985 sq ft
 (Including restricted height
 under 1.5m [-----])
 (CH = Ceiling Heights)



This plan is not to scale. It is for guidance and not for valuation purposes.
 All measurements and areas are approximate only, and have been prepared in accordance with the current edition of the RICS Code of Measuring Practice.
 © Fulham Performance

Chesterton UK Services Limited trading as Chestertons for themselves and for the vendor of this property whose agents they are, give notice that (i) these particulars do not constitute any part of an offer or contract, (ii) all statements contained within these particulars are made without responsibility on the part of Chestertons or the vendor, (iii) whilst made in good faith, none of the statements contained within these particulars are to be relied upon as a statement or representation of fact, (iv) any intending purchasers must satisfy themselves by inspection or otherwise as to the correctness of each of the statements contained within these particulars, (v) the vendor does not make or give either Chestertons or any person in their employment any authority to make or give representation or warranty whatsoever in relation to this property. Wide angle lenses may be used. ©Copyright Chestertons | Chesterton Global Ltd | Registered Office 5th Floor, The Lantern, 75 Hampstead Road, London, NW1 2PL Registered Company Number 05334580.



This paper is
100% recyclable