



**Price**  
**£300,000**

**Freehold**

3x  1x  1x 

**Old Tovil Road,  
Maidstone, Kent ME15**

**OVER 60?**

Secure this property  
for up to **59% less!**

*Wards*  
Helping you move forwards





## Main features

- Chain free house
- Generously sized rooms with ample natural light
- Large rear garden, perfect for entertaining
- Potential to extend (subject to planning permission)
- Walking distance to local schools, shops and mainline stations

## Accommodation

### GROUND FLOOR

Entrance Porch  
Hallway  
Lounge: 15'9 x 10'7 (4.80m x 3.23m)  
Dining Area: 13'5 x 10'8 (4.09m x 3.25m)  
Kitchen: 14'8 x 9'7 (4.47m x 2.92m)

### FIRST FLOOR

Landing  
Bedroom 1: 14'1 x 13'4 (4.30m x 4.07m)  
Bedroom 2: 11'1 x 9'2 (3.38m x 2.80m)  
Bedroom 3: 8'2 x 7'7 (2.49m x 2.31m)  
Bathroom

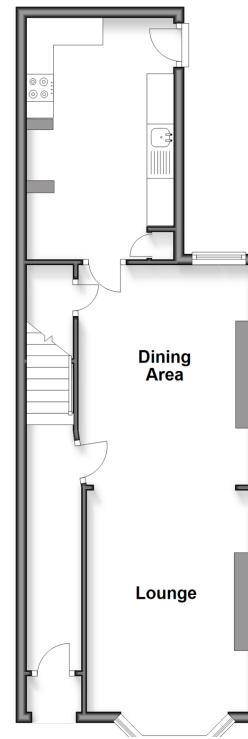
### SECOND FLOOR

Landing  
Loft Room: 14'1 x 9'7 (4.30m x 2.92m)

### OUTSIDE

Rear Garden  
Front Garden

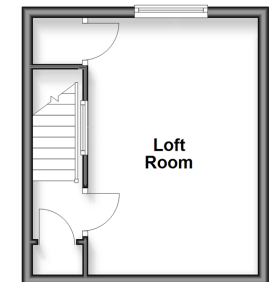
**Ground Floor**  
Approx. 47.1 sq. metres (507.5 sq. feet)



**First Floor**  
Approx. 46.9 sq. metres (504.7 sq. feet)



**Second Floor**  
Approx. 19.8 sq. metres (213.0 sq. feet)



**Call Maidstone - 01622 683737 ■ [wardsofkent.co.uk](http://wardsofkent.co.uk)**

■ Legal advice should be taken to verify fixtures/fittings, planning, alterations and/or lease details  
■ Through a Homewise Home For Life Plan people aged 60+ can secure this property for up to 50% less, by purchasing a Lifetime Lease.

■ Appliances & services are untested, dimensions are approximate and floor plans are not to scale



13159054/20250827/TB/TB