

Property ref: 177833

## Chesterman Street, Reading, RG1 2PR

£1,600 PCM

**HASLAM'S**  
Lettings



A beautifully presented two-bedroom Victorian terraced home situated in the heart of Reading. This property on Chesterman Street offers comfortable and convenient living within easy reach of Reading town centre, Reading Station, and excellent local amenities. The accommodation comprises bright and spacious living areas, a modern fitted kitchen, well-proportioned bedrooms, and a contemporary bathroom, as well as a separate utility room making it ideal for couples, or a small family. The property further benefits from gas central heating, double glazing, and a private rear garden.  
Reading Borough Council tax band B.

**Available 13/07/2026**

- Stunning two bedroom mid-terrace home
- Two reception rooms; Gas central heating
- Fitted kitchen with appliances
- South facing garden; Utility room
- Permit parking; Unfurnished
- EPC rating C; Managed by HASLAM'S

\*Fees For Assured Shorthold Tenancies: when you rent a property from us you will be required to pay a sum equivalent to one weeks' rent for a holding deposit. Upon successful application, this amount will be off set against your first months' rent. You will also be required to pay a security deposit equivalent to 5 weeks' rent which will be held and protected in line with Deposit legislation. For more information about our fees please visit: [www.haslams.net](http://www.haslams.net)  
Fees for all other tenancies (Non Housing Act Tenancies / Company Lets): when you rent a property from us we will charge you a one-off fee per property. This charge is the equivalent of 15 days of the monthly rental charge (+VAT) with a minimum fee of £450 (inc.VAT) up to a maximum of £650 (inc.VAT). Other fees may apply depending on your circumstances.

**0118 960 1055**

**[lettings@haslams.net](mailto:lettings@haslams.net) [www.haslams.net](http://www.haslams.net)**

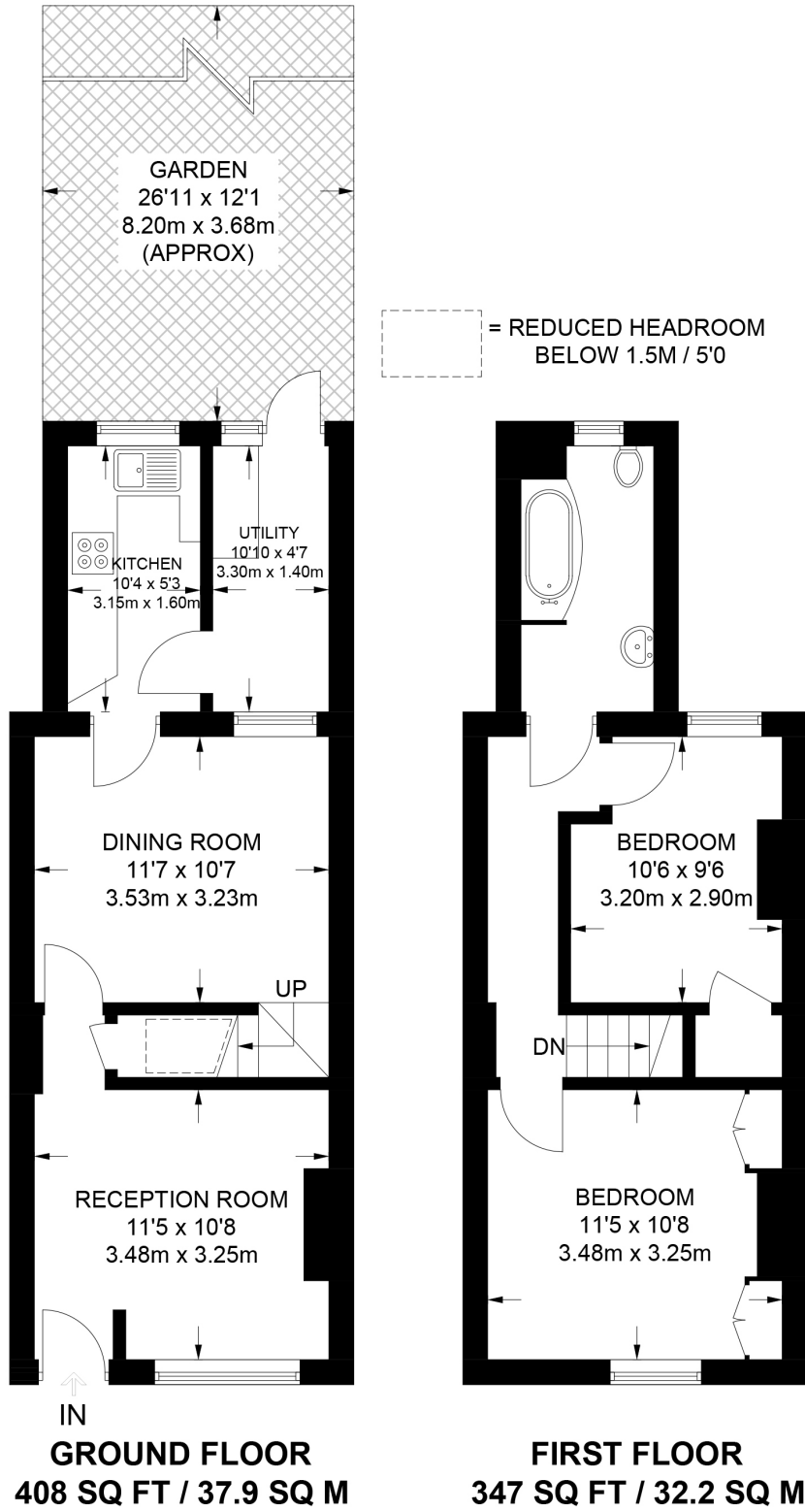
**Haslams Estate Agents Ltd, 159 Friar Street, Reading, Berkshire, RG1 1HE**

Broadband/Mobile Info: Connections available. For an indication of specific speeds and supply of Broadband and Mobile, we advise applicants go to the Ofcom website Broadband and Mobile Coverage Checker.









This plan has been drawn for illustrative and identification purposes only.