



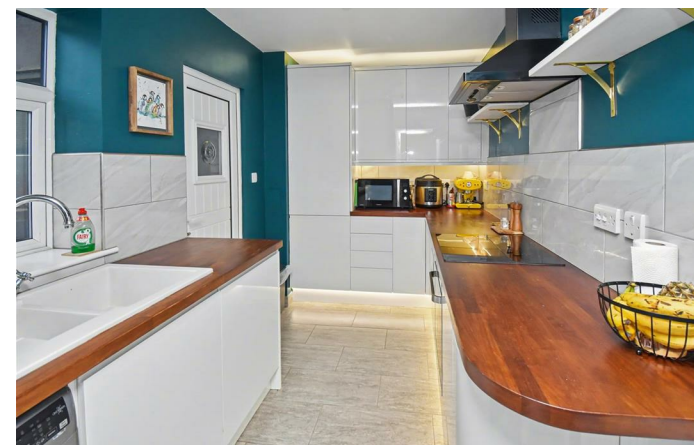
33 East Crescent

Weldon, Northamptonshire NN17 3JW



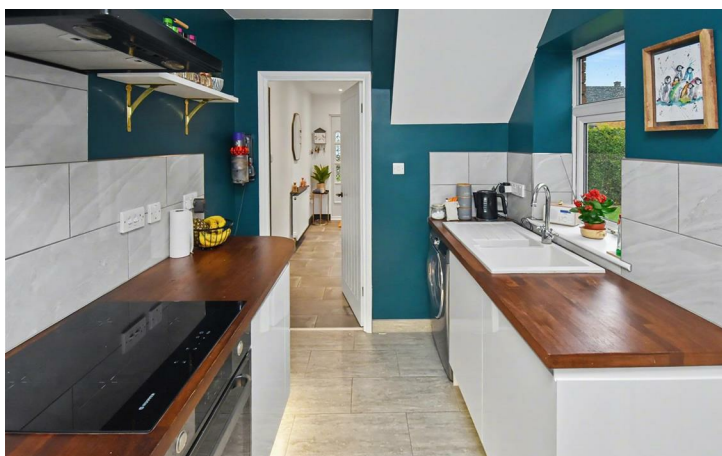
Simpson West

Being situated within the highly sought after village of Weldon is this rarely available, semi-detached which occupies a large corner plot. Being perfectly situated within close distance to local schools, shops, and amenities the property would make an ideal family home. The beautifully presented accommodation comprises of a spacious reception hall, cloakroom/WC, living/dining room, a superb re-fitted kitchen with integrated appliances, and a large storage room. The first floor provides THREE BEDROOMS and a refitted family bathroom. Outside, there is a smart block paved driveway which provides OFF ROAD PARKING for two vehicles and is complimented by a large lawned garden which continues to one side. The rear garden is predominately laid to lawn and benefits from a separate gravelled patio area. Energy rating C. Council Tax Band A.

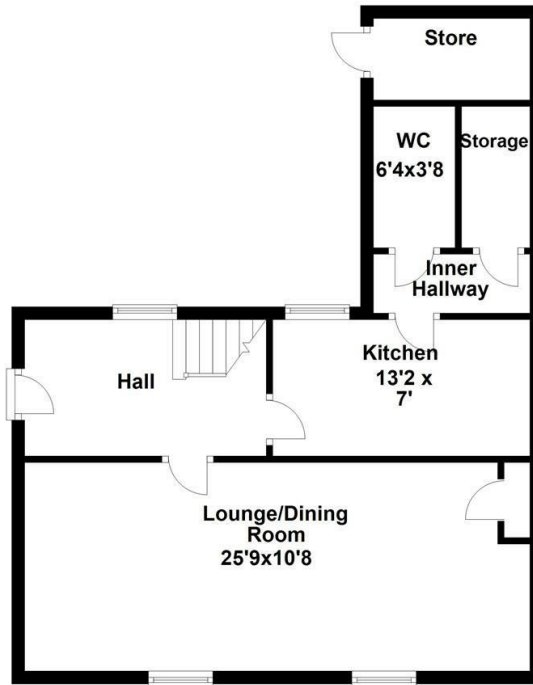


£310,000

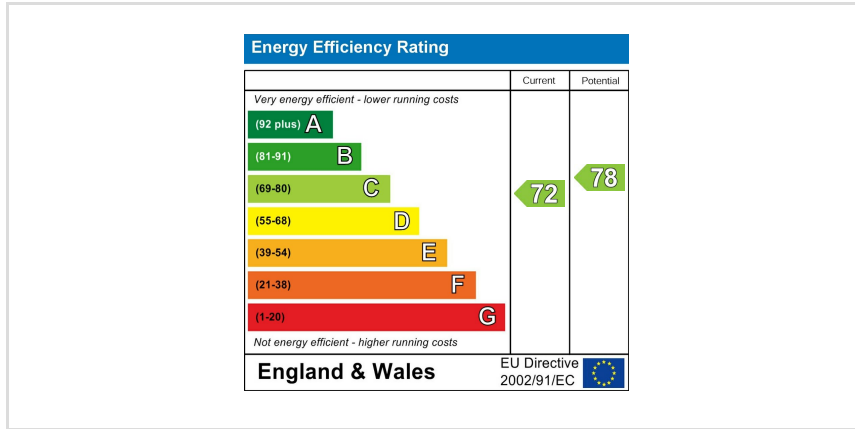
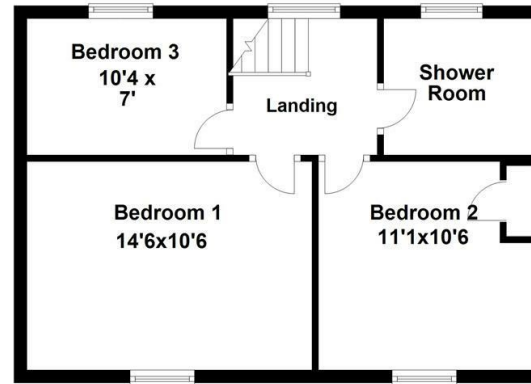
3 1 1



Ground Floor



First Floor



When you buy with Simpson West, you know **you'll be in safe hands**. From the moment you walk through our doors, we'll make you **feel truly welcome**. Our sales consultants and financial advisors will take you through **every step of the process**, offering **free expert advice** along the way, from help choosing the right mortgage and insurance through to finding your conveyancer. And if you need help selling your home too, **with over 20 years of local experience, you can trust us to get you moving**.



**Simpson
West**

Making Every
Journey Personal



01536 202007

info@simpsonwest.co.uk

<https://www.simpsonwest.co.uk/>

64 Corporation Street, Corby, Northants, NN17 1NH