



TO LET



14 Beechfield Drive, Devizes, SN10 2SW

£900 Per Month



- Ground Floor Flat
- Electric Heating
- Parking
- Two Bedrooms
- Double Glazing

#### Life in Devizes – Historic Charm Meets Modern Convenience

Located in the heart of Wiltshire, Devizes is a thriving market town known for its rich history, welcoming community and excellent local amenities. With its blend of period architecture, independent shops, and vibrant weekly markets, Devizes offers a lifestyle that combines traditional charm with modern-day convenience.

Residents enjoy a wide range of facilities including supermarkets, coffee shops, pubs, restaurants, and a bustling town centre filled with independent retailers. The Devizes Leisure Centre, local parks and Caen Hill Locks on the Kennet & Avon Canal provide plenty of opportunities for outdoor recreation and picturesque walks.

The town is home to several well-regarded primary and secondary schools, along with health services such as GP surgeries, dental practices and pharmacies. For wider healthcare needs, larger hospitals in Bath and Swindon are easily

## THE PROPERTY

Welcome to Beechfield Drive, Devizes. A very well presented two bedroom ground floor apartment.

The accommodation comprises entrance hall, lounge/diner, kitchen, shower room and two bedrooms.

The property further benefits from parking, double glazing and modern electric heating.

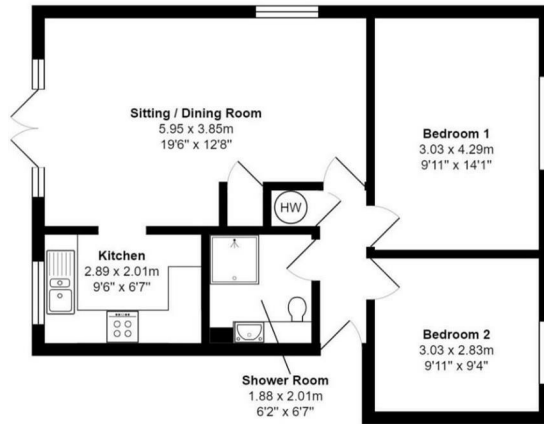
The landlord would prefer a longer term let.

Viewing day - Tuesday 7th July. Please contact us for an appointment.

### Beechfield Drive, Devizes, SN10 2SW

Total Area: 58.9 m<sup>2</sup> ... 634 ft<sup>2</sup>

All measurements are approximate and for display purposes only



## Directions

Office 4 Stockley Farm, Stockley, Wiltshire, SN11 0NT

Tel: 01225 839050 Email: [hello@blueleafproperty.co.uk](mailto:hello@blueleafproperty.co.uk) <https://www.blueleafproperty.co.uk>

## SITUATION