



Guide Price
£300,000

Freehold

3x  1x  2x 

**River Street, Dover,
Kent, CT17**

OVER 60?

Secure this property
for up to **59% less!**

Wards
Helping you move forwards



Main features

- Beautiful rear garden backing onto the River Dour
- Ready to mark with your own stamp
- No onward chain complications
- Sought after River location close to the local Co-Op and Kearsney Abbey
- Excellent transport links with A2/M2 and Kearsney mainline railway station

Accommodation

GROUND FLOOR

Porch
Hallway
Lounge : 14'11 x 13'7 (4.55m x 4.14m)
Dining Area : 9'9 x 9'9 (2.97m x 2.97m)
Kitchen: 8'11 x 8'2 (2.72m x 2.49m)

FIRST FLOOR

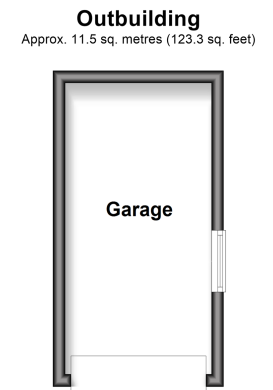
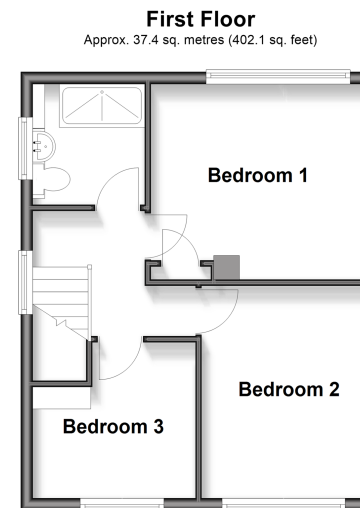
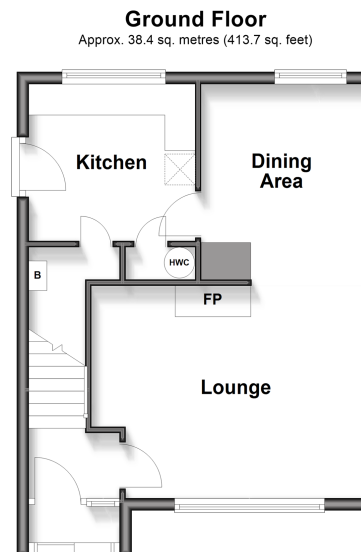
Landing
Bedroom 1: 12'0 x 9'5 (3.66m x 2.87m)
Bedroom 2: 11'8 x 9'1 (3.56m x 2.77m)
Bedroom 3: 8'11 x 8'2 (2.72m x 2.49m)
Bathroom

OUTBUILDING

Garage

OUTSIDE

Driveway
Front Garden
Rear Garden



Call Dover - 01304 214876 ■ wardsofKent.co.uk

■ Legal advice should be taken to verify fixtures/fittings, planning, alterations and/or lease details
■ Through a Homewise Home For Life Plan people aged 60+ can secure this property for up to 59% less, by purchasing a Lifetime Lease

■ Appliances & services are untested, dimensions are approximate and floor plans are not to scale