



CALVERT ROAD, SE10

£595,000

Victorian terraced house
Two double bedrooms
Open plan living
Roof terrace
Close to stations
Energy rating: d

@marshandparsons
marshandparsons.co.uk

MARSH &
PARSONS



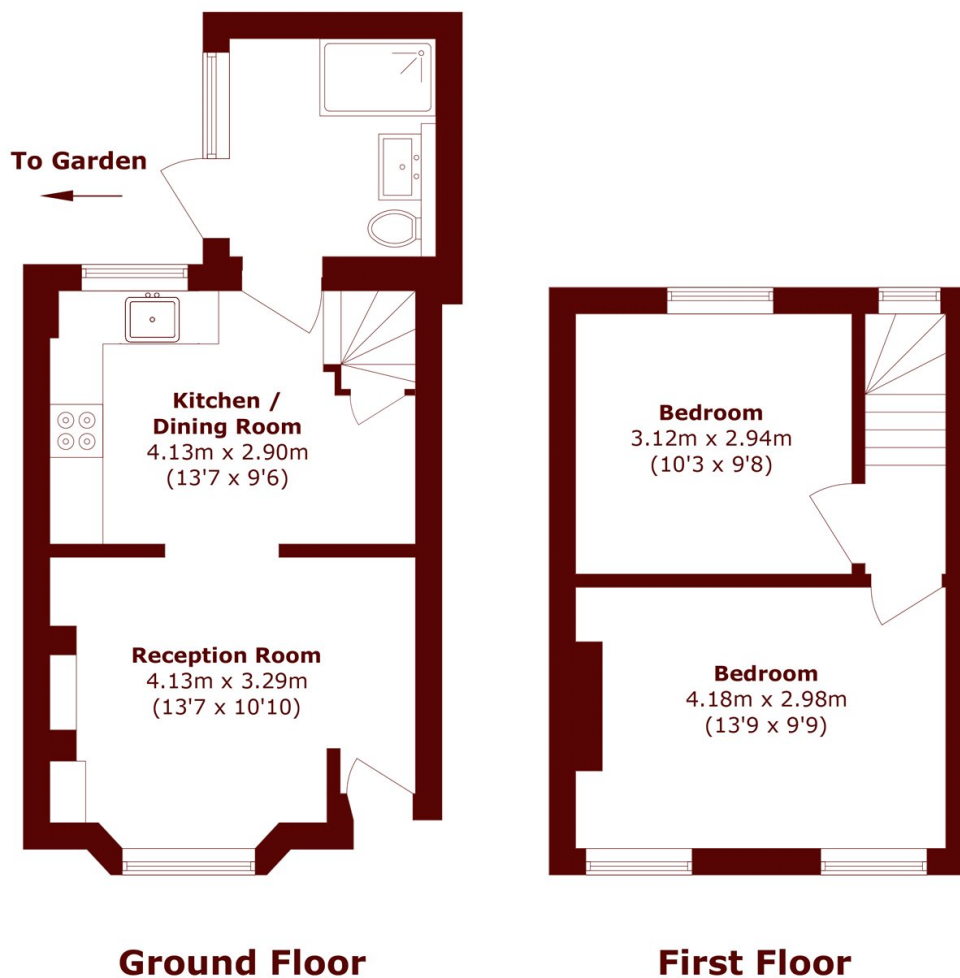
ABOUT THE PROPERTY

Victorian terrace house with a beautiful brick facade and featuring a cosy private courtyard and roof terrace to rear. The interior comprises a recently fitted kitchen, living room and a newly installed, contemporary bathroom. Two double bedrooms and direct access to a versatile loft, ideal for additional storage or as a cosy snug. Further benefits include double glazed windows and newly fitted carpets.

Greenwich Park and the river are both a very short walk away, as well as a wide range of independent coffee shops and local pubs. Maze Hill mainline station, North Greenwich tube station and Greenwich town centre, for DLR are all within easy reach.



STEP INSIDE CALVERT ROAD



Total area (approx.): 56.8 sq. m (611.3 sq. ft)

Greenwich
020 8312 8312

Energy Rating: D We aim to make our particulars both accurate and reliable. However, they are not guaranteed; nor do they form part of an offer or contract. If you require clarification on any points then please contact us, especially if you're traveling some distance to view. Please note that appliances and heating systems have not been tested and therefore no warranties can be given as to their good working order

MARSH &
PARSONS