



Price
£415,000

Freehold

4x  1x  3x 

**Style Close, Parkwood,
Gillingham, Kent, ME8**

OVER 60?

Secure this property
for up to **59% less!**

Wards
Helping you move forwards



Main features

- Well presented and extended family home
- Spacious and flexible accommodation to suit your needs
- Useful downstairs cloakroom
- Garage and driveway
- Central location close to shops and schools

Accommodation

GROUND FLOOR

- Entrance Hall
- Downstairs Cloakroom
- Kitchen: 11'10 x 9'2 (3.61m x 2.80m)
- Play/Family Room : 16'4 x 9'2 (4.98m x 2.80m)
- Lounge/Diner: 24'8 x 10'10 (7.52m x 3.30m)
- Conservatory : 11'9 x 10'6 (3.58m x 3.20m)

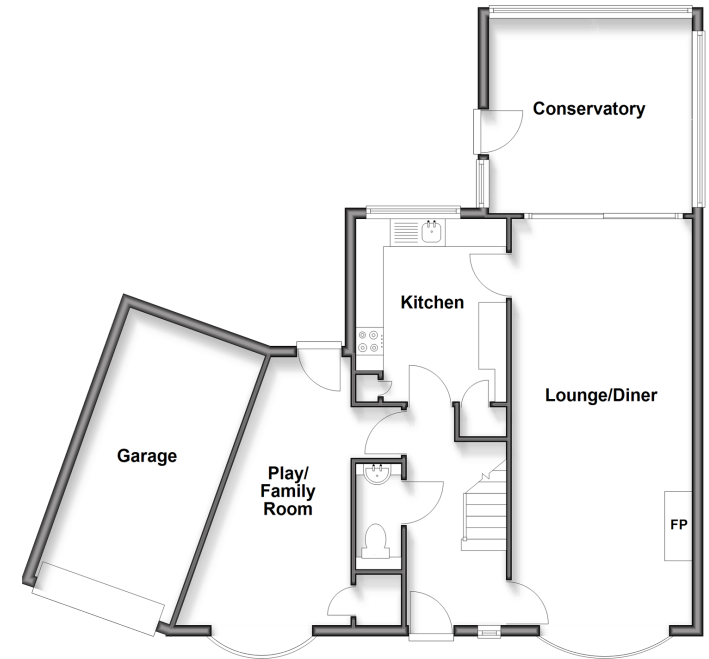
FIRST FLOOR

- Landing
- Bedroom 1 : 13'1 x 10'11 (3.99m x 3.33m)
- Bedroom 2 : 12'9 x 8'7 (3.89m x 2.62m)
- Bedroom 3 : 11'8 x 7'8 (3.56m x 2.34m)
- Bedroom 4 : 8'8 x 6'7 (2.64m x 2.01m)
- Bathroom

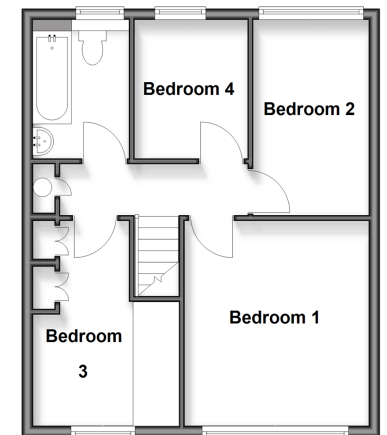
OUTSIDE

- Front Garden
- Rear Garden
- Garage
- Driveway

Ground Floor
Approx. 84.4 sq. metres (908.4 sq. feet)



First Floor
Approx. 44.8 sq. metres (482.2 sq. feet)



Call Rainham - 01634 373531 ■ wardsof Kent.co.uk

- Legal advice should be taken to verify fixtures/fittings, planning, alterations and/or lease details
- Appliances & services are untested, dimensions are approximate and floor plans are not to scale
- Through a Homewise Home For Life Plan people aged 60+ can secure this property for up to 59% less, by purchasing a Lifetime Lease



11339052/20260205/NJ/NJ