



Hasted Drive, Alresford

At home in Hampshire


Hellards

10 Hasted Drive

ALRESFORD, SO24 9PX

Guide Price £430,000

- Three Bedroom End-of-Terrace
- Brand New Kitchen
- Spacious Sitting Room with Double Doors to Garden
- Downstairs Cloakroom
- Refitted Shower Room
- Very Pretty Gardens
- Garage
- Potential to Extend STPP

This spacious and bright end-of-terrace home is offered for sale with no onward chain. Having recently been upgraded with a brand new kitchen and boiler, as well as new windows, the property still has further potential and could be extended (STPP).

The entrance hall leads into the very smart new kitchen, and there is a large, bright sitting/dining room with double doors to the rear garden. There is also a downstairs cloakroom on this level.

Upstairs, two good sized double bedrooms and a single as well as the bathroom - recently refitted with a walk-in shower.

The house is situated at the end of the cul-de-sac in a tucked-away position, and the gardens benefit from a good degree of privacy. Part-walled, the gardens are particularly pretty, with colourful planting, and a pond. To the side, there are vegetable beds and a shed. A lawned front garden with mature shrubs and an apple tree. A garage is located in a separate block close by.





Alresford is a beautiful Georgian town known for its variety of independent shops, restaurants and inns located in stunning surroundings on the edge of the South Downs National Park. Attractions include the Watercress steam railway, schools for infant, junior and secondary education, several churches and an active and inclusive community. The cathedral city of Winchester is about 7 miles away and there is easy access to the south coast, the midlands and London via the road network. There is also mainline rail access to London from both Winchester and Alton. Southampton airport is only about half an hour away by car.

LOCAL AUTHORITY

Winchester City Council
Council Tax Band C

SERVICES

Mains water, electricity and drainage.
Gas fired central heating.

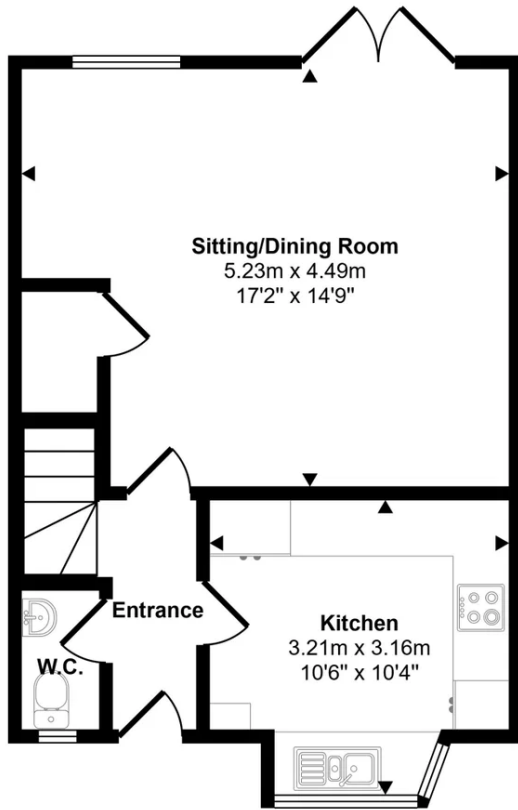
DIRECTIONS

From our office in Broad Street proceed down West Street and at the junction at the bottom of the hill turn left into Jacklyns Lane. Go under the railway bridge, up the hill and down the other side and take the first turn on the left into Linnets Road. Hasted Drive is the second road on the right. The house is at the end of the cul-de-sac on the left hand side of the terrace in front of you.

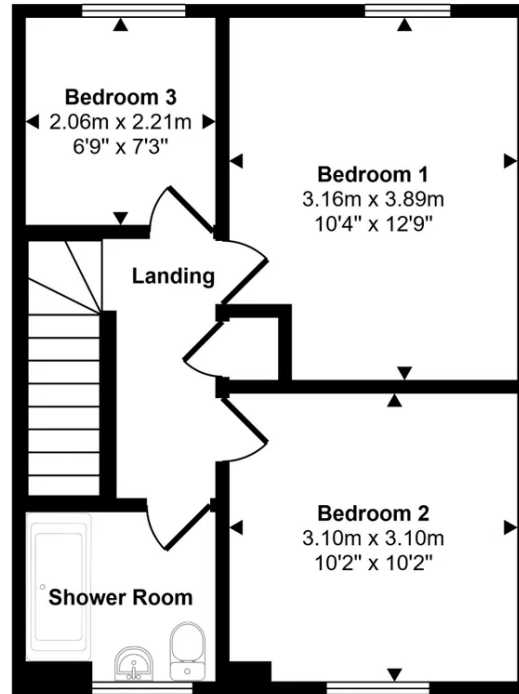
What3words: [///hatter.camped.willpower](https://www.what3words.com/#!/hatter.camped.willpower)



Approx Gross Internal Area
77 sq m / 824 sq ft

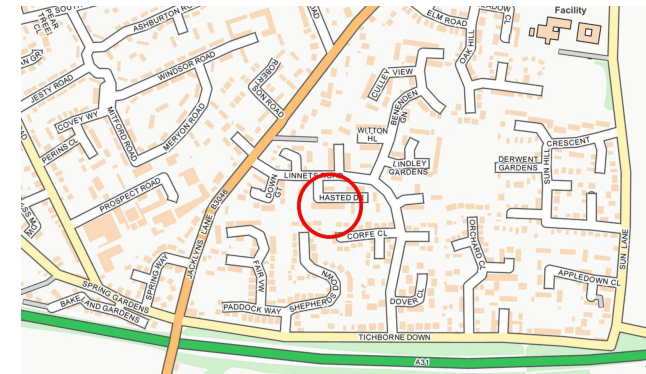
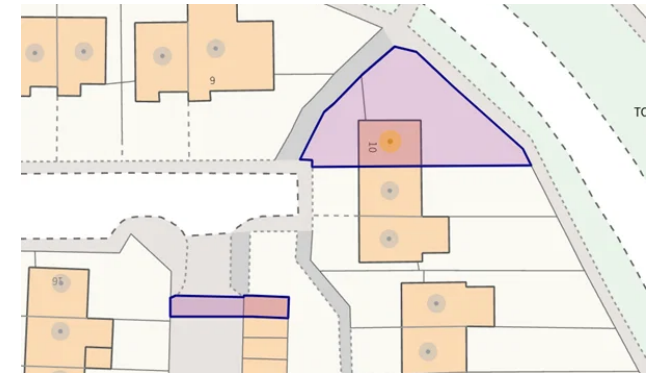


Ground Floor
Approx 39 sq m / 416 sq ft



First Floor
Approx 38 sq m / 409 sq ft

This floorplan is only for illustrative purposes and is not to scale. Measurements of rooms, doors, windows, and any items are approximate and no responsibility is taken for any error, omission or mis-statement. Icons of items such as bathroom suites are representations only and may not look like the real items. Made with Made Snappy 360.



Energy Efficiency Rating		
	Current	Potential
Very energy efficient - lower running costs		
(92 plus) A		
(81-91) B		
(69-80) C	72	83
(55-68) D		
(39-54) E		
(21-38) F		
(1-20) G		
Not energy efficient - higher running costs		
England & Wales	EU Directive 2002/91/EC	

Hellards Estate Agents
11 Broad Street, Alresford, Hampshire

01962 736333

sales@hellards.co.uk

<https://www.hellards.co.uk/>



IMPORTANT: we would like to inform prospective purchasers that these sales particulars have been prepared as a general guide only. A detailed survey has NOT been carried out, nor the services, appliances and fittings tested. Room sizes should not be relied upon for furnishing purposes and are approximate. If floor plans are included, they are for guidance only and illustration purposes only and may not be to scale. If there are any important matters likely to affect your decision to buy, please contact us before viewing the property.