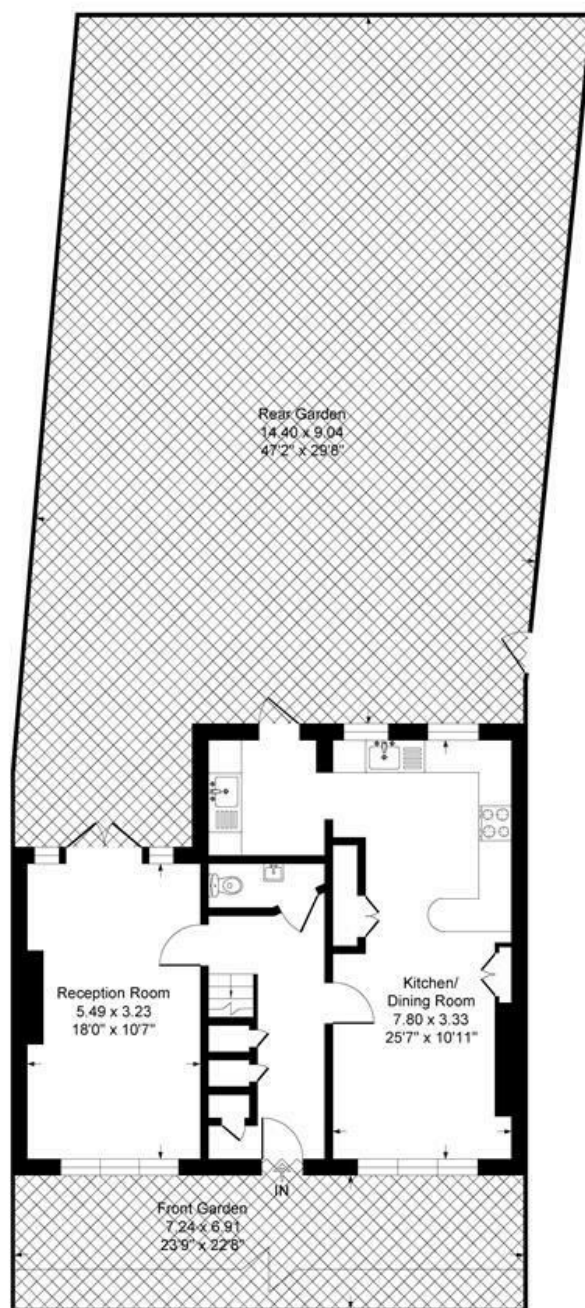
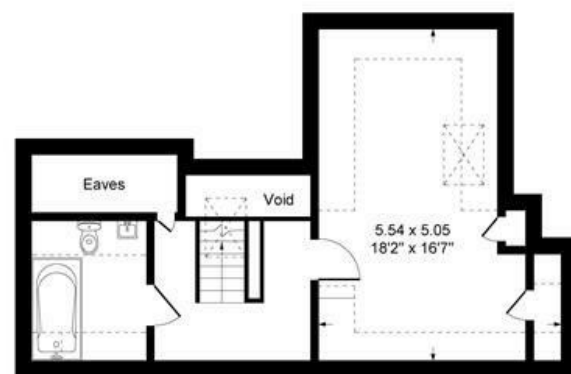


Temple Fortune Lane, London, NW11

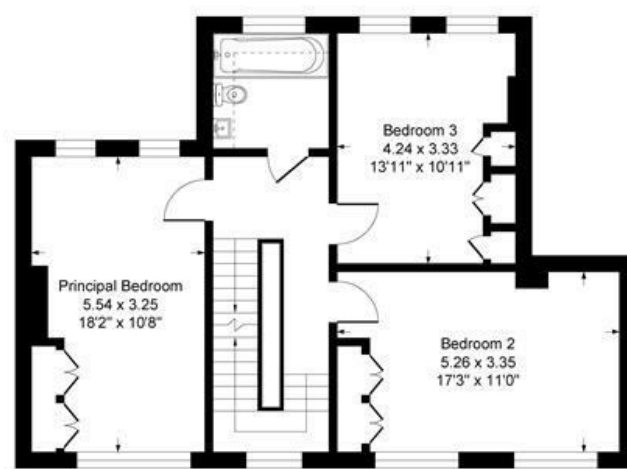
Approximate Gross Internal Floor Area = 164.0 sq m / 1765 sq ft (Including Restricted Height Area)
Approximate Gross Internal Floor Area = 143.0 sq m / 1539 sq ft (Excluding Restricted Height Area)



Ground Floor

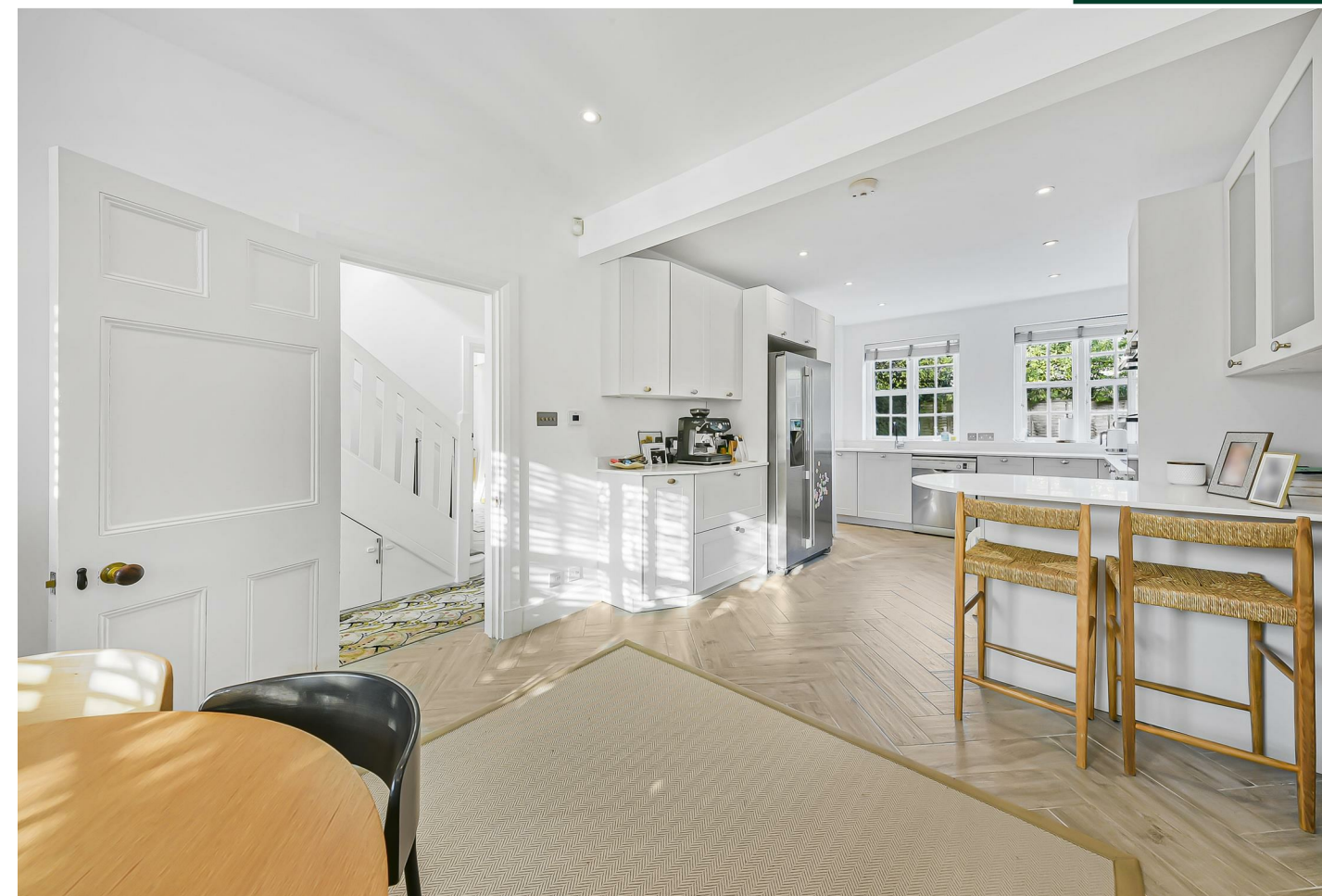


Second Floor



First Floor

Illustration for identification purposes only, measurements are approximate, not to scale.



Temple Fortune Lane, NW11

| 1770 Sq Ft (approx) | 4 Bedrooms | Double Fronted | Beautiful Garden | 2 Bathrooms | Excellent Transport Links | Available Now |

A beautifully presented 4 bedroom, double fronted terraced house ideally located in the heart of Temple Fortune.

Spread onto 3 floors this spacious house of some 1770 sq ft offer ample living and sleeping space with 4 bedrooms and 2 bathrooms.

The house also offers a high quality open plan kitchen, substantial gardens both private and communal and is conveniently located within walking distance from good transport links, local shops and in the enactment area of the some of the areas top schools.

Unfurnished

Available June 2026

EPC D

£1,038 Per Week



RENTALS 020 8209 1144
SALES 020 8458 7311
FAX 020 8209 0307

E rentals@glentree.com
E sales@glentree.com
W www.glentree.com

Glentree Estates Ltd
698 Finchley Road
London NW11 7NE

