



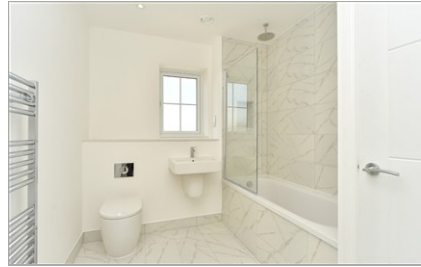
Guide Price
£500,000

Freehold

4x  2x  1x 

Willow Close, Minster
On Sea, Kent, ME12

Wards
Helping you move forwards



Main features

- **En-suite shower room to the main bedroom**
- **Garage with electric door plus driveway parking**
- **High spec finish throughout including air conditioning**
- **Stunning views from the rear of the property**
- **Gated entrance into Willow Close**

Accommodation

GROUND FLOOR

Entrance Hall
Downstairs Cloakroom
Kitchen/Living Area: 32'6 x 11'2 (9.91m x 3.41m)

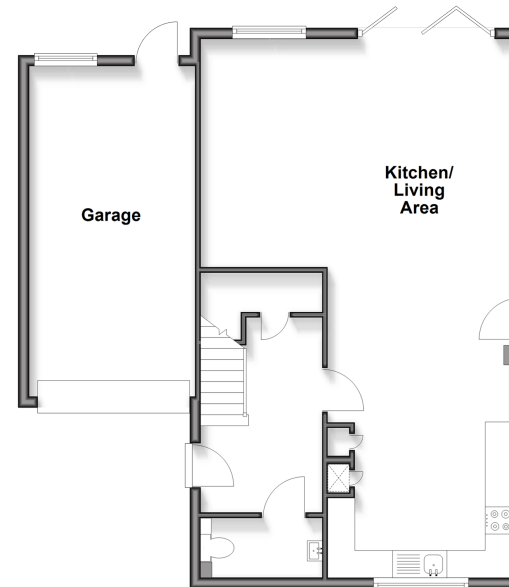
FIRST FLOOR

Landing
Bedroom 1: 14'5 x 6'7 (4.40m x 2.01m)
En-Suite Shower Room
Bedroom 2: 12'6 x 11'4 (3.81m x 3.46m)
Bedroom 3: 14'4 x 10'1 (4.37m x 3.08m)
Bedroom 4: 9'6 x 8'8 (2.90m x 2.64m)
Bathroom

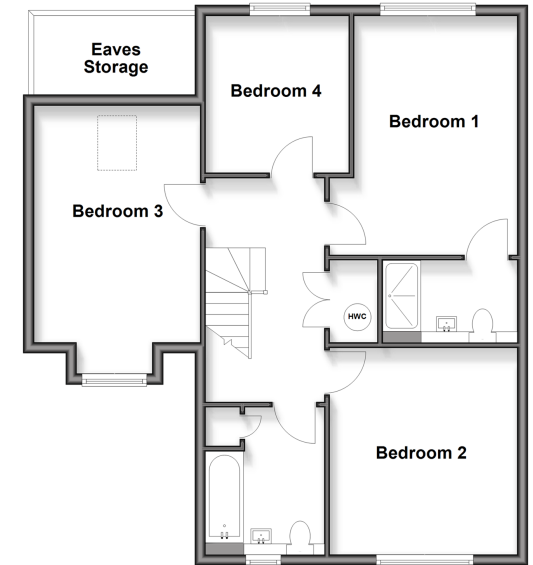
OUTSIDE

Front Garden
Front Driveway
Rear Garden
Garage: 20'0 x 10'1 (6.10m x 3.08m)

Ground Floor
Approx. 76.3 sq. metres (821.5 sq. feet)



First Floor
Approx. 71.7 sq. metres (771.5 sq. feet)



Call Sheerness - 01795 664651 ■ wardsofkent.co.uk

■ Legal advice should be taken to verify fixtures/fittings, planning, alterations and/or lease details

■ Appliances & services are untested, dimensions are approximate and floor plans are not to scale



11635681/20251029/DS/JLS