



Manchester Road

London, E14

Asking Price £340,000

A lovely, well-positioned property in the heart of East London's dynamic Isle of Dogs & Millwall district. Located just moments from the River Thames and with quick access to the city, this home offers both convenience and comfort.

CHESTERTONS



Manchester Road

London, E14

- 417sq ft 2nd floor 1 bedroom apartment.
- 3.2 km from Canary Wharf station
- Internal Living Space
- Private Balcony



The property boasts a bright and airy open-plan living space, flooded with natural light and perfect for both relaxing and entertaining. The spacious double bedroom includes fitted storage, while the modern bathroom is finished with sleek, high-quality fittings. Set within a well-maintained development, the apartment also benefits from access to a private balcony terrace offering impressive views towards Canary Wharf.

Location is everything here! Island Gardens DLR station is only a short walk away, offering quick links to Canary Wharf, the city, and beyond. The Thames riverside path and Greenwich Foot Tunnel are nearby, providing scenic routes for walks or cycling. Locally, residents enjoy a fantastic mix of shops, cafés, and restaurants, while the vibrant business and retail hub of Canary Wharf is just minutes away.

This home is perfect for professionals or couples seeking a contemporary riverside lifestyle with easy access to central London.

Move-in ready and ideally situated, this apartment offers modern living in one of London's most exciting and well-connected neighbourhoods, the perfect balance of urban energy and riverside calm.

Tenure: Leasehold 86 years approx. remaining

Service Charge: £1,500 approx.

Ground Rent: £625 pa

Local Authority: Tower Hamlets

Council Tax Band: C

Score	Energy rating	Current	Potential
92+	A		
81-91	B		
69-80	C		
55-68	D	68 D	74 C
39-54	E		
21-38	F		
1-20	G		

Chestertons Canary Wharf & Greenwich Sales

Harbour Island

28 Harbour Exchange Square

London

E14 9GE

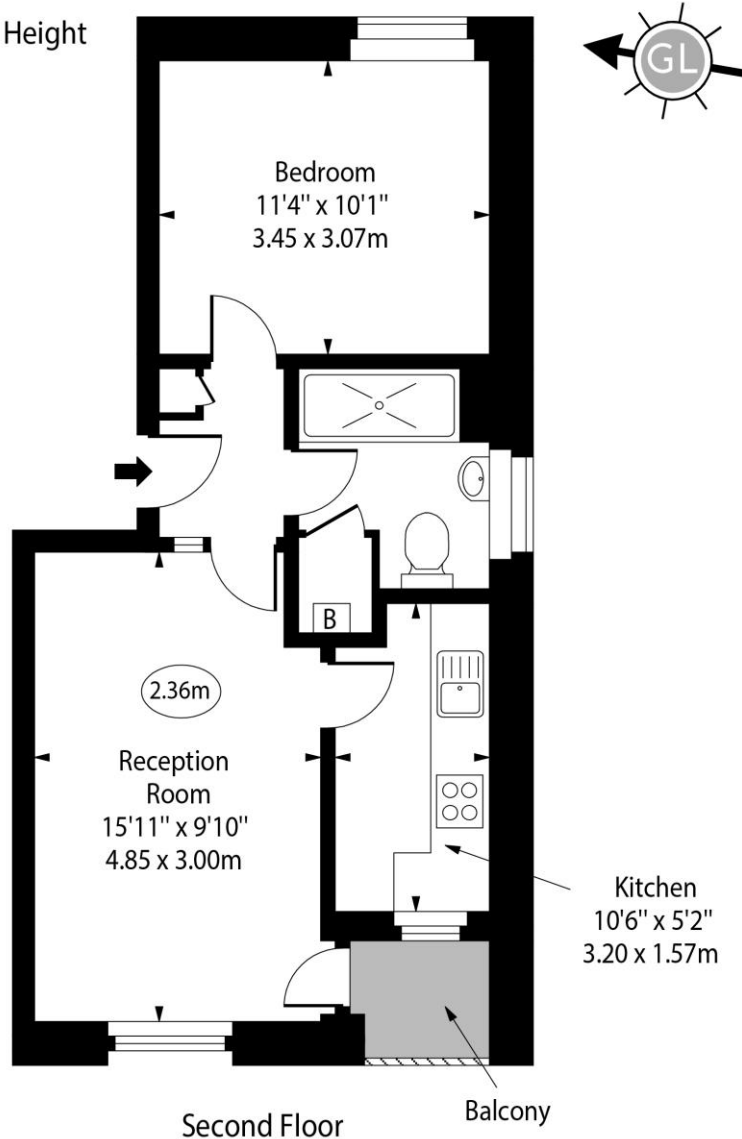
canarywharf@chestertons.co.uk

020 7510 8300

chestertons.co.uk

Manchester Road, E14

○ - Ceiling Height



Approx Gross Internal Area 417 Sq Ft - 38.74 Sq M

Every attempt has been made to ensure the accuracy of the floor plan shown.
However, all measurements, fixtures, fittings, and data shown are approximate interpretations and
for illustrative purposes only. Measured according to the RICS. Not To Scale.

www.goldlens.co.uk

Ref. No. 029810K

