



Skyline House, Swingate, Stevenage

SG1 1AX

Offers In Excess Of £165,000



stevenoates.com



Flat 102, Skyline House Swingate, Stevenage, SG1 1AX

IDEAL INVESTMENT - EXCELLENT YIELD - A spacious and beautifully appointed one bedroom third floor apartment only a short distance from Stevenage mainline train station. This stylish apartment offers an entrance hall, large open plan living space with fully fitted kitchen, double bedroom and a bathroom. The apartment is fully double glazed and has electric central heating.

Skyline House is ideally situated for commuters with Stevenage train station provides direct rail links to London's Kings Cross, a trip to the capital can be made in approximately 23 minutes. Stevenage itself offers a wide choice of leisure facilities, a wide choice of restaurants and shops.



70 Fore Street, Hertford, Hertfordshire, SG14 1BY

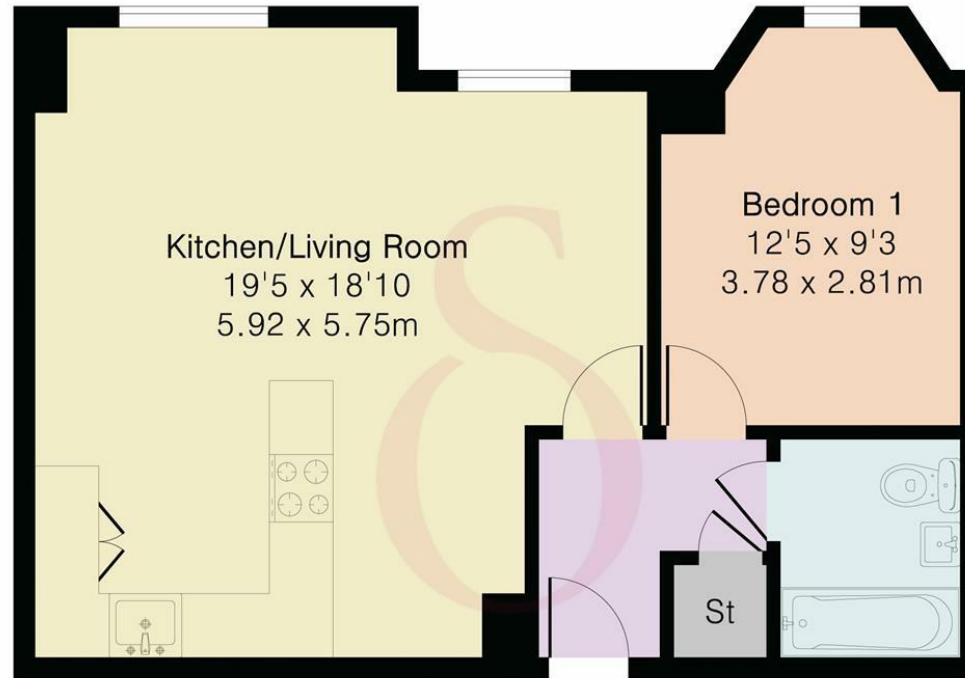


70 Fore Street, Hertford, Hertfordshire, SG14 1BY



70 Fore Street, Hertford, Hertfordshire, SG14 1BY

Approximate Gross Internal Area 530 sq ft - 49 sq m



Third Floor



Floor plan produced in accordance with RICS Property Measurement 2nd Edition. Although Pink Plan Ltd ensures the highest level of accuracy, measurements of doors, windows and rooms are approximate and no responsibility is taken for error, omission or misstatement. These plans are for representation purposes only and no guarantee is given on the total square footage of the property within this plan. The figure icon is for initial guidance only and should not be relied on as a basis of valuation.



These particulars, whilst believed to be accurate are set out as a general outline only for guidance and do not constitute any part of an offer or contract. Intending purchasers should not rely on them as statements of representation of fact, but must satisfy themselves by inspection or otherwise as to their accuracy. No person in this firm's employment has the authority to make or give any representation or warranty in respect of the property.

