



St Georges Square | Halesworth Road | Reydon | IP18 6SD

Guide Price £108,000

NICHOLAS
ESTATES

Key features

- Shares Available between 30% - 75%
Dependant on Affordability
- Popular Village Location
- Two Bedrooms
- Lounge/Diner
- Air Source Heating
- Two Off Road Parking Spaces

Description

Nicholas Estates are pleased to be marketing on behalf of Orwell Housing Association, this two bedroom semi-detached house situated in the popular village of Reydon. Available as part of the shared ownership scheme, the asking price represents a 30% sh



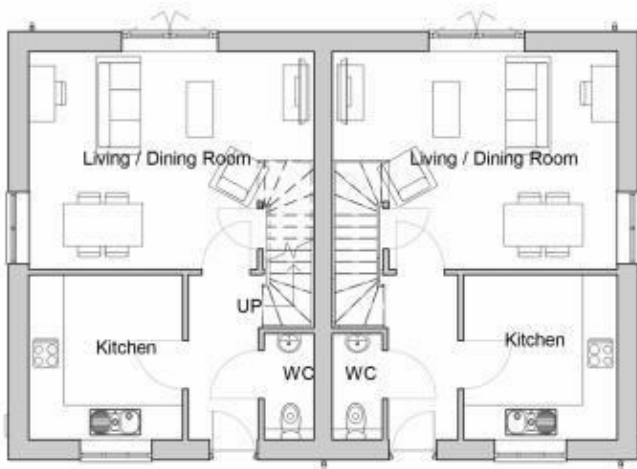
Directions



Nicholas Estates are pleased to be marketing on behalf of Orwell Housing Association, this two bedroom semi-detached house situated in the popular village of Reydon. Available as part of the shared ownership scheme, the asking price represents a 30% sh

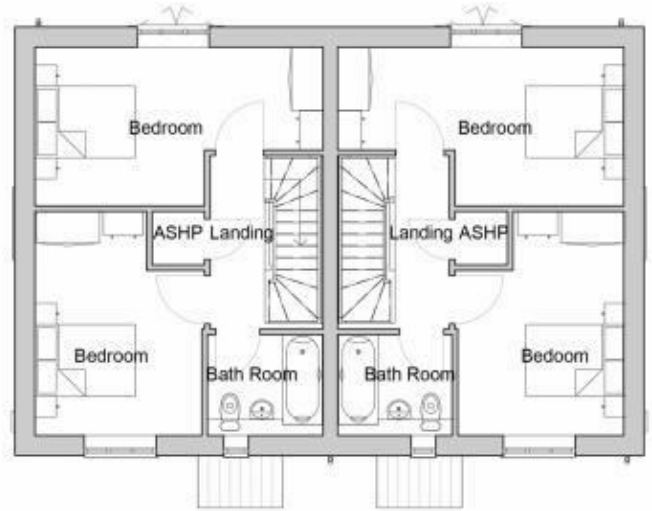


Floor plans



Ground floor

1 : 100



First floor

1 : 100

Energy Efficiency Rating		
	Current	Potential
<i>Very energy efficient - lower running costs</i>		
(92 plus) A		
(81-91) B		
(69-80) C		
(55-68) D		
(39-54) E		
(21-38) F		
(1-20) G		
<i>Not energy efficient - higher running costs</i>		
England & Wales	EU Directive 2002/91/EC	

Council Tax Band EPC Rating

NICHOLAS
ESTATES

173 Hamilton Road
Felixstowe
Suffolk
IP11 7DR

01394 282828

felixstowe@yourhome.co.uk

yourhome.co.uk