



The Grove, W5

£340,000

* Offer in Excess of *

A well-maintained one bedroom top floor flat, offered in good condition and just a short walk from Ealing Broadway. This property benefits from a bright layout, practical living space and a comfortable bedroom.

Offered chain free with a share of the freehold, it's an ideal opportunity for first time buyers or investors looking for a

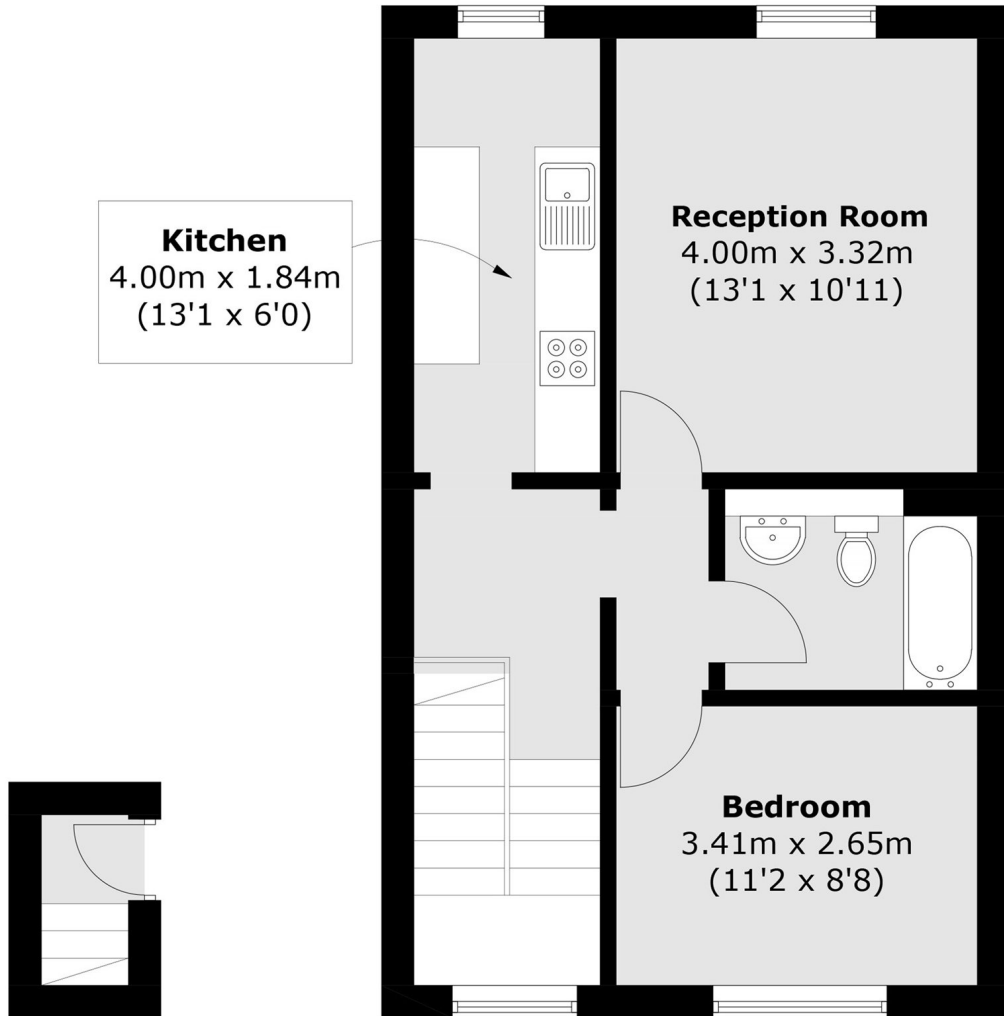


This one bedroom top floor flat is in good condition and offers a bright lounge, a separate kitchen and a bathroom.

Ideally positioned just a short walk from Ealing Broadway (Elizabeth, District and Central lines) and Ealing Common (Piccadilly line) stations The flat is also close to Walpole Park, Lammas Park and the lively shops, cafés and restaurants of Ealing Broadway. Several well regarded schools are also nearby.

- Chain Free • Share of Freehold • Top Floor Flat •
 - Ealing Broadway • Local Parks • Great Transport Links •
-





First Floor

Second Floor

Total area (approx.): 46.6 sq. m (501.6 sq. ft)

Robertson Smith & Kempson Ealing Sales

1 The Broadway, London,
W5 2NT

020 8840 7677

ealingsales@robertsonsmithandkempson.co.uk

Energy Rating: C. We aim to make our particulars both accurate and reliable. However they are not guaranteed; nor do they form part of an offer or contract. If you require clarification on any points then please contact us, especially if you're traveling some distance to view. Please note that appliances and heating systems have not been tested and therefore no warranties can be given as to their good working order.