

Plot 8 Oceanview Developments, Rosewood Site, Place Road, Cowes, Isle of Wight, PO31 7UA
Asking Price £435,000

EPC Rating: Council Tax Band:

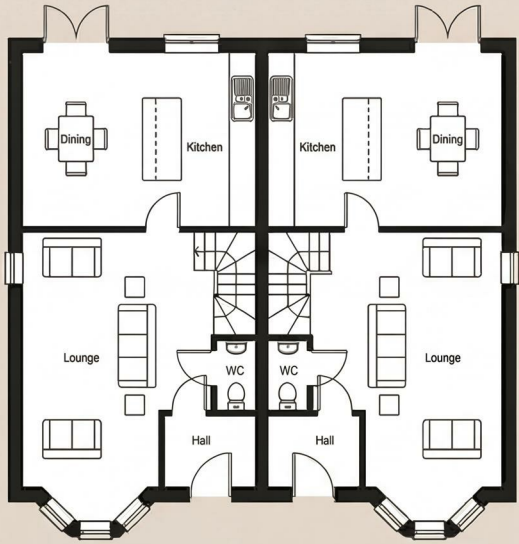


A striking pair of brand-new three-bedroom semi-detached homes with attractive bay-fronted elevations, The Wren at Rosewood offers spacious and beautifully balanced accommodation of approximately 103 sq. m, complete with a superb kitchen/dining room, principal bedroom with ensuite, driveway parking for two vehicles and generous rear gardens.

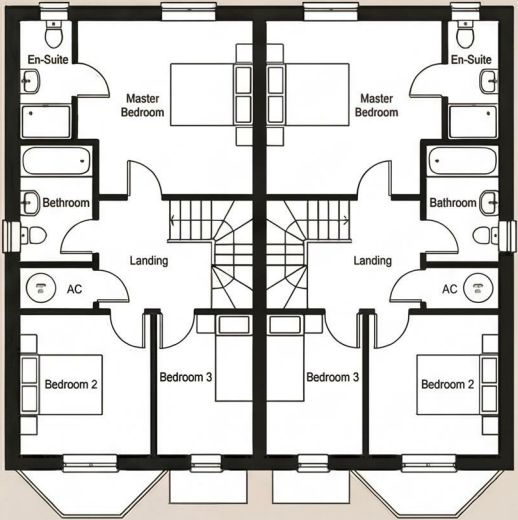
**ELLIOTT
LINCOLN**
ESTATE AGENTS & ASSOCIATES

Reassuringly familiar, refreshingly new

Call or WhatsApp: 01983 642622
office@elliottlincoln.co.uk
www.elliottlincoln.co.uk



Ground Floor Plan



First Floor Plan

Energy Efficiency Rating		Current	Potential
Very energy efficient - lower running costs			
(92 plus)	A		
(81-91)	B		
(69-80)	C		
(55-68)	D		
(39-54)	E		
(21-38)	F		
(1-20)	G		
Not energy efficient - higher running costs			
England & Wales		EU Directive 2002/91/EC	