



## 7 Cleveland Close, Basingstoke - RG22 5AN

£300,000 Freehold

CLOSE TO SCHOOLS • GARAGE • THREE BEDROOMS • TWO RECEPTION ROOMS • DOWNSTAIRS WC • CHAIN FREE



01256 321777



[www.thepropertyexplorer.co.uk](http://www.thepropertyexplorer.co.uk)

the property  
**explorer**

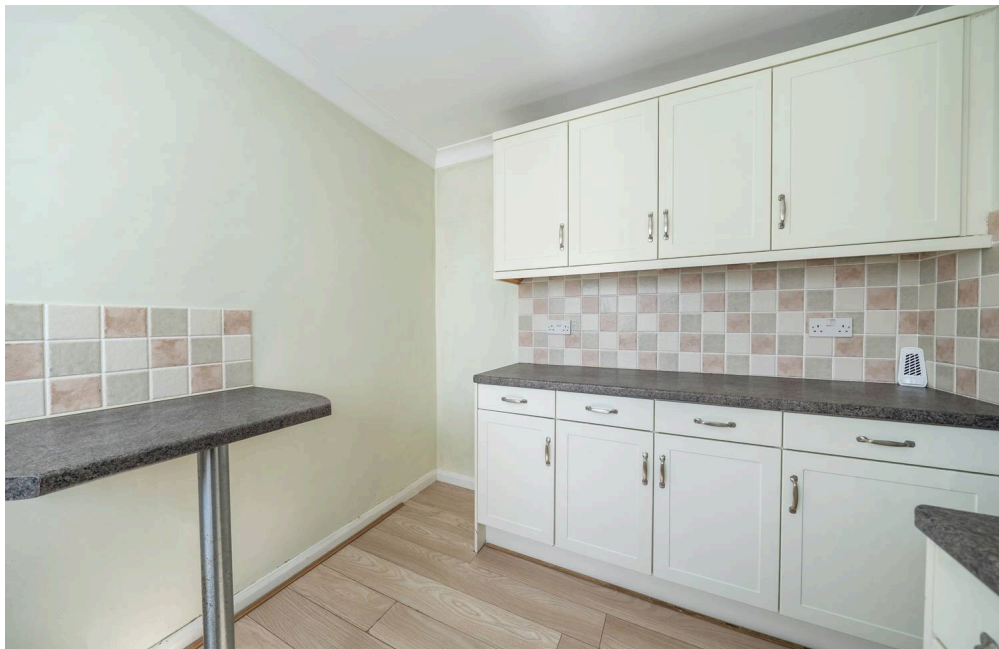
EXPLORER are delighted to offer this well presented three bedroom mid terraced family home, ideally situated within easy reach of local shops, schools and amenities.

Council Tax band: C

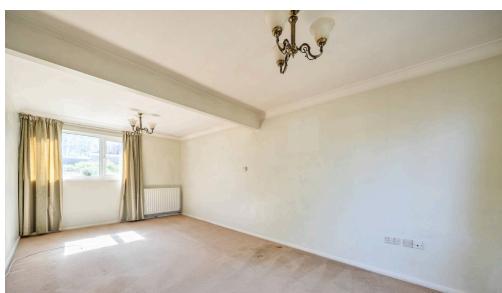
Tenure: Freehold

EPC Energy Efficiency Rating: E

EPC Environmental Impact Rating: E



- › CLOSE TO SCHOOLS
- › GARAGE
- › THREE BEDROOMS
- › TWO RECEPTION ROOMS
- › DOWNSTAIRS WC
- › CHAIN FREE





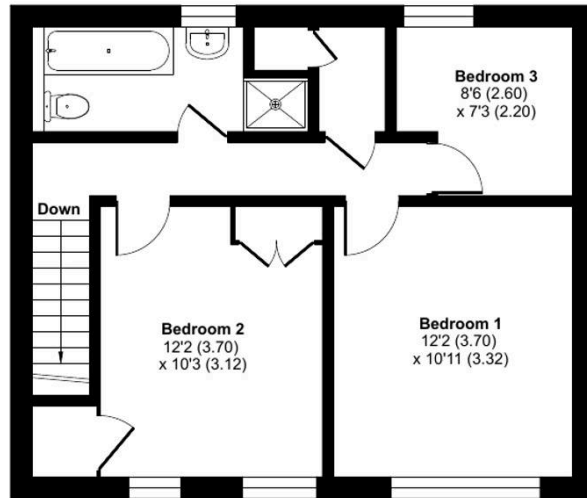
# Cleveland Close, Basingstoke, RG22

Approximate Area = 1008 sq ft / 93.6 sq m

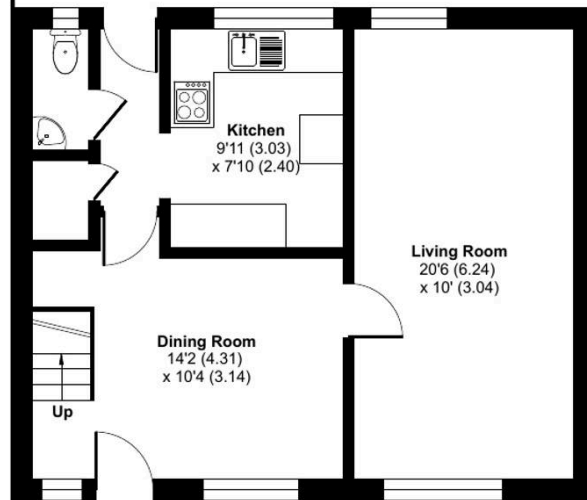
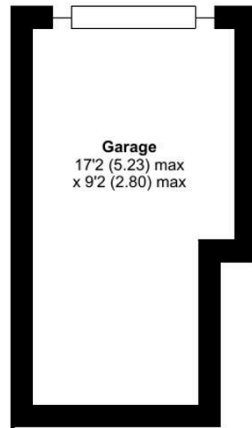
Garage = 145 sq ft / 13.4 sq m

Total = 1153 sq ft / 107 sq m

For identification only - Not to scale



FIRST FLOOR



GROUND FLOOR



Floor plan produced in accordance with RICS Property Measurement 2nd Edition, Incorporating International Property Measurement Standards (IPMS2 Residential). © n1checom 2026. Produced for Property Explorer. REF: 1452816

You can include any text here. The text can be modified upon generating your brochure.