



Upper Addison Gardens, W14

£2,769 Per week

Dexters



Upper Addison Gardens, W14

A stunning four double bedroom split level maisonette on the first, second and third floors of an attractive period conversion. This property is modernised throughout to a very high standard and benefits from four double bedrooms, three bathrooms, an impressive open plan double reception room with kitchen and a private south facing roof terrace.

Upper Addison Gardens is perfectly located for close access to the shops and restaurants of Notting Hill as well as the green spaces of Holland Park and Hyde Park. It is also perfectly located for transport links and amenities of Westfield, West London.

Features

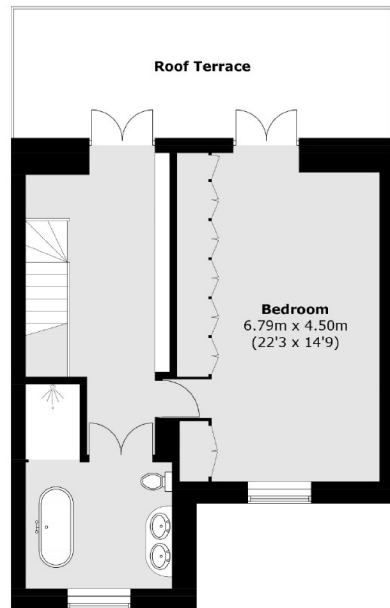
- Split level maisonette
- Four double bedrooms
- High ceilings
- Wealth of period features
- Private terrace
- Double reception room



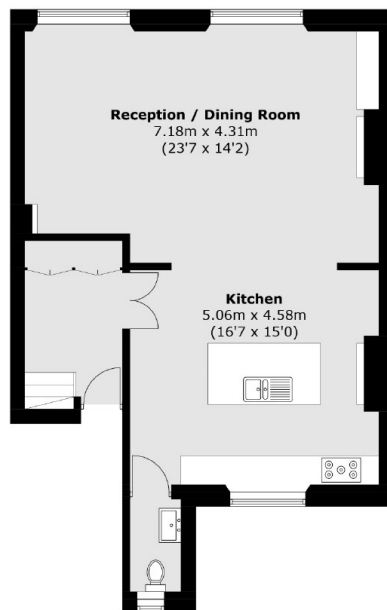




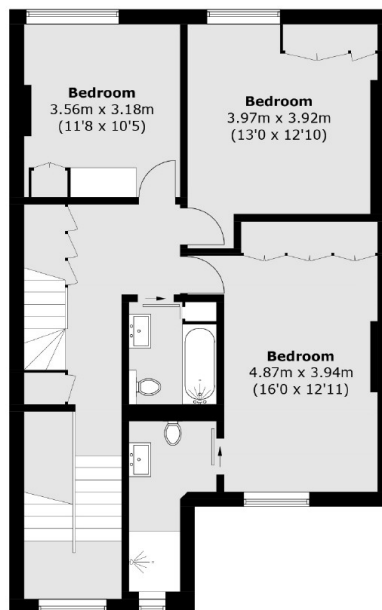
Upper Addison Gardens, London, W14



Third Floor



First Floor



Second Floor

Total area (approx.): 200.6 sq. m (2159.2 sq. ft)
Roof Terrace: 20.5 sq. m (220.7 sq. ft)