



Aylesbury Close

Salford



Offers in Region of £240,000

Aylesbury Close

Salford

This THREE BEDROOM PROPERTY is conveniently located within WALKING DISTANCE OF SALFORD QUAYS & MEDIA CITY! Featuring a driveway for off-road parking, three generous sized bedrooms and a modern kitchen

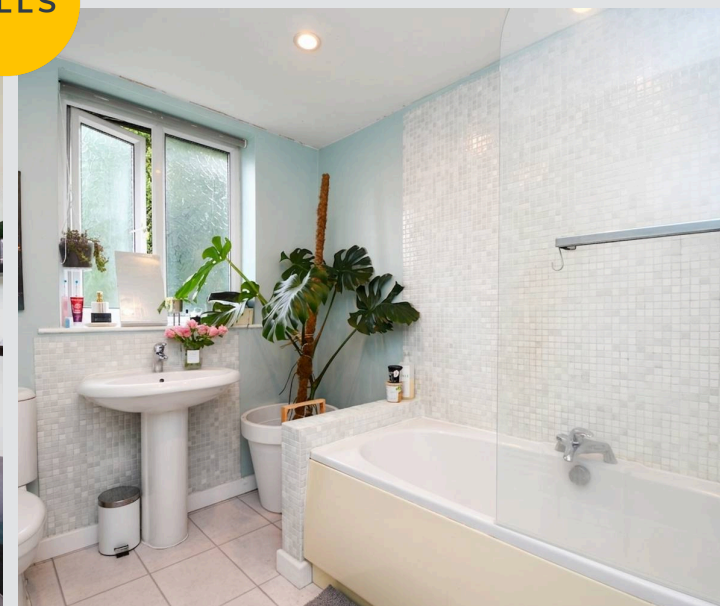
Council Tax band: A

Tenure: Freehold

- Spacious three bedroom terraced property
- Within Walking Distance of Salford Quays and Media City
- Driveway for Off-Road Parking to the Front
- Spacious lounge and separate dining room
- Modern fitted kitchen
- Private, Mature Garden to the Rear
- Three generous sized bedrooms
- Modern three-piece bathroom suite
- Close to Excellent Transport Links into Manchester City Centre



HILLS



Entrance Hallway

9' 7" x 7' 0" (2.91m x 2.14m)

Lounge

13' 3" x 10' 0" (4.05m x 3.04m)

Dining Room

11' 1" x 8' 10" (3.39m x 2.68m)

Kitchen

12' 9" x 11' 6" (3.88m x 3.51m)

Landing

Bedroom One

10' 5" x 17' 6" (3.17m x 5.34m)

Bedroom Two

9' 5" x 10' 9" (2.86m x 3.28m)

Bedroom Three

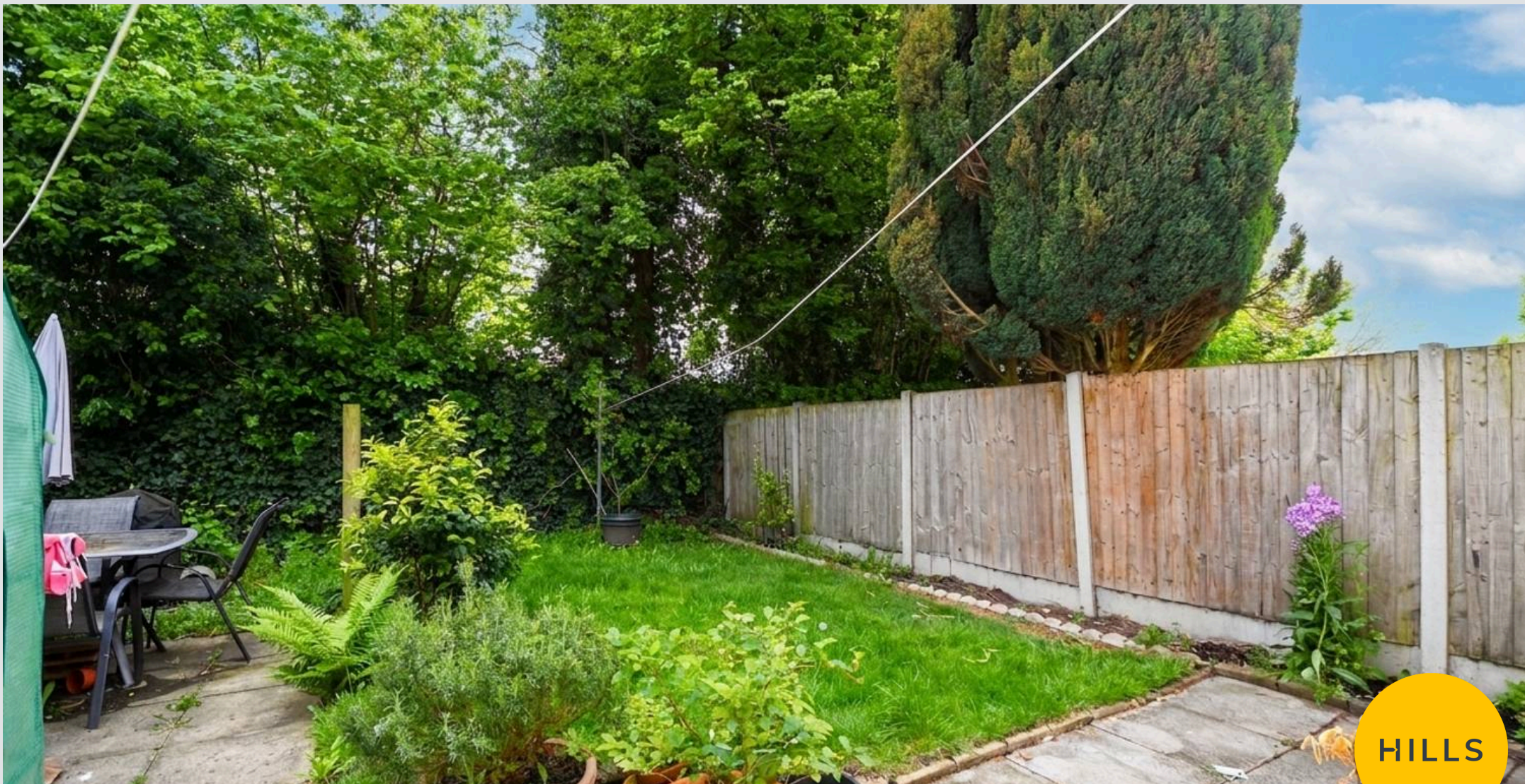
10' 5" x 9' 10" (3.17m x 3.00m)

Bathroom

9' 9" x 7' 2" (2.97m x 2.18m)







Hills | Salfords Estate Agent

Hills Residential, Sentinel House Albert Street – M30 0SS

0161 707 4900

sales@hills.agency

www.hills.agency/



By law, we are required to conduct anti-money laundering checks on all potential buyers and sellers. In line with HMRC guidelines, our trusted partner, Coadjute, will securely manage these checks on our behalf. A non-refundable fee of £45 + VAT per person will apply, and Coadjute will handle the payment. Once an offer is accepted, Coadjute will send a secure link for you to complete the biometric checks. These checks must be completed before we can send the memorandum of sale to all parties. PLEASE NOTE: The Agent has not tested any equipment, fixtures, fittings or services so cannot verify that they are in working order or fit for the purpose. References to the properties tenure are based on information supplied by the seller. You are advised to check the availability of this property before travelling any distance to view. Every effort has been made to ensure these particulars are correct and not misleading but their accuracy is not guaranteed nor do they form part of any contract.