

Emma Terry Homes

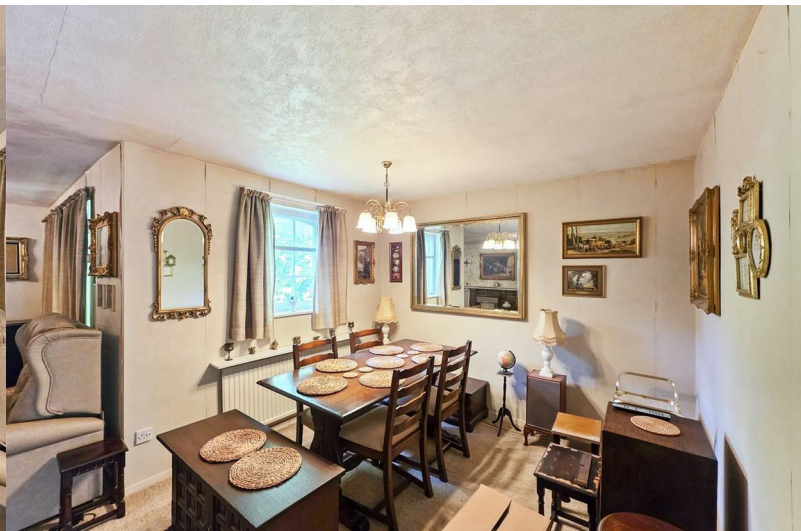
moving made personal



27 Pasture View

Gunthorpe, Nottingham, NG14 7FL

Asking price £250,000



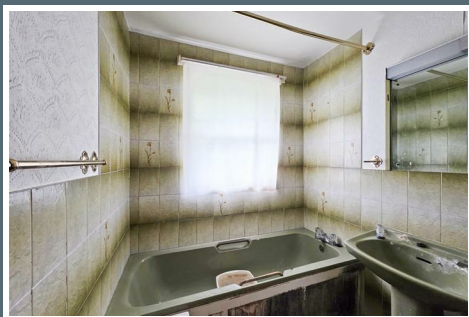
27 Pasture View, Gunthorpe, Nottingham NG14 7FL

Situated in the highly desirable riverside village of Gunthorpe, this two-bedroom detached bungalow presents a rare and exciting opportunity for buyers looking to create their dream home.

Occupying a generous plot in a sought-after location, the property offers well-proportioned accommodation including a breakfast kitchen, spacious living dining room, two bedrooms, separate WC and bathroom, along with a garage.

Requiring full modernisation and comprehensive renovation throughout, the bungalow is ideal for investors, developers or those seeking a rewarding project.

With fantastic potential to reconfigure, extend or improve subject to the necessary permissions, this is a superb chance to transform a property in one of Nottinghamshire's most popular villages, close to local amenities, countryside walks and excellent transport links.



ENTRANCE HALL

BREAKFAST KITCHEN

WC

LIVING/DINER

BEDROOM 1

BEDROOM 2

BATHROOM

GARAGE





Road Map



Hybrid Map



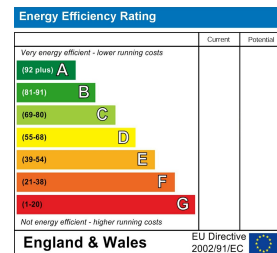
Terrain Map



Viewing

Please contact our Emma Terry Homes Office on 0115 966 57 41 if you wish to arrange a viewing appointment for this property or require further information.

Energy Efficiency Graph



These particulars, whilst believed to be accurate are set out as a general outline only for guidance and do not constitute any part of an offer or contract. Intending purchasers should not rely on them as statements of representation of fact, but must satisfy themselves by inspection or otherwise as to their accuracy. No person in this firm's employment has the authority to make or give any representation or warranty in respect of the property.