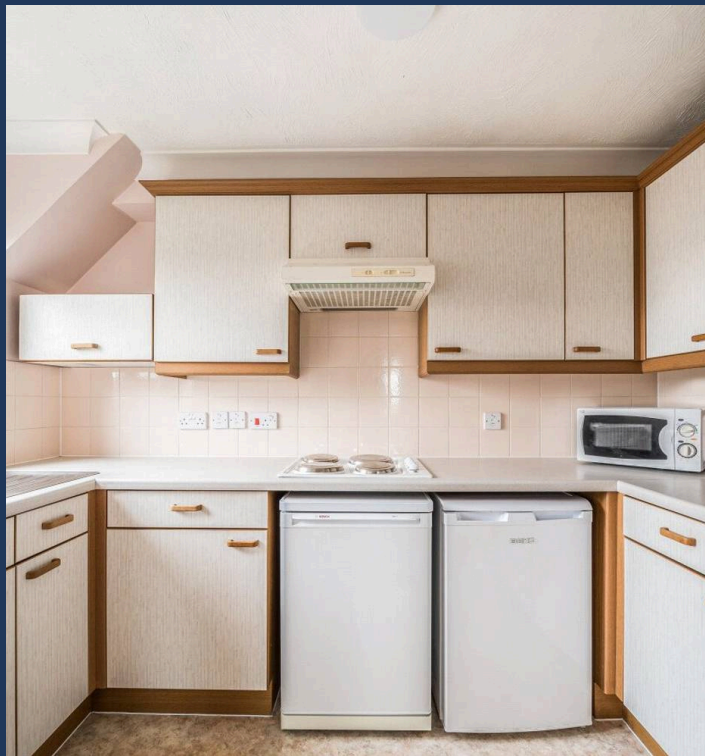




Draper Court Mavis Grove, Hornchurch RM12

Offers in Region of £230,000





## Draper Court Mavis Grove, Hornchurch RM12

Upper floor apartment boasting 2 bedrooms. Set within a peaceful and charming community, this property offers a comfortable and homely retreat. The apartment is conveniently located, providing easy access to local amenities and transport links. Enjoy the serene surroundings and picturesque views from the communal gardens, perfect for relaxation and outdoor activities. Residents can benefit from both resident and off-street parking options, ensuring convenience and security. Don't miss the opportunity to make this delightful retirement apartment your new home. Contact us today to arrange a viewing and experience a lifestyle of comfort and convenience.

Council Tax band: D

Tenure: Leasehold

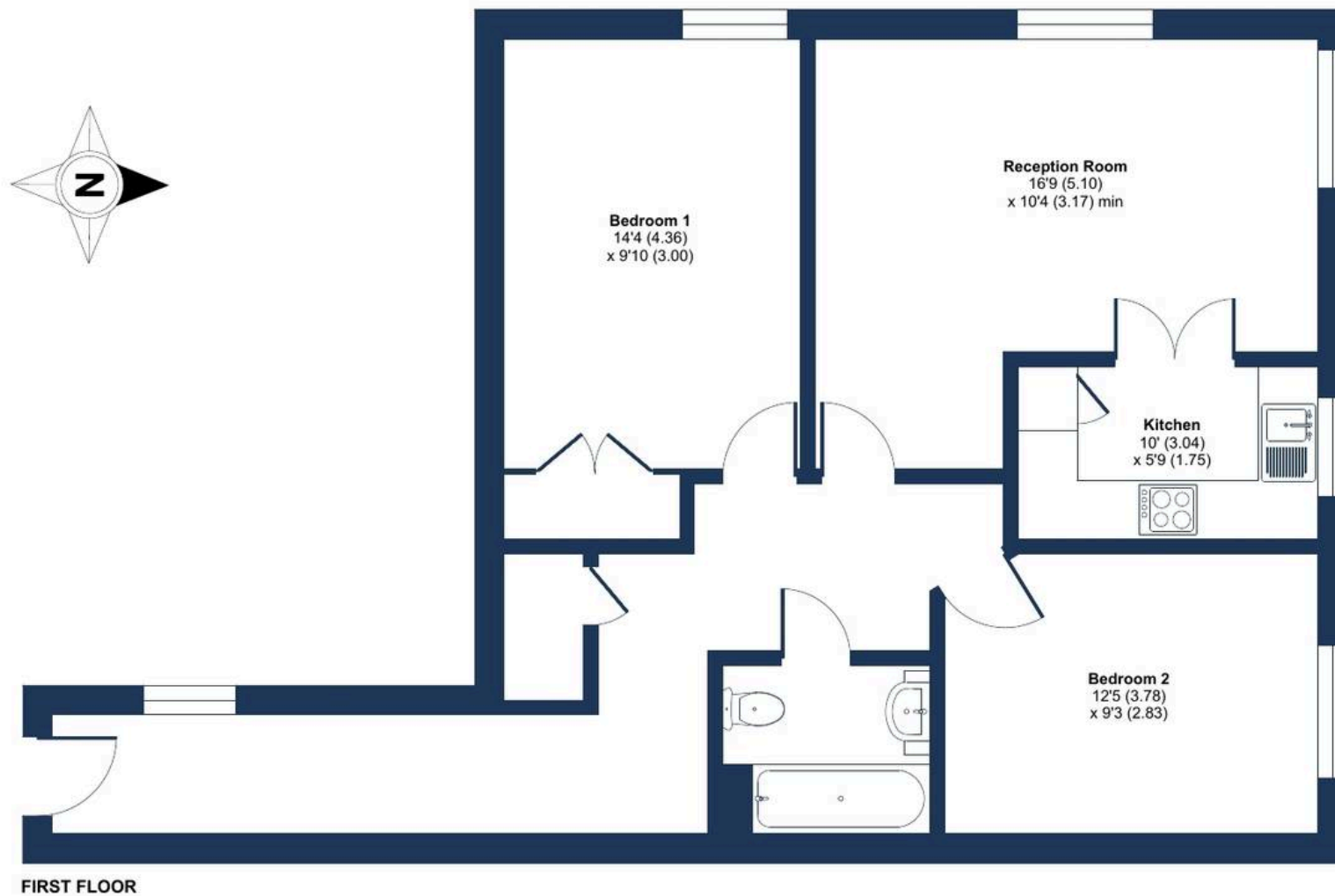
EPC Energy Efficiency Rating: C

EPC Environmental Impact Rating: D

# Draper Court, Mavis Grove, Hornchurch, RM12

Approximate Area = 774 sq ft / 71.9 sq m

For identification only - Not to scale



Floor plan produced in accordance with RICS Property Measurement Standards incorporating International Property Measurement Standards (IPMS2 Residential). © nichecom 2025. Produced for Brookings Estate Agents. REF: 1374565



**BROOKINGS**

SALES • LETTINGS • MANAGEMENT