



## Paddington Street, W1U

### £1,300,000

A two double bedroom, two bathroom lateral apartment located on the second floor of a period building just off Marylebone High Street.

Perfectly located for the restaurants and amenities of Marylebone. Local stations are Baker Street and Regents Park.

### Features

- Reception - Dining Room
- Central Marylebone Location
- Main Bedroom En Suite
- Second Double Bedroom
- Bathroom
- Lease 999 years from 1997



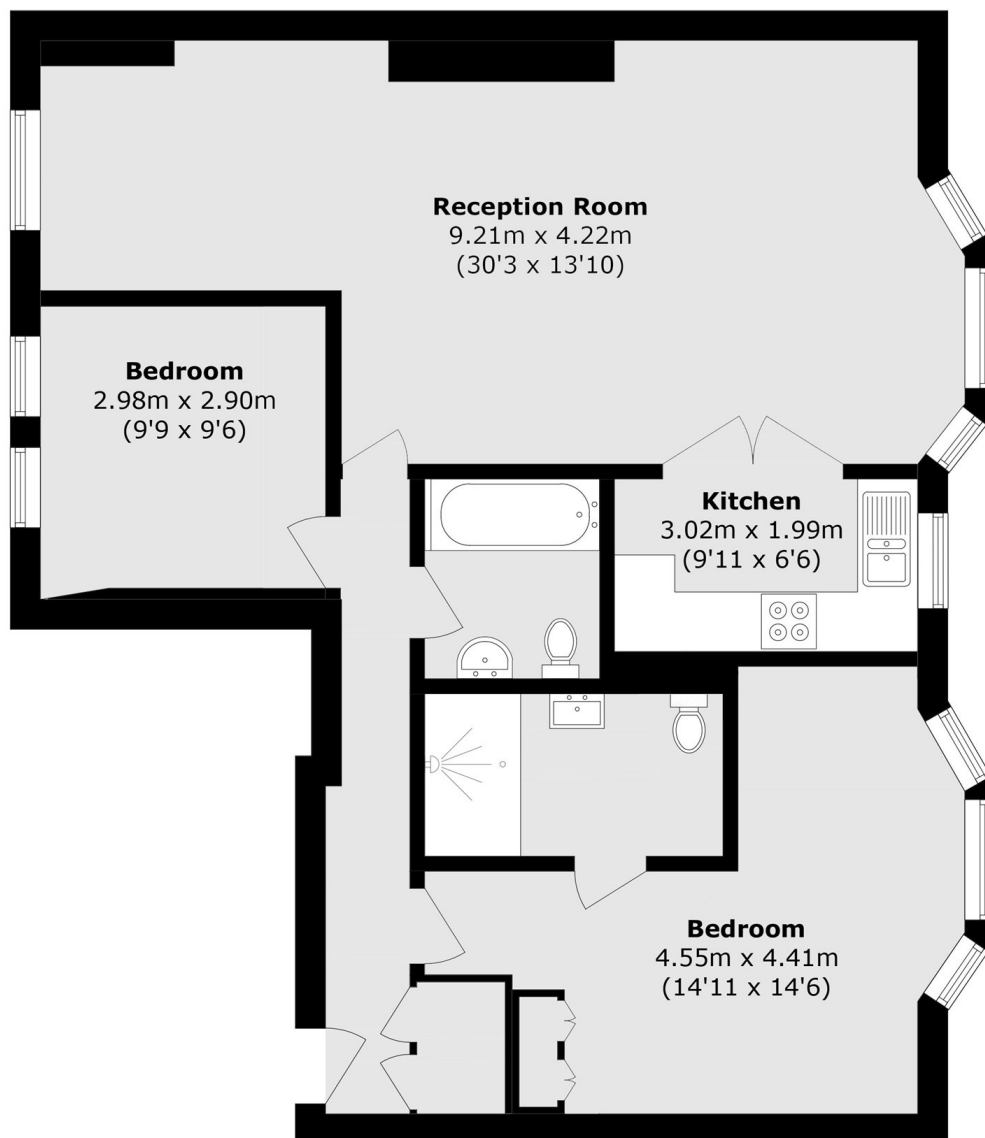
## Paddington Street, W1U

The property has a dual aspect reception room with a dining area which provide superb living and entertaining space, doors open to the separate kitchen with modern appliances. The main bedroom has an en suite shower room. Additionally there is a second double bedroom and a bathroom.





# Paddington Street, London, W1U



## Second Floor

Total area (approx.): 80.6 sq. m (867.5 sq. ft)

# Dexters

Marylebone  
53-55 Weymouth Street  
London  
W1G 8NJ  
Sales  
020 7224 5544

Energy Rating: D. We aim to make our particulars both accurate and reliable. However they are not guaranteed; nor do they form part of an offer or contract. If you require clarification on any points then please contact us, especially if you're traveling some distance to view. Please note that appliances and heating systems have not been tested and therefore no warranties can be given as to their good working order.

 **RICS** | Regulated  
Estate Agent  
and Letting Agent

[dexters.co.uk](https://www.dexters.co.uk)