

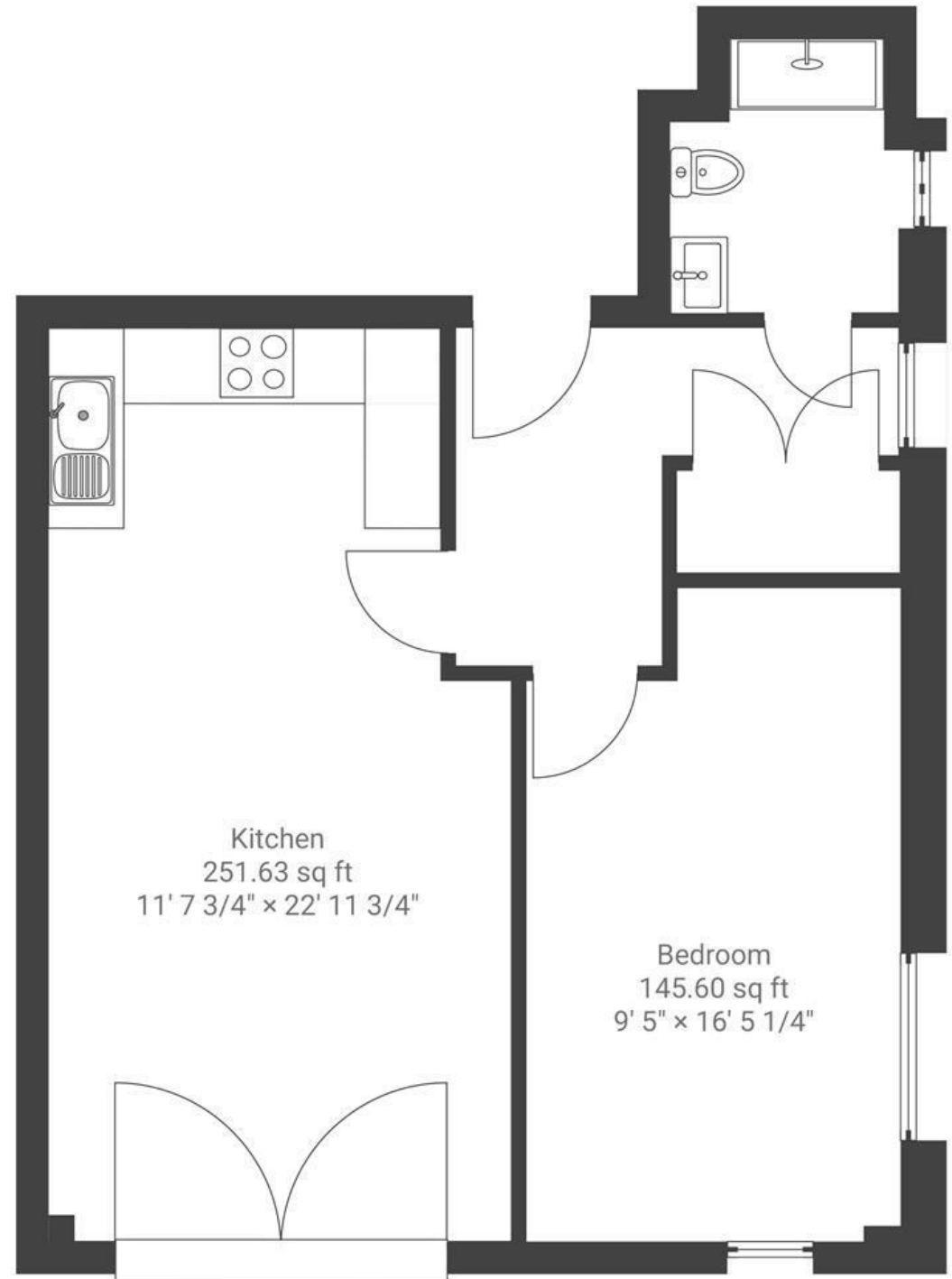
# The Chocolate Factory

GREENBANK

APPROXIMATE FLOOR AREA  
50 SQM / 535 SQFT



THIRD FLOOR



Boardwalk

# The Chocolate

, BRISTOL



£260,000



1 Bedrooms



BS5 6HP



1 Bathrooms

*'Every aspect of the regeneration project of the former Elizabeth Shaw Chocolate Factory has been thoughtfully designed to compliment the surrounding homes and maintain the history of the site. Old, industrial buildings blend with new modern structures to create a development that benefits the whole neighbourhood. The site spans nearly 4.5 acres and will have links onto the Bristol and Bath Railway Path.'*

