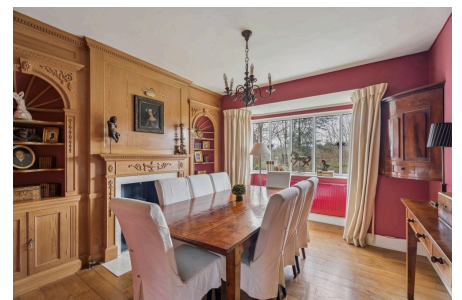


## Berry Lane, Chorleywood, Rickmansworth, WD3 5EY

Guide Price £1,350,000

🛏 5 🚗 2 🚗 2



A Character Detached 1920's Family Home in the Heart of Chorleywood

\*\*\* PLEASE QUOTE REF KW 0404 \*\*\*

## Key Features

- Four/ Five Bedroom Family Home
- Off Road Parking
- Kitchen with Separate Breakfast Room
- Close to Chorleywood Train Station
- Double Garage
- Detached
- Private Rear Garden
- Two Bathrooms
- Ideal Location
- Picturesque Views

Approximate Gross Internal Area  
Ground Floor = 100.9 sq m / 1,086 sq ft  
First Floor = 109.5 sq m / 1,179 sq ft  
Garage / Store = 31.9 sq m / 343 sq ft  
Total = 242.3 sq m / 2,608 sq ft



Illustration for identification purposes only,  
measurements are approximate, not to scale.  
© CJ Property Marketing Produced for EXP - Kate Woodward