



Price

£320,000

Freehold

2x  2x  1x 

**Cranleigh Gardens,
Cowes, Isle of Wight,
PO31**

OVER 60?

Secure this property
for up to **59% less!**

Pittis 
Helping you move forwards



Main features

- Detached chalet bungalow in a quiet cul-de-sac location
- Off road parking for multiple cars
- Conservatory and low maintenance garden
- Conveniently located in the ever popular area of Northwood
- Near to local amenities and transport links

Accommodation

GROUND FLOOR

Hall

Shower Room

Lounge / Dining Room: (L-shaped) 13'6 x 11'7 (4.12m x 3.53m) plus 15'10 x 9'9 (4.83m x 2.97m)

Conservatory: 13'1 x 9'10 (3.99m x 3.00m)

Kitchen / Breakfast Room: 23'2 x 7'9 (7.07m x 2.36m)

FIRST FLOOR

Landing

Bedroom 2: 14'8 x 7'10 (4.47m x 2.39m)

Bathroom

Bedroom 1: 14'8 x 13'0 (4.47m x 3.97m)

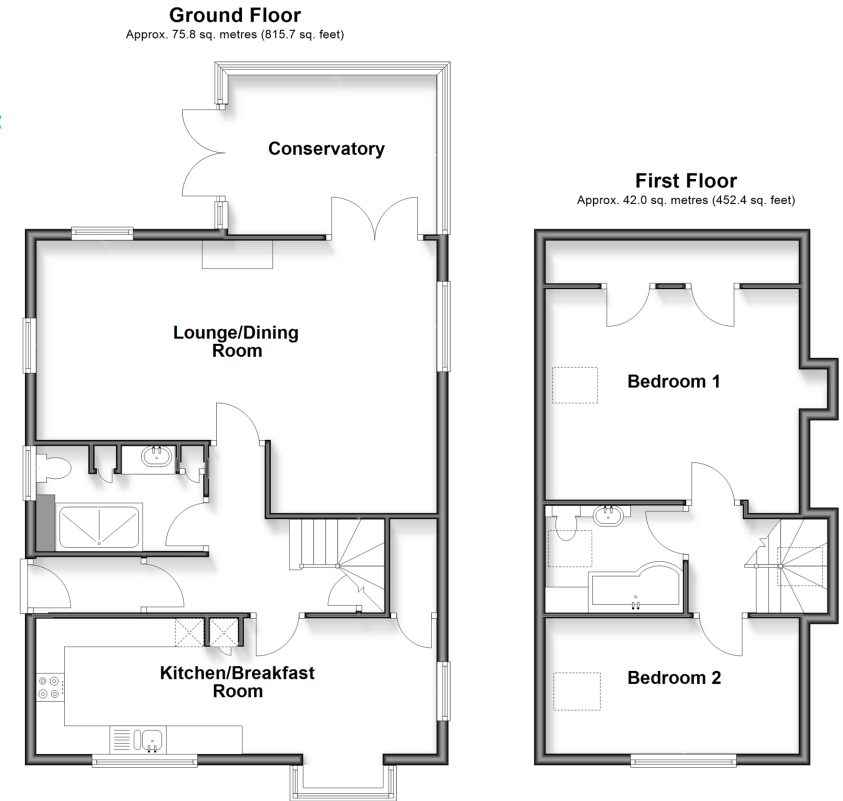
OUTSIDE

Driveway

Front Garden

Rear Garden

Workshop: 8'6 x 8'6 (2.59m x 2.59m)



Call Cowes - 01983 292345 ■ pittis.co.uk

- The seller is a person connected with Pittis as defined in the Estate Agents Act 1979
- Legal advice should be taken to verify fixtures/fittings, planning, alterations and/or lease details
- Appliances & services are untested, dimensions are approximate and floor plans are not to scale
- Through a Homewise Home For Life Plan people aged 60+ can secure this property for up to 59% less, by purchasing a Lifetime Lease



60119343/20260122/SC/MMF