

Tilley Close, Hoo, Rochester, ME3 9HS

Guide Price £150,000 - £160,000

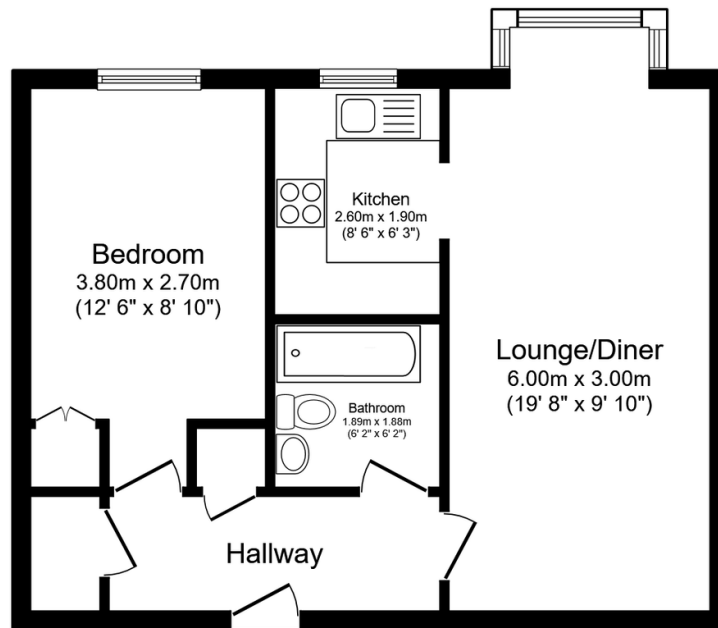
🛏 1 🚿 1 🚗 1



CALL TO BOOK YOUR VIEWING. Guide Price £150,000 - £160,000. If you are looking to downsize and enjoy your retirement then this apartment overlooking the gardens with lift access and a fantastic welcoming community would be ideal. Offered for sale with no chain and ready to move straight into means you can just decorate to your own taste. You have a 24 Hour emergency system in place giving you reassurance there is always someone available should you need. There are also beautiful communal gardens to enjoy and easy parking for residents and guests. QUOTE AP0490

Key Features

- One Double Bedroom Apartment
- Overlooking The Beautiful Communal Gardens
- Village Location
- Bus Stop A Short Walk Away
- Walking Distance To Shops and Doctors Surgery
- Easy Resident Parking
- Easy Access to A2
- Welcoming Community and 24 Hour Emergency Service
- Tenure Leasehold/Council Tax Band B
- QUOTE AP0490



Floor Plan

Floor area 47.9 sq.m. (516 sq.ft.)

Total floor area: 47.9 sq.m. (516 sq.ft.)

This floor plan is for illustrative purposes only. It is not drawn to scale. Any measurements, floor areas (including any total floor area), openings and orientations are approximate. No details are guaranteed, they cannot be relied upon for any purpose and do not form any part of any agreement. No liability is taken for any error, omission or misstatement. A party must rely upon its own inspection(s). Powered by www.Propertybox.io