



CANNON STREET ROAD, LONDON, E1

£2,450 PCM

* VIRTUAL TOUR AVAILABLE * Goldman Greg are delighted to offer this two bedroom, two bathroom split level apartment located on Cannon Street Road in Whitechapel with a private terrace!

On the ground floor you will find a good sized second double bedroom and a well equipped open plan kitchen and living room with direct access onto a private terrace which is perfect for the approaching summer months! There's also a main bathroom with a bath tub and toilet.

The lower ground floor offers an impressively sized double bedroom with it's own en-suite bathroom.

Cannon Street Road is finished to an excellent standard throughout and offers plenty of space throughout (1054 sq ft in total) and plenty of storage cupboards too.

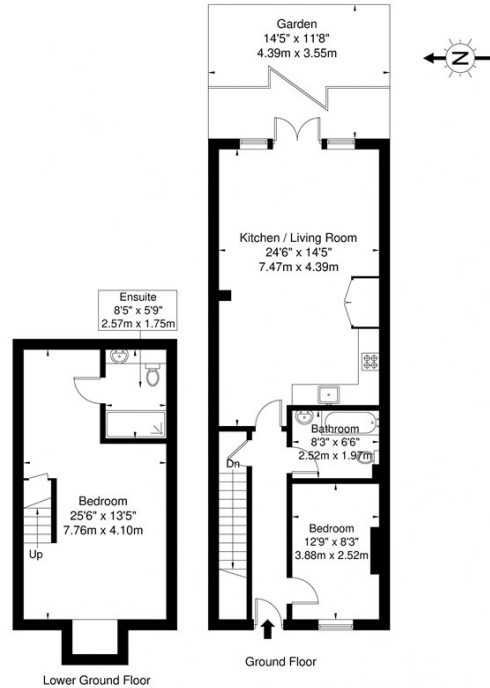
Available 11/05/2026 early viewings are recommended.



Goldman Greg

Cannon Street, E1 0BH

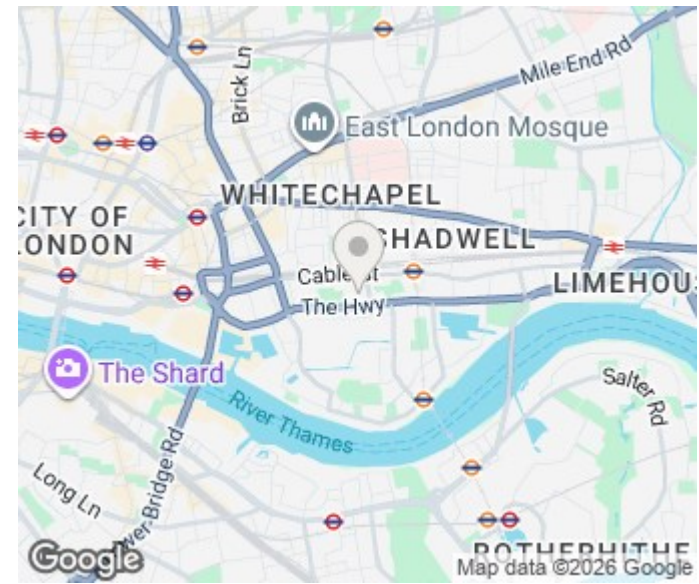
Approx. Gross Internal Area = 98 sq m / 1054 sq ft



Ref

Copyright **BLEU PLAN**

The Floor plan is not to scale and measurements and areas shown are approximate and therefore should be used for illustrative purposes only. The plan has been prepared in accordance with the RICS code of Measuring Practice and whilst we have confidence in the information produced it must not be relied on. If there is any aspect of particular importance, you should carry out or commission your own inspection of the property.
Copyright © BLEUPLAN



Energy Efficiency Rating		Current	Potential
Very energy efficient - lower running costs			
(92 plus)	A		
(81-91)	B		
(69-80)	C		
(55-68)	D	68	78
(39-54)	E		
(21-38)	F		
(1-20)	G		
Not energy efficient - higher running costs			
England & Wales		EU Directive 2002/91/EC	

Agents Note: Whilst every care has been taken to prepare these particulars, they are for guidance purposes only. All measurements are approximate and are for general guidance purposes only and whilst every care has been taken to ensure their accuracy, they should not be relied upon and potential buyers/tenants are advised to recheck the measurements

Goldman Greg
143 Leaman Street
London
E1 8EY

02079770018
leads@goldmangreg.co.uk
www.goldmangreg.co.uk

