



Tower Bridge Road, SE1 £3,500 PCM

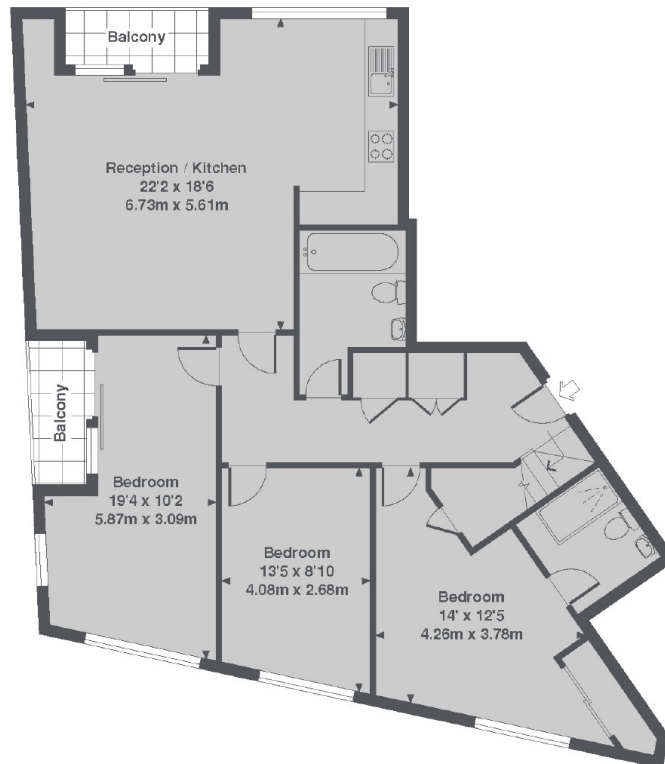
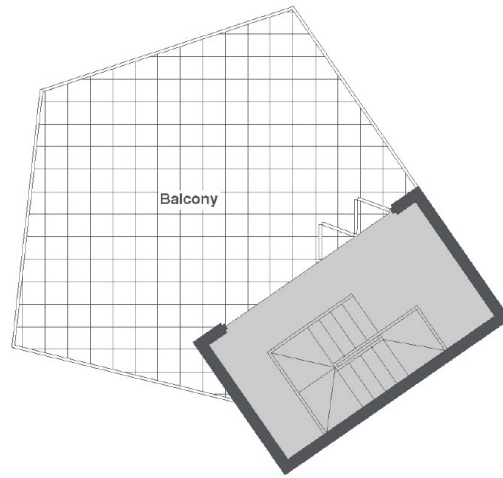
An attractive three double bedroom split level Penthouse Apartment in the striking Tower View Building. The property has a spacious roof terrace with panoramic views and a large kitchen-diner and separate living room.

Tower View is half a mile from London Bridge. The shops of Bermondsey Street are close by as are the riverside restaurants in Shad Thames. The world famous Borough Market is less than a mile away.

Features

- Three Double Bedrooms
- Private Roof Terrace
- Two Bathrooms
- Newly Refurbished
- Two Balconies
- Split Level

Tower Bridge Road, London, SE1



Tower Bridge Road, SE1
Total Approx. Floor area 1140 Sq. Ft. (105.9 Sq. M.)