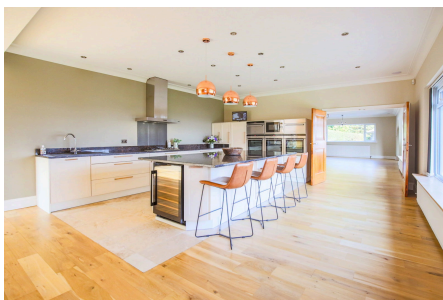


Upleatham, TS11 8AG

£1,899,000



Set in a commanding elevated position with panoramic countryside views, this exceptional Bavarian-style villa offers almost 10,000 sq ft of accommodation, a substantial indoor swimming pool and leisure suite, self-contained annex and detached triple garage.

Key Features

- Stunning luxury home set in approx. 1.3 acres
- Seven bedrooms
- Swimming pool, gym and sauna
- Further two-bedroom annexe
- High spec security
- Incredible landscaped gardens and sweeping lawns, stables and sheds
- Triple-garage
- CHAIN-FREE SALE
- Incredible views across the moorland
- Council tax band H



This floorplan is for illustrative purposes only and is not 100% to scale. Measurements of Rooms, Windows, Doors and any other items are an approximate and no responsibility is taken for any error, misstatement or omission. Items such as bathroom suites, or kitchens are representative only any may not look like the real item. Made by Daniel Kitching Photography.