



40 The Manor House, Avenue Road, Leamington Spa, CV31 3ND

A particularly well maintained fourth floor apartment, providing well appointed one bedroomed accommodation featuring balcony with extensive open views and allocated parking space, within this highly regarded town development.

Asking Price
£179,950



40 The Manor House, Avenue Road, Leamington Spa, CV31 3ND

[The Manor House](#)

Is a conversion of the original Manor House Hotel with substantial modern extension providing a variety of self-contained apartments of varying sizes conveniently situated within easy working distance of the town centre and all amenities, including shops, restaurants and coffee shops, a variety of recreational facilities, and also a very short walk to the local railway station.

The development features allocated car parking and communal gardens surrounding the development and has consistently proved very popular in recent years.

[The Property](#)

Is a particularly well maintained fourth floor apartment providing well appointed one bedroomed accommodation, which features a most pleasant well appointed open plan living/kitchen arrangement, leading to a most impressive balcony enjoying extensive open views over Leamington Spa.

In detail the accommodation comprises:-

[Communal Entrance Hall](#)

With intercom system, lift and staircase leads to the...

[Private Entrance Hall](#)

With Amtico flooring, electric radiator, airing cupboard with electric boiler/cylinder and video entry system.

[Open Plan Living/Dining Room/Fitted Kitchen](#)

18'2" max x 12'8" (5.54m max x 3.86m)

Living/Dining area with steps up to double glazed door to balcony. Electric night storage heater.

[Kitchen Area](#)

Including range of base cupboard and drawer units with complimentary work surfaces and stainless steel returns, matching range of high level cupboards, built-in single drainer stainless steel sink unit with mixer tap, built-in Smeg oven and four ring ceramic hob unit with stainless steel splashback and extractor, built-in dishwasher, washing machine, fridge freezer, downlighters, roller blind, Amtico flooring.



Bedroom

11' x 8'10" with built-in w'robes (3.35m x 2.69m with built-in w'robes)

With double built in wardrobe with hanging rail, shelves, mirrored sliding doors, Creda night storage heater, Velux windows with blinds

Bathroom/WC

7' x 4'10" (2.13m x 1.47m)

With white suite comprising of panelled bath, wash hand basin and low flush WC inset to vanity unit with concealed cistern, tiled splashback, fitted mirror, integrated shower unit and screen, downlighters, extractor fan and heated towel rail.

Outside

There is a designated car parking space located within the development numbered 64, and pleasant communal grounds surround the whole of the development, being an elevated position above the river.

Mobile Phone Coverage

Good outdoor, variable in-home signal is available in the area. We advise you to check with your provider. (Checked on Ofcom 2025).

Broadband Availability

Standard/Superfast Broadband Speed is

available in the area. We advise you to check with your current provider. (Checked on Ofcom 2025).

Tenure

The property is understood to be leasehold although we have not inspected the relevant documentation to confirm this. We understand there to be a 125 year lease (01/12/2004), with 104 years remaining, service charge is £1,266 per annum and ground rent is capped at £250 per annum. Please verify this information with your legal advisers. Further details upon request.

Services

All mains services are understood to be connected to the property with the exception of gas. NB We have not tested the central heating, domestic hot water system, kitchen appliances or other services and whilst believing them to be in satisfactory working order we cannot give any warranties in these respects. Interested parties are invited to make their own enquiries.

Council Tax

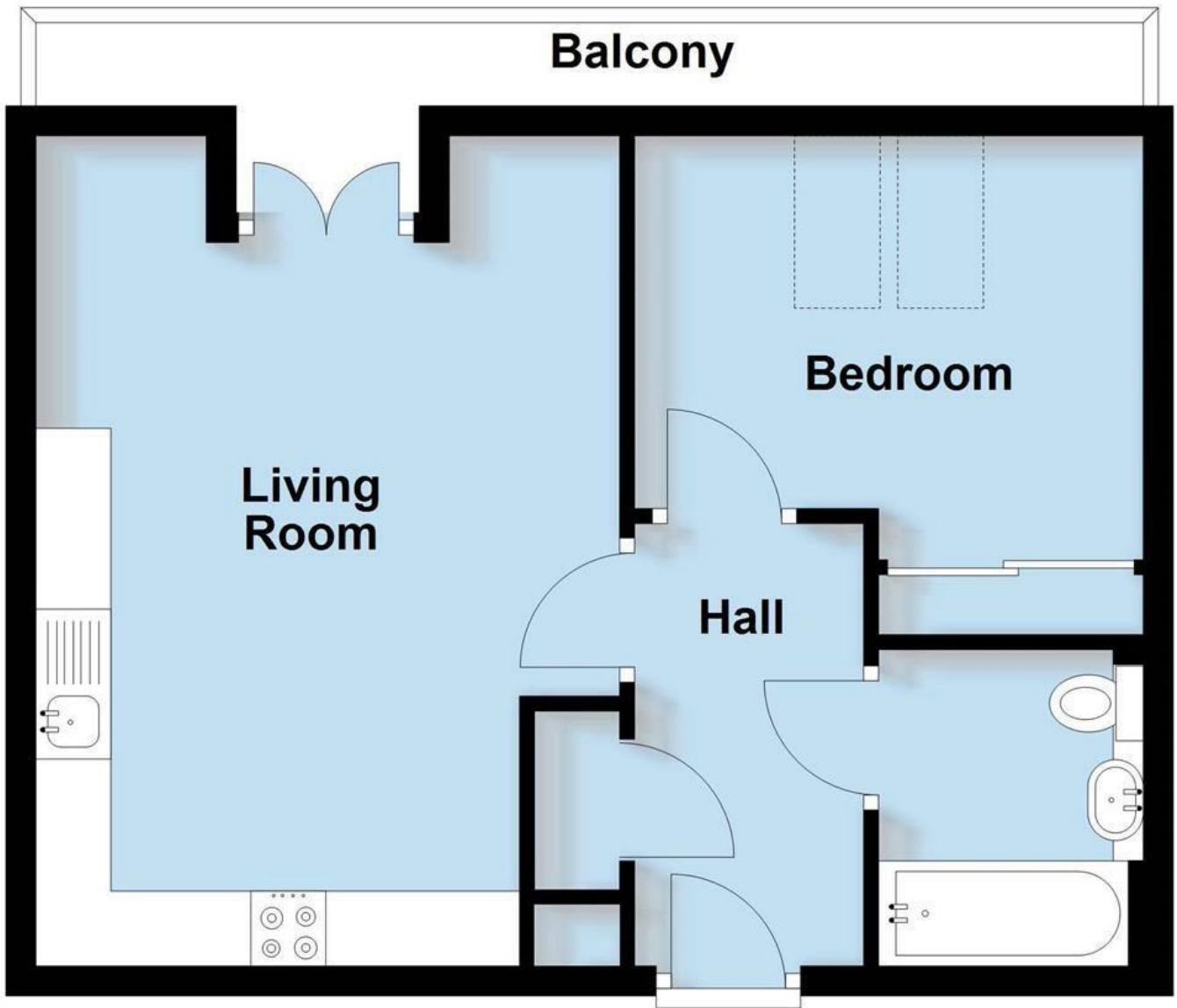
Council Tax Band A.

Location

Forth Floor
CV31 3ND

Fourth Floor

Approx. 39.7 sq. metres (427.7 sq. feet)



Total area: approx. 39.7 sq. metres (427.7 sq. feet)

This plan is for illustration purposes only and should not be relied upon as a statement of fact

Energy Efficiency Rating		
	Current	Potential
Very energy efficient - lower running costs		
(92 plus) A		
(81-91) B		
(69-80) C	73	73
(55-68) D		
(39-54) E		
(21-38) F		
(1-20) G		
Not energy efficient - higher running costs		
England & Wales	EU Directive 2002/91/EC	

Leamington Spa Office
Somerset House
Clarendon Place
Royal Leamington Spa
CV32 5QN

01926 881144

ehbresidential.com

Also at: 17-19 Jury Steet, Warwick, Warwickshire, CV34 4EL

• Residential Estate Agents • Lettings and Property Managers • Land and New Homes Agents



IMPORTANT NOTICE ehB Residential for themselves and for the Vendors of this property, whose agents they are, give notice that:- 1. The particulars are intended to give a fair and substantially correct overall description for the guidance of intending purchasers and do not constitute part of an offer or contract. Prospective purchasers and lessees ought to seek their own professional advice. 2. All descriptions, dimensions, areas, reference to condition and necessary permissions for use and occupation and other details are given in good faith, and are believed to be correct, but any intending purchasers should not rely on them as statements or representations of fact, but must satisfy themselves by inspection or otherwise as to the correctness of each of them. 3. No person in the employment of ehB Residential has any authority to make or give any representations or warranty whatever in relation to this property on behalf of ehB Residential, nor enter into any contract on behalf of the Vendor. 4. No responsibility can be accepted for any expenses incurred by intending purchasers in inspecting properties which have been sold, let or withdrawn. Measurement and other information. All measurements are approximate. While we endeavour to make our sales particulars accurate and reliable, if there is any point which is of particular importance to you, please contact this office and we will be pleased to check the information for you, particularly if contemplating travelling some distance to view the properties. 5. The agents will require identity documentation and evidence of address before entering into any transaction under money laundering regulations 2007.