



## Ebury Bridge Road, SW1W

£496 Per week

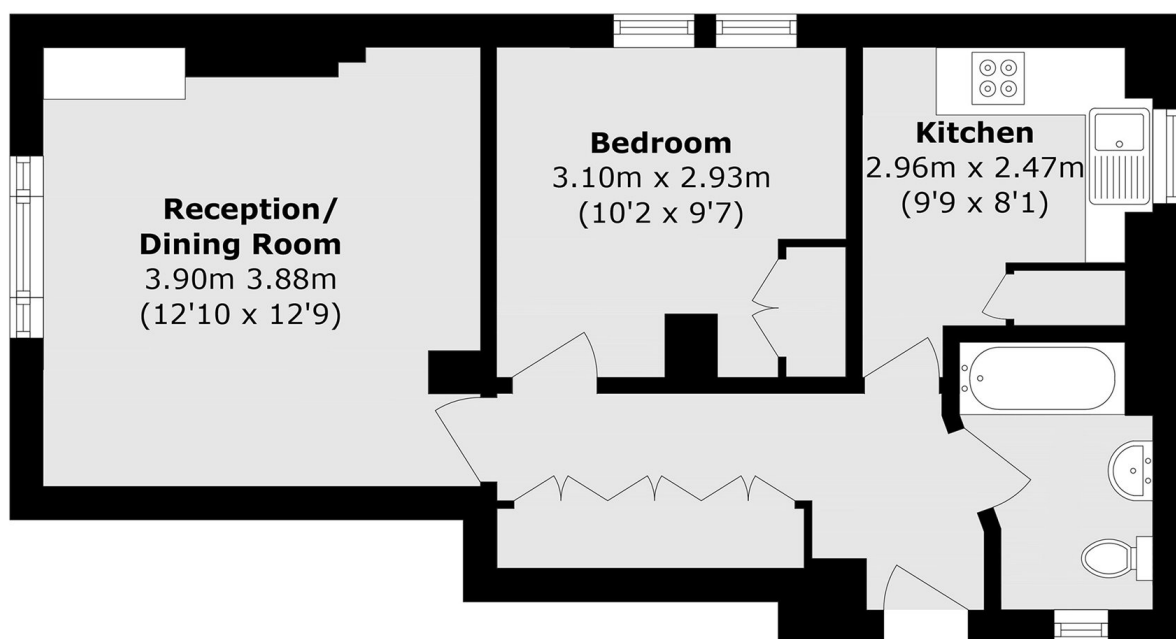
Set within a secure residential development moments from London Victoria, this delightful one bedroom flat offers generously proportioned interiors with ample storage throughout.

Ebury Bridge Road benefits close proximity to a collection of boutiques, pavement lined cafes and galleries along Pimlico Road with Victoria also nearby. Sloane Square is just moments away offering a wide range of designer shops, bars and restaurants.

### Features

- Secure Residential development
- Fitted Storage Space
- Generous Reception Room
- Well equipped kitchen
- Excellent Transport Links
- Lift Access

# Ebury Bridge Road, London, SW1W



## Second Floor

Total area (approx.): 43.8 sq. m (471.4 sq. ft)