



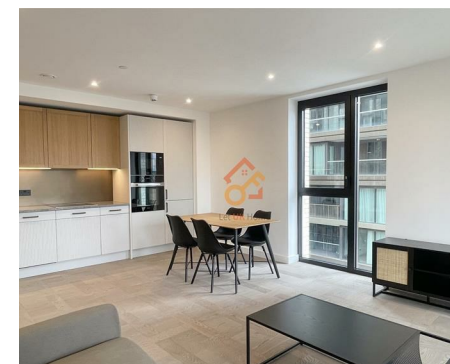
Let **UK** Home

2 Bedrooms

Flat

Located in London

£4,150 Per Month



info@letukhome.co.uk

<https://www.letukhome.co.uk/>

01795 358 886



2 Merino Gardens London

E1W 2DR



Let UK Home are excited to offer this spectacular two bedroom apartment in the heart of Merino Gardens part of the London Dock.

This property comprises a large bright open plan kitchen and living room with great views, two double bedrooms with fitted wardrobes (master en-suite), a large family sized bathroom and ample storage.

Residents will benefit from a concierge and onsite fitness facilities including swimming pool, vitality pool, steam room and sauna, gym and fitness studios.

The development is located near the riverside, surrounded by beautiful squares and boulevards, close to City of London and St Katharine Docks. The world-famous Tower Bridge is within walking distance. Gauging Square is the center of the entire community, lined with restaurants, cafes and bars. The supermarket-Sainsbury's brings ease and convenience to residents' daily life.

Famous universities are clustered nearby, offering abundant educational resources. City Hall Music and Drama Academy, Cass Business School, Queen Mary University of London, London South Bank University, City University London, and King's College London are all within walking distance.

The development is close to four tube stations: Tower Hill, Aldgate East, Wapping, and Shadwell, where you can take the District Line, Circle Line, Hammersmith and City Line, DLR, and Overground to reach various areas of London.

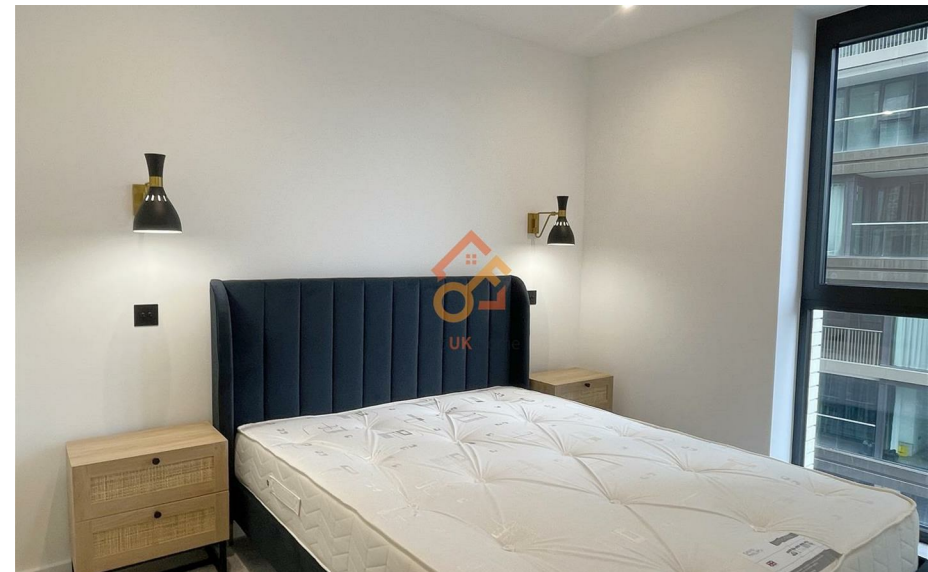
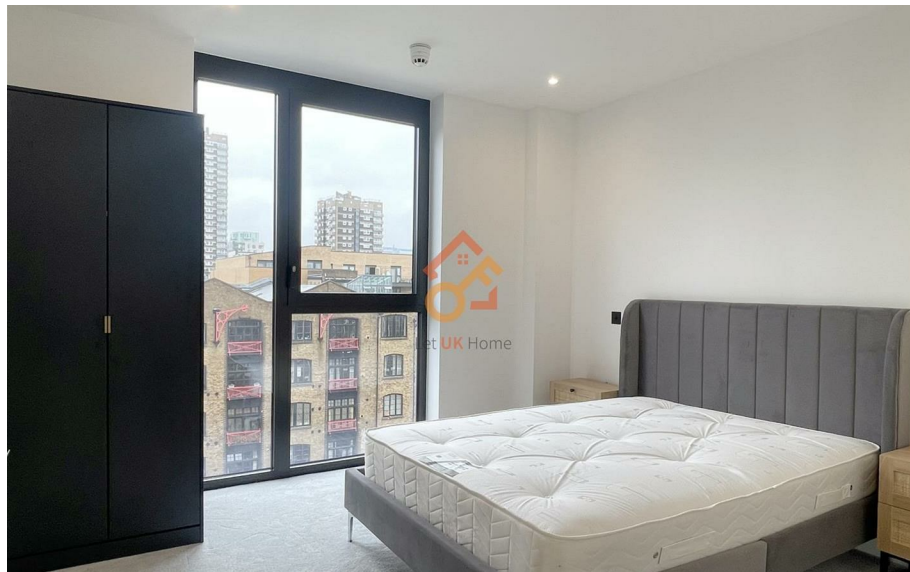
2 Merino Gardens London

£4,150 Per Month



- 6th Floor
- 24h Security
- The Gym
- Cinema & Game Room

- Concierge Service
- Swimming Pool
- Virtual Golf Suite
- EPC Rating: B





Let **UK** Home

3F 2 Eastbourne Terrace
Paddington
London
W2 6LG

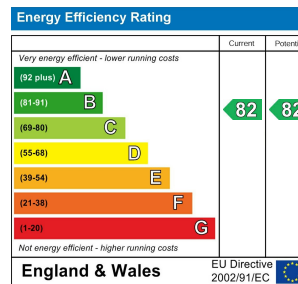
01795 358 886

info@letukhome.co.uk

Council Tax Band: F

Local Authority:

Agents Note: Whilst every care has been taken to prepare these particulars, they are for guidance purposes only. All measurements are approximate and are for general guidance purposes only and whilst every care has been taken to ensure their accuracy, they should not be relied upon and potential buyers/tenants are advised to recheck the measurements.



<https://www.letukhome.co.uk/>