

32 Hanover Drive
Winlaton
Blaydon-on-Tyne
NE21 6BD

Asking Price
£165,000



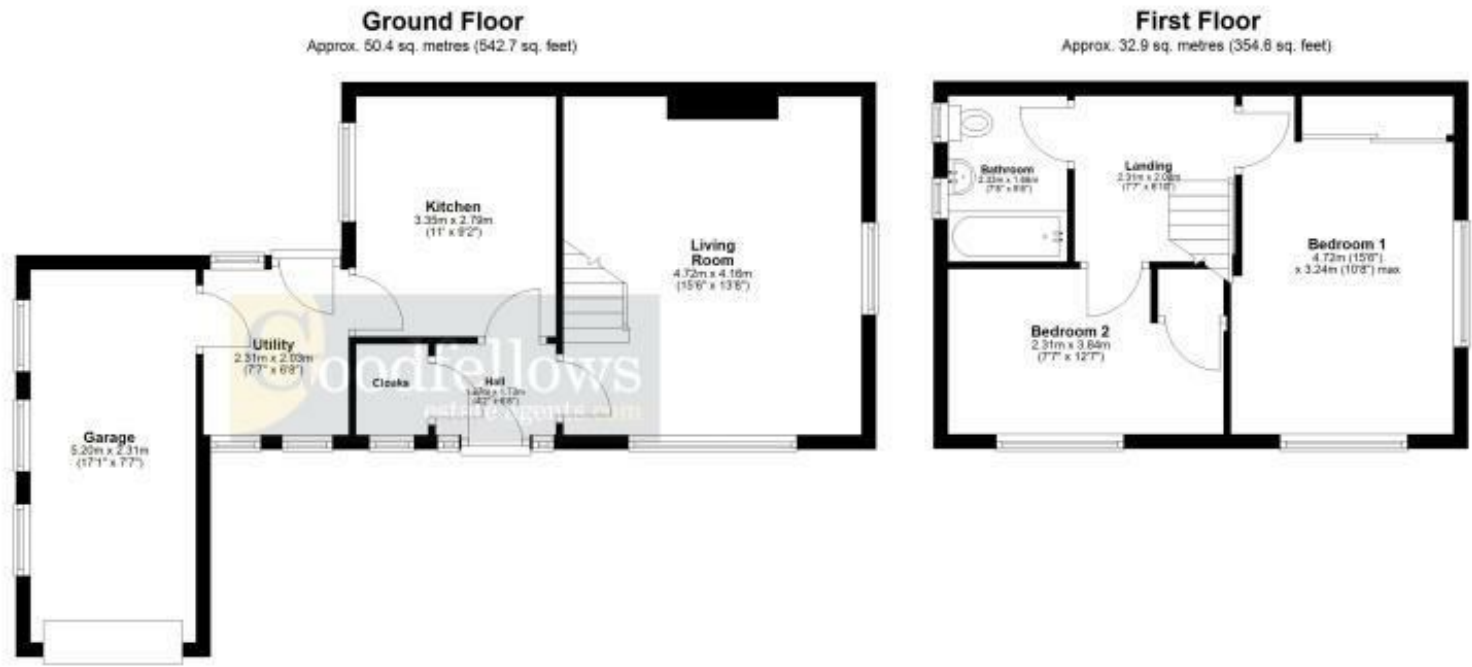
32 Hanover Drive
Winlaton
Blaydon-on-Tyne
NE21 6BD

- 2 Bedroom Semi Detached House
- No Upper Chain Involved
- Utility Area
- Gas Central Heating
- Council Tax Band B

- Corner Plot
- Driveway & Garage
- Popular Residential Area
- Sealed Unit Double Glazed Windows
- EPC D







Total area: approx. 83.4 sq. metres (897.2 sq. feet)

Whilst every attempt has been made to ensure the accuracy of the floor plan contained here, measurements of doors, windows, rooms and any other items are approximate and no responsibility is taken for any error, omission, or mis-statement. The Plan is for illustrative purposes only. Version 1

Plan produced using PlanUp.

EPC Rating: D
Council Tax Band: B

Whilst every care has been taken to prepare these particulars, they are for guidance purposes only. All measurements are approximate and whilst every care has been taken to ensure their accuracy, they should not be relied upon and potential buyers/tenants are advised to recheck the measurements. The agent has not tested any equipment, services, fixtures or fittings and makes no representation regarding their condition.

CONTACT
128 The Roman Way, West Denton,
Newcastle upon Tyne, NE5 5AD

E:
westdenton@goodfellowsestateagents.com
T: 0191 2677500

