



Hugo Road, N19

£1,250,000

A spacious three bedroom, two bathroom split-level maisonette set within an attractive Victorian home, seamlessly blending original character with contemporary design and practical living spaces.

Hugo Road is located within half a mile of Tufnell Park station (Northern line), the numerous local shops, cafés, restaurants and boutiques on Fortess Road, and within a mile of Hampstead Heath.

Features

- Three Double Bedrooms
- Two Bathrooms
- South Facing Garden
- Split-Level Maisonette
- Chain Free
- Share of Freehold



Hugo Road, N19

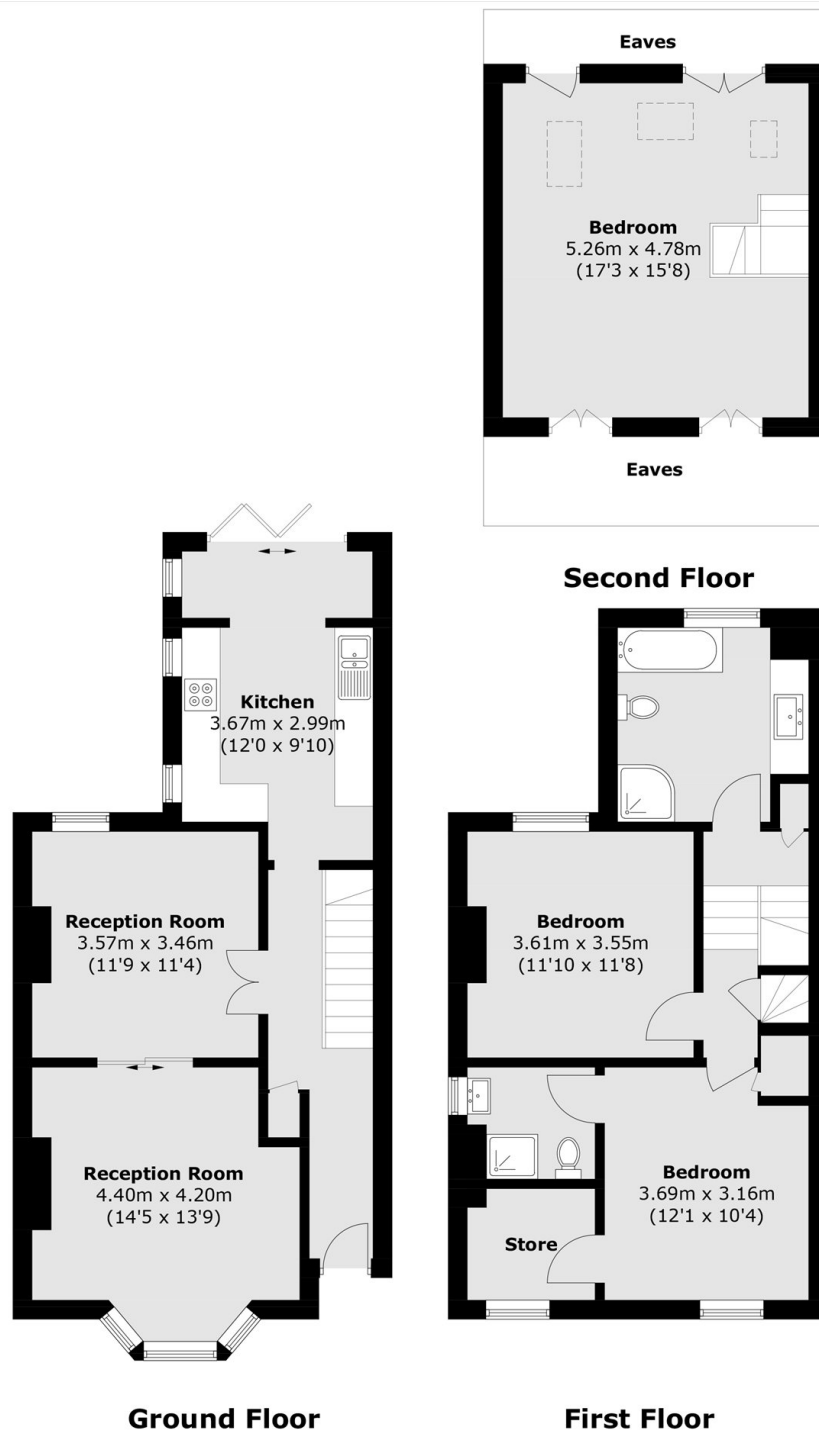
The main entrance is set at raised ground floor level, opening into a large front reception room featuring a bay window, a charming feature fireplace, and an abundance of natural light.

To the rear, a separate kitchen benefits from bi-folding doors that open onto a private south-facing garden, creating an ideal setting for indoor outdoor living. Skylights further enhance the natural light throughout this space.

The first floor has two well-proportioned double bedrooms, served by two modern family bathrooms. The top floor is dedicated to the impressive principal bedroom, offering a peaceful and private retreat.



Hugo Road, London, N19



Total area (approx.): 128.0 sq. m (1377.7 sq. ft)