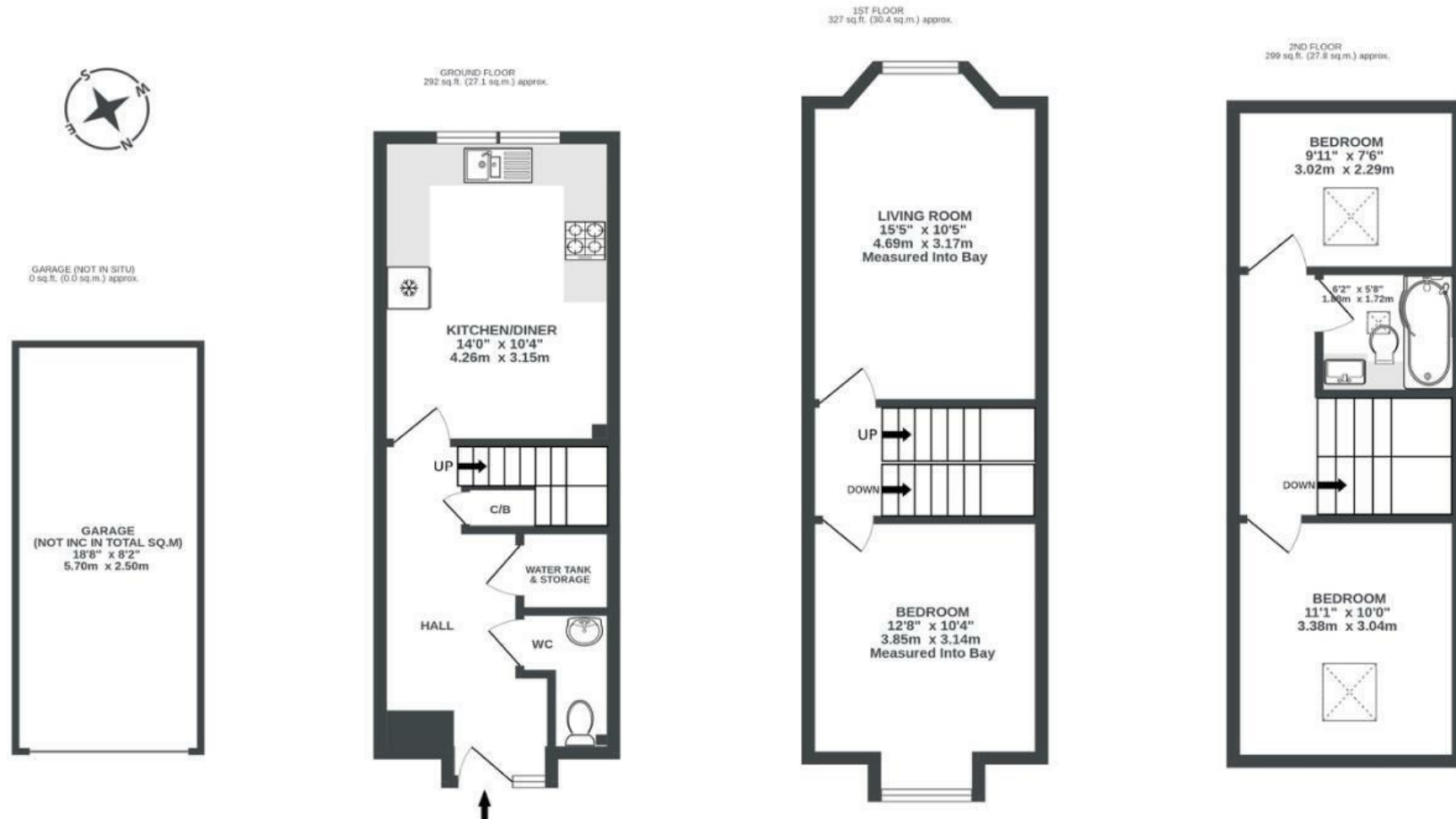


Windmill Place

WINDMILL HILL

APPROXIMATE FLOOR AREA
85.2 SQM / 917 SQFT



Illustrations are for reference purposes only, measurements are approximate, not to scale.

Boardwalk

Vivian Street

WINDMILL HILL, BRISTOL



£450,000



3 Bedrooms



BS3 4LW



2 Bathrooms

“We’ve always loved the character of a converted church, the feature window is a beautiful focal point and gives the home a real sense of history. Having a garage in this area has also been a huge bonus and is very difficult to find locally.”

