



## Cosser Street, SE1

£650,000

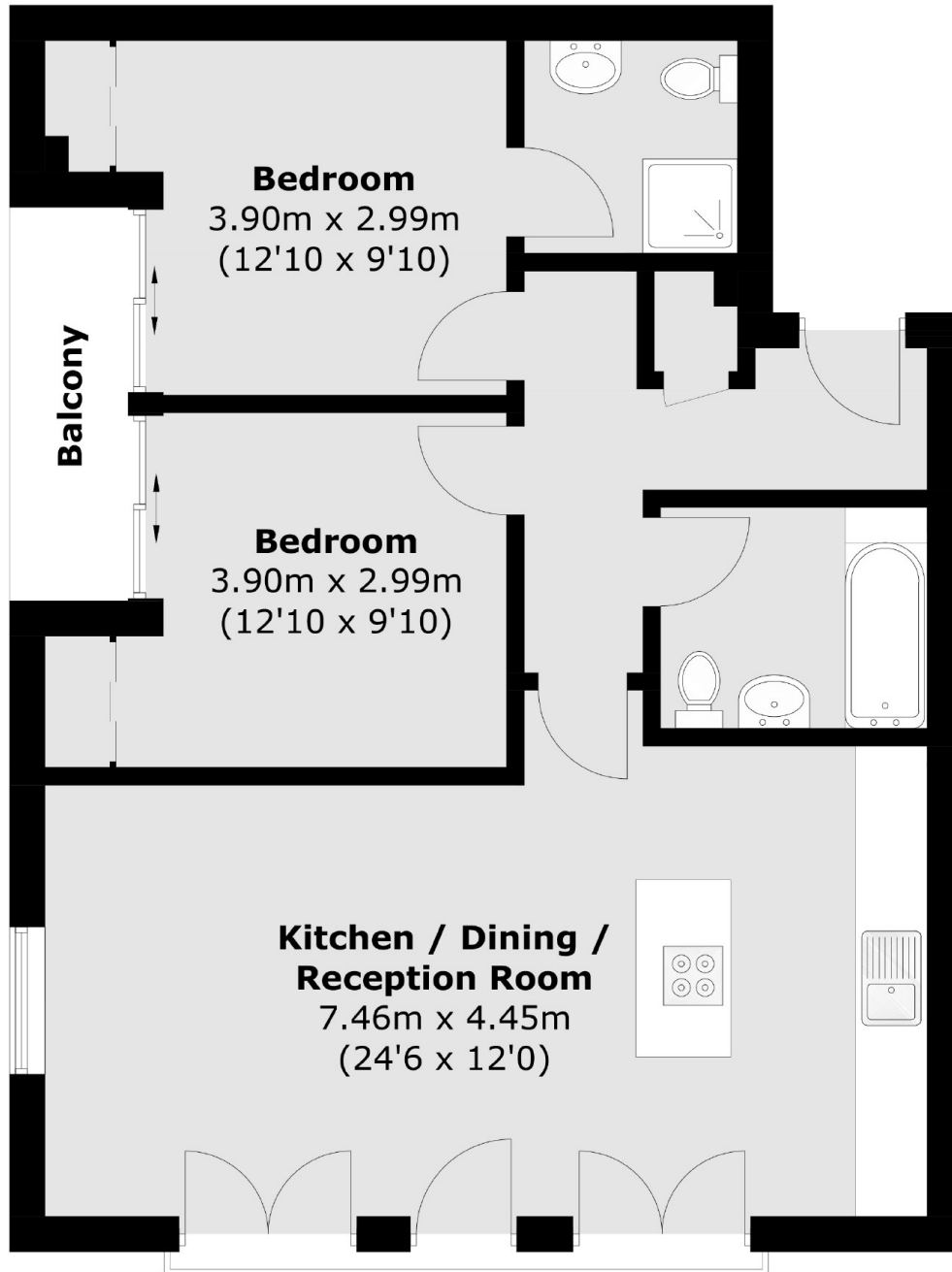
A smartly presented modern apartment with a spacious, south-facing living space, flooded with natural light, two double bedrooms, two bathrooms, ample storage and a private west-facing balcony.

Cosser Street is enviably located, moments from Waterloo and Lambeth North Stations, as well as the riverside, Imperial War Museum, Lower Marsh and the Cut. Westminster and Charing Cross are just a short walk across the river.

### Features

- Chain Free Sale
- Two Double Bedrooms
- Two Bathrooms
- Open Plan Living Space
- Large Windows
- Private Balcony

Cosser Street,  
London, SE1



Total area (approx.): 67.2 sq. m (723.3 sq. ft)  
Balcony: 3.3 sq. m (35 sq. ft)

**Dexters**

London Bridge  
54 Borough High Street  
London  
SE1 1XL  
Sales  
020 7650 5100

Energy Rating: D. We aim to make our particulars both accurate and reliable. However they are not guaranteed; nor do they form part of an offer or contract. If you require clarification on any points then please contact us, especially if you're traveling some distance to view. Please note that appliances and heating systems have not been tested and therefore no warranties can be given as to their good working order.

 **RICS** | Regulated  
Estate Agent  
and Letting Agent

dexters.co.uk